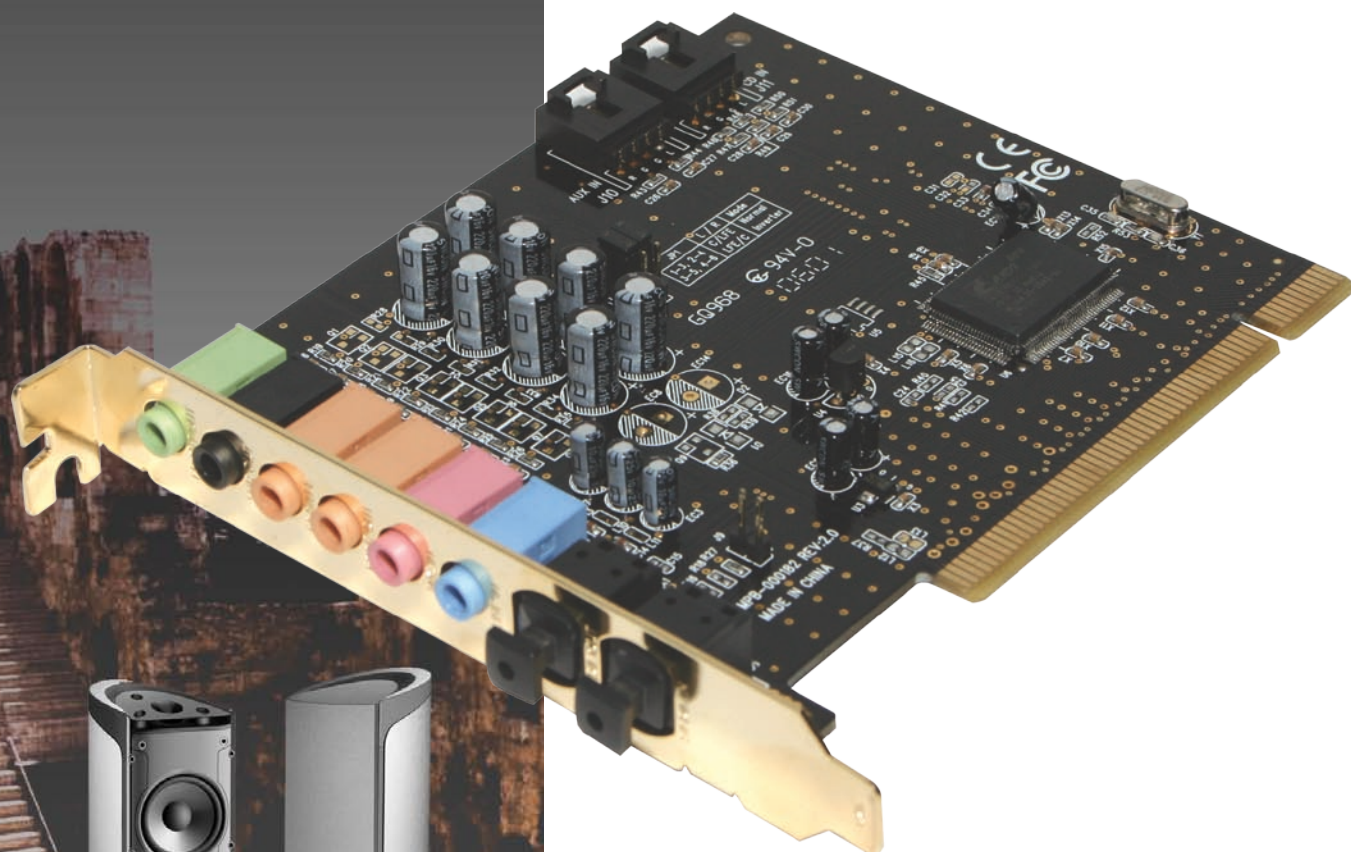


CMS-THDD



REAL-TIME DOLBY DIGITAL CREATOR
High-end HomeTheater Media PC SoundCard

DD



theatron^{DD}

DOLBY DIGITAL CREATOR



Designed for connecting Media PC with Home Cinema System

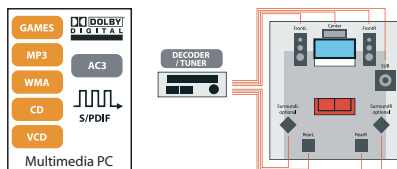
theatron^{DD}

DOLBY DIGITAL CREATOR

PC Soundcard based on C-Media
CMI8768+ Technology.



The Club 3D Theatron DD is designed for digital integration of your media PC with your Home Cinema System. Run your games or any other content in original multi channel mode, compatible with Dolby Digital format up to 7.1. Theatron DD will transfer the sound in your games, running in EAX 2.0 and Direct Sound 3D to high quality Dolby Digital. Now your high quality AV-receiver can decode the multi channel audio and bring a higher level of quality to your media center PC.



Why Theatron for HiDef Audio?

Today's Home Cinema Receivers, even the cheapest ones, use Digital to Analogue (D/A) convertors that are better than the most expensive consumer PC soundcards. But these D/A convertors only understand Dolby Digital (DD) or DTS. Today's PC Games are making use of EAX 2.0 or Direct Sound 3D. When connected digitally to a Home Cinema Receiver it will jump to stereo mode. To overcome this, you have to connect your PC soundcard analog to your Home Cinema Receiver. This means a lot of cables and poor sound quality as you cannot use the high quality D/A convertors of your Home Cinema Receiver.

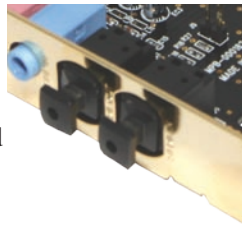
This will not happen when using Theatron. Theatron is designed to work with all Home Cinema receivers up to high-end. Club 3D Theatron always offers a digital compatible multi channel audio stream to your DD/DTS Home Cinema Receiver by transferring EAX multi channel audio to Dolby Digital format.



Dolby Digital and DTS pass through
Theatron DD will pass through all Dolby Digital and DTS formats from DVD to your Home Cinema Receiver.

High Quality Digital In/Out

Digital Optical in and out are available for easy and high quality connections between your Theatron DD and consumer electronics products.



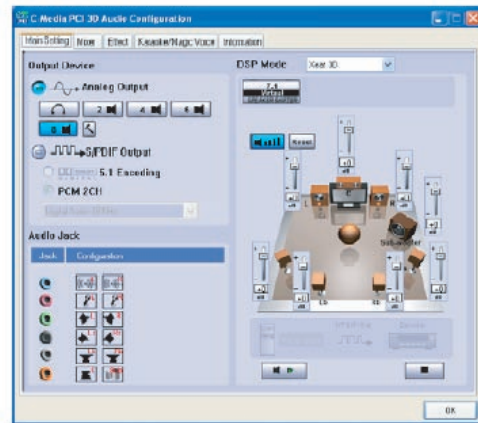
Real-Time Dolby Digital Encoding

Software RTCE (Real-Time Content Encoder) technology licensed by Dolby® Laboratory, it can supply the best digital 5.1 (AC-3) audio quality utilizing S/PDIF Link. It makes the Dolby-approved PC Media Center come true and will guarantee maximum performance and pleasure from your games and media files.



Advanced DSP

27 different Environment Emulations and surround modes to create true multi channel sound from stereo or mono sources and also includes 10-Band Equalizer with 12 preset modes.



Xear 3D Technology

Xear 3DTM sound technology empowers users to shift virtual speakers anywhere they want for optimizing the personal sound field. Virtual speakers can even deliver up-to-7.1 channel surround sounds over only 2 physical speakers or headphones.

Magic Voice Technology

Magic Voice™ functionality can transform your voice when using a microphone through the recording process to deliver amazing disguise effects for fun in many applications, such as Internet phone, messenger, online games, etc. Microphone echo and key-shifting features are well designed for karaoke application. Other sound effects like 10-band Equalizer and 27 environmental effects can enrich user's audio experience and enjoyment.



Specifications:

- RTC licensed by Dolby® Laboratory.
- Dolby certification logo.
- Analogue 7.1-channel out.
- Dolby® Digital EX, DTS® ES support.
- Support 24bit /96KHz Playback.
- Support 16bit /48K Recording.
- S/PDIF OUT Support 16bit/24bit resolution.
- S/PDIF OUT 44.1K/48K/96KHz Sample rate.
- HRTF 3D positional sound enhancement.
- Karaoke: Mic Echo, Key-shifting, Vocal cancel.
- Magic Voice: games, and messenger applications.
- Multi-speaker output to 2 / 4 / 5.1 / 7.1 speakers.
- PCI2.1 and PIC 2.2 compliant
- Microsoft® PC99 specification
- Microsoft® ACPI 1.1, APM 1.2 and PPM1.1
- HRTF-base 3D positional audio
- DirectSound™3D
- EAX v2.0 and A3D v1.0
- General MIDI (GM) compatible
- Enhanced Full Duplex

Connections:

- Internal : CD Audio In , AUX In
- Front / Rear / Center & Sub / Back surround - out
- Line-In / Mic-In
- SPDIF-In & Out (TOSLINK Optical)



Easy Installation Guide

Everyone can upgrade their computer by using the included Club 3D Easy installation guide.

System Requirements

- Intel® Pentium® or AMD™ Athlon™ or compatible
- 128MB of system memory
- Mainboard with free PCI 2.2 slot
- CD-ROM drive for software installation



XEAR 3D Audio Console

Club 3D Driver CD



OS Support

- Microsoft® Windows XP
- Microsoft® Windows 2000
- Microsoft® Windows MCE

Sales Information

- info@club-3d.nl

Item code: CMS-THDD

Disclaimer:

While we endeavor to provide the most accurate, up-to-date information available, the content on this document may be out of date or include omissions, inaccuracies or other errors. Therefore Club 3D does not accept any rights claimed on the content of this document. Please refer to a full overview of our Legacy Terms and Conditions on www.club-3d.com. All content is subject to change without prior notice. Copyright © 2006, Club 3D B.V. Rev. 1.2 01-aug-2006

WWW.CLUB-3D.COM