

Nikon 1



I AM | THE NIKON 1



I AM THE NEW ADVANCED CAMERA WITH INTERCHANGEABLE LENS

At the heart of the image





I AM | THE INTELLIGENT CAMERA

Nikon 1 Every now and then a real game changer comes along

We could have done everything the easy way and used existing technology. But we decided to go back to the drawing board and re-imagine how cameras are designed.

The result is Nikon 1 — an intelligent camera system crafted to bring new levels of speed, simplicity and enjoyment to the way you capture your world.

Astonishingly fast, stunningly compact and amazingly precise, both of our first-generation Nikon 1 cameras put the power to shoot impressive stills and movies right into the palm of your hand.

Exceptionally intuitive to use, they offer fully automatic operation.

Equipped with the fastest autofocus system¹ in the world and a high-speed image processor, they ensure the best possible shots in any situation.

Built to let you shoot images you would never have believed possible, they can start recording images before you fully press the shutter button and continue after you've clicked.

And we didn't just focus on the new. In fact, when it came to crafting the cameras' 1 mount system, we drew on more than 50 years of expertise.

The 1 mount is what allows you to use the Nikon 1 system's range of interchangeable 1 NIKKOR lenses. Engineered to ensure each lens communicates perfectly with the camera, it enables still image and movie recording without compromise.

¹ The world's shortest shooting time lag (as determined by Nikon performance tests). Measured when using the single-point AF mode and the shortest focal length of a standard zoom lens (1 NIKKOR VR 10-30mm f/3.5-5.6). As of August 5, 2011.



Table of contents

The Nikon 1 interchangeable lens camera system: I AM THE INTELLIGENT CAMERA	2
Meet the engineers behind Nikon 1	6
Ease of use: Simplicity defined	8
Groundbreaking automatic shooting modes	9
The Nikon 1 cameras	10
Nikon 1 V1: Portable power, incredible speed	13
Nikon 1 J1: Always ready for you	14
Image quality: All new CX-format CMOS image sensor and world's fastest autofocus	15
Image processor — EXPEED 3: Fast just got faster	16
Motion Snapshot: Bring your stills to life in a click	17
Smart Photo Selector: One shot - five great images to choose from	18
Continuous shooting mode: Action at 60 frames per second	19
Advanced movie mode: Made with movie-making in mind	20
1 NIKKOR lenses	21
1 NIKKOR VR 10-30mm f/3.5-5.6: Moments just the way they were	22
1 NIKKOR VR 30-110mm f/3.8-5.6: Zoom in close	23
1 NIKKOR 10mm f/2.8: Go wide and stay sharp	24
1 NIKKOR VR 10-100mm f/4.5-5.6 PD-ZOOM: Movie shooter	25
Nikon 1 System Accessories	26
Mount adapter: A world of possibilities	28
Speedlight flash: The right light	29
GPS unit: Tag your images	29
Nikon 1 Kits: Kit yourself out	30
Accessories overview	31
1 NIKKOR technical specifications	
Software requirements	
Nikon 1 V1 technical specifications	
Nikon 1 J1 technical specifications	

Meet the engineers behind Nikon 1

We spoke to the engineers who created our new camera system and asked them what Nikon 1 means to them. This is what they had to say...

“If someone takes a surprisingly good photo, they’re more likely to enjoy it and share it. Which will inspire others to take, enjoy and share more photos. That’s the domino effect we wish to create with this camera.”

Masayo Iida
(Short Movie Creator — Software Project Planning)

“To create the 1 NIKKOR lenses we had to imagine what the camera system of the future should be. In other words – we had to start from scratch.”

Keiji Moriyama
(1 NIKKOR Lens Development)

“I think Nikon 1 will change the way we think about photos and movies. It’s so easy and enjoyable, it will become part of our everyday lives.”

Akira Nojima
(Nikon 1 Product Design)

“Nikon 1 cameras are so incredibly portable that carrying two lenses is no problem. Also the shutter sound is silenced, so it’s perfect for any formal situation. I would definitely use this camera to take photos of my family and for my railway photography hobby.”

Noriyoshi Tachikawa
(CX-format CMOS Sensor Development)

“Our biggest challenge was how to incorporate such a powerful engine and sensor into the sleek, minimalist design...but we did it.”

Shigeki Yagi
(Nikon 1 V1 Mechanical Design Architect)

“Good photos boil down to composition, timing and the correct settings. Nikon 1 cameras do it all. They’ll help people enjoy photography because every photo will turn out just as they’d hoped.”

Hideo Hoshuyama
(Image Processing and Quality Development)

“I would put the speed to good use by capturing the changing expressions on my children’s faces as they play.”

Kazuharu Imafuji
(EXPEED Image Processing Engine Development)

“Nikon 1 redefines photography. It introduces the concept of manipulating not just light – but also time. With a Nikon 1 you can actually go back in time and see those few moments before, or after, a photograph was taken.”

Masahiko Inoue
(Product Planning)

“I think Nikon 1 is a camera capable of new things, offered by no other camera in the world: one of those things is Motion Snapshot.”

Naoki Kitaoka
(Development and Design Concept)

“We wanted people to be able to capture the story around a moment, without complicating the process of taking a photo. Motion Snapshot makes that possible.”

Takashi Kuriyama
(Motion Snapshot Development)

“I flatter myself in thinking that we created particularly pleasing hues for the red and silver models. I like the red model best. Doesn’t it have a lovely feel?”

Seiji Suzuki
(Nikon 1 Production Technology – 1 NIKKOR VR 10-30mm lens)

“This is the world’s fastest autofocus system. People will be able to take shots they didn’t believe were possible.”

Hiroaki Takahara
(Hybrid AF System Development)

“I’m fascinated by the Smart Photo Selector. I helped develop the algorithms for it, so naturally I was thrilled when it was installed. As a photographer myself, I can’t wait to take continuous photos of my two ten-year-olds. I look forward to not missing a shot.”

Akihiko Takahashi
(Imaging/Image Quality Development)

“Nikon 1 has completely changed my view of cinematography – it’s so easy to shoot moving targets that used to vanish from the frame.”

Koshi Yoshibe
(Mechanical Design for 1 NIKKOR Lenses)





Simplicity defined

With a Nikon 1 in your hand, capturing great images will become second nature in no time at all.

Ergonomically designed for comfortable handling and intuitive operation, these intelligent, fully automatic cameras let you shoot any scene with ease.

Their sleek bodies boast minimal buttons, so it's easy to become familiar with which ones to use and when.

The clear menus feature large, easy-to-understand icons that make it simple to navigate between different functions. A conveniently placed mode dial on the back of each camera offers instant access to a range of clever automatic shooting modes.

Groundbreaking automatic shooting modes

Nikon 1 shooting modes have been developed to offer results that will amaze you – and anyone who sees them.

Harnessing the camera's phenomenal processing speed and ability to capture images before, and after, you fully press the shutter button, these innovative shooting modes can catch moments you would not normally be able to catch.

Motion Snapshot (MSS) brings a photo to life in just one click and Smart Photo Selector (SPS) captures the perfect moment in any scene.

Still image mode will make you a master of movement as you switch to shooting sharp shots of the action at up to 60 frames per second².

Movie mode opens up a host of advanced movie functions, including the chance to take a high-resolution photo while filming a movie³.

² With default settings, you can shoot at a high speed of 10 fps by pressing the shutter-release button down all the way. While shooting, the camera will focus on the subject within the AF area in the center of the screen. Face-priority AF is not available. You can adjust the shooting speed to 30 fps and 60 fps by changing the camera settings in the menu.
³ Full-resolution images in movie mode (aspect ratio 16:9) 3,840 x 2,160 (1,080/60i).

Nikon 1 V1

Portable power, incredible speed

If you've been waiting for a brand-new photographic experience – this is it. Built from the ground up to offer still image and movie recording without compromise, the incredibly portable Nikon 1 V1 will propel your photography forward in ways you could never have imagined.

With the fastest autofocus system (AF) in the world,¹ unique shooting modes, brilliant low-light performance and a high-resolution electronic viewfinder, it boasts all you need to capture standout stills and movies.

Quick enough to capture the unexpected, the groundbreaking super high-speed AF system instantly switches between Phase-Detection AF and Contrast Detect AF to deliver razor-sharp results in any situation. Phase-Detection AF, which focuses accurately and quickly on movement, is available during movie recording.

The high-speed image processor enables a quick shot-to-shot turnaround and powers shooting speeds of up to 60 fps.²

The camera's clever shooting modes let you shoot scenes as never before and the electronic viewfinder offers 100% frame coverage, even when filming.

Every one of the compact 1 NIKKOR lenses boasts high-quality optics and is optimized for movie recording. When you want to use your favorite NIKKOR F mount lens,⁴ you can do so via the mount adapter that attaches to the camera's 1 mount, and the camera's multi-accessory port gives you the freedom to expand your system further.

Available in an iconic-looking black or white body, the Nikon 1 V1 may be small but it's a veritable powerhouse of imaging innovation.

I AM
CHANGING EVERYTHING



⁴ For accurate information about compatibility with F-mount NIKKOR lenses, please refer to the manual.

I AM ONE CLICK AHEAD

Nikon 1 J1 Always ready for you

Busy lives filled with exciting social engagements, or precious opportunities to record time spent with loved ones, demand a camera that can keep up.

Designed to think fast and act even faster, the intelligent Nikon 1 J1 easily puts you a click ahead of the action so you'll always be able to catch the moments you want.

Equipped with everything you need to capture great photos and movies, this ultra-portable, simple-to-operate automatic camera enables stunningly effortless shooting in any situation. No matter where you might be or what you might be doing, it ensures the best possible results every time.

With the quickest autofocus system in the world¹, it can capture superb images of split-second moments, even if your children, friends or pets are dashing about. Whether you're shooting first thing in the morning, under the midday sun, or after dark, the large image sensor delivers consistently brilliant results and a built-in pop-up flash offers extra light when you need it.

The menus are easy to read and simple to navigate. And the easily reachable mode dial on the back of the camera offers quick access to the camera's shooting modes, which all make it simple to capture images you never would have believed possible.

Available in a range of colors with compact 1 NIKKOR lenses to match, the simple, sharp and smart Nikon 1 J1 ensures you'll always be ready to capture the beauty of life lived on the go.





All-new image sensor with the fastest autofocus in the world¹

Whether you want to shoot fast movement, slow movement or no movement, Nikon's all-new CX-format CMOS image sensor ensures you'll always capture superb high-resolution stills and movies.

Developed to offer the ideal balance between speed, light sensitivity, resolution and depth-of-field, you can shoot clearer action shots, better images in low light, and easily soften backgrounds to make your subject stand out more.

Equipped with a revolutionary super high-speed autofocus (AF) system that boasts the most focus points in the world,⁵ your subject will always be in focus.

If you're shooting shiny or moving subjects, the sensor will switch to Phase-Detection AF. If your subject is stationary, or poorly lit, it will opt for Contrast Detect AF. And whichever system it chooses, the quick shot-to-shot turnaround gives you the freedom to shoot moments as they unfold without worrying about a thing.

⁵ You can choose the world's most focus points (73) when using the single-point AF mode in your user settings. When using auto-area AF, the camera selects from 41 focus areas and focuses automatically.

EXPEED 3: Fast just got faster

To be as fast as a Nikon 1 camera is, you need an engine that can handle speed. EXPEED 3 is a super-fast image processor engineered to deliver unparalleled levels of speed and performance in any situation.

Equipped with two powerful engines that can process images at an incredible 600 megapixels a second, it enables a host of innovative functions. You can snap a full-resolution photo while recording a movie³ and shoot full-resolution stills at up to 60 frames per second.²

Fully capable of managing performance without sacrificing quality, it offers superior noise reduction, so you can enjoy clean, finely detailed images. And because it does everything so fast, it supports high-speed SD memory cards that quickly save every fantastic shot you take.



Motion Snapshot: Bring your stills to life in a click

Every photo is unique, but not many come to life right in front of your eyes. A fantastic way to capture a moment in time as never before, Nikon's unique Motion Snapshot makes your photos come alive. Easily accessed via the mode dial, it all happens in just one click.

Using its ability to capture images before you fully press the shutter button, the camera simultaneously records a one-second slow-motion movie and a still image. As soon as you've taken your shot it instantly combines the two to create a 'living image'.

From the way someone might toss their head before they smile, or someone else might leave the frame before you click, fleeting movements and emotions are captured in a snap.

A whole new experience, a Motion Snapshot keeps the story of a moment alive in a way that will delight and amaze you every time you look at it.

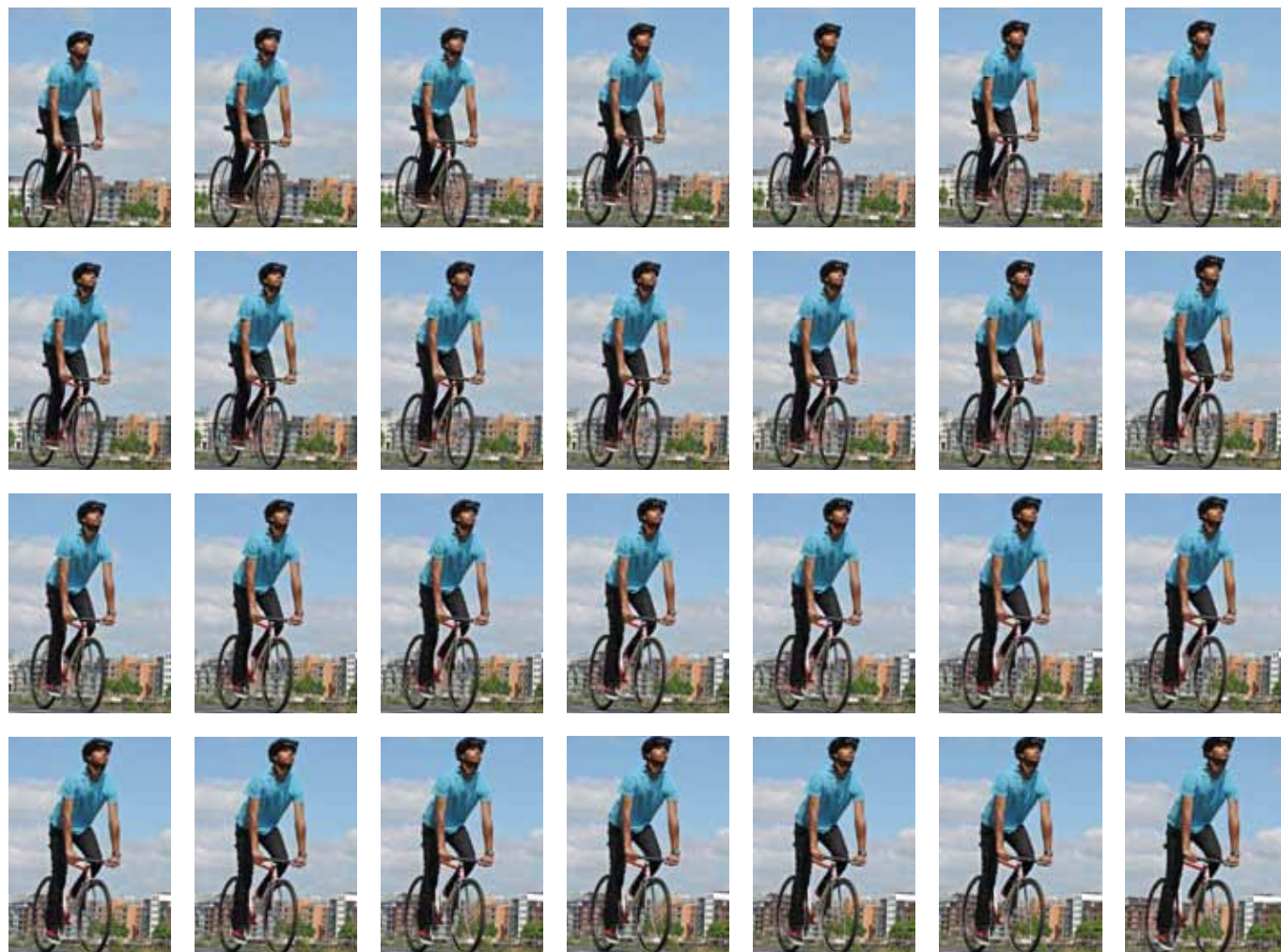


Smart Photo Selector: One shot — five great images to choose from

The most amazing things can happen at any moment, and thanks to Nikon's groundbreaking Smart Photo Selector (SPS) you'll always capture the moment you want.

Harnessing the camera's pre-post capture technology, Smart Photo Selector flies into action as soon as you press the shutter button. It begins to capture images before you even take the shot, and continues after you're done, ultimately shooting up to 20 high-resolution images in quick succession.

The best shot is instantly displayed on the monitor, and four more are saved for you to choose from. The camera recommends shots based on factors such as facial expression, composition and focus so you'll never again miss a smiling face, accidentally cut off someone's head or end up with a blurred image.



Continuous shooting: Action at 60 frames per second²

When it comes to capturing smooth shots of fast action, you need unparalleled levels of speed and precision. With the world's fastest continuous shot,⁶ Nikon 1 cameras have outdone themselves.

Engineered to deliver full-resolution images at up to 60 frames per second,² practically no movement will be too fast to capture. And when you want to focus tightly on one subject, the camera can automatically track the subject you've chosen and still capture full-resolution images at 10 frames per second.

Whether you want to capture kids or pets as they dash about having fun, or your friends as they whizz about the city on bikes, a Nikon 1 camera will bring a new dimension of speed to every scene you shoot.

⁶ World's fastest continuous shooting: max. 10 fps in subject tracking AF mode (when the aperture value is f/5.6 or smaller with the shutter speed 1/60 or faster) and max. 60 fps in full high definition, fixed-focus mode. As of September 5, 2011. As determined by Nikon performance tests.



Advanced movie mode: Made with movie-making in mind

Whether you're recording a family event or an arty film, nothing beats the joy of shooting a film on a camera that can deliver stunning Full HD movies. With all functions optimized to capture incredibly clear video footage, Nikon 1 cameras deliver superb high-resolution results.

You can take a full-resolution photo while filming,³ without interrupting recording. And you can shoot footage in extreme slow motion for dramatic effect.

Action scenes are easy because Phase-Detection AF, which is quick to focus on moving subjects, is available during recording. Thanks to the large image sensor and high ISO sensitivity, you can shoot clear footage with low noise, even in low light, and

easily soften backgrounds to make your subjects stand out.

And whatever you're filming, the range of compatible 1 NIKKOR lenses opens up a world of creative possibilities.



1 NIKKOR VR 10-30mm f/3.5-5.6

Moments just the way they were

Some experiences deserve to be preserved just the way you remember them, and the 1 NIKKOR 3x zoom is an incredibly compact standard zoom lens that gives you the freedom to do just that.

A great all-rounder with wide-angle capability, its 10-30mm focal range (35mm equivalent: 27-81mm) can cover a variety of scenes. A truly useful lens to have within easy reach wherever you go, its compact design includes a button that lets you retract the lens whenever you don't want to use it.

The built-in Vibration Reduction unit ensures steady stills and movies, and Nikon's Stepping Motor offers super-quiet autofocus performance — especially handy when filming.



7 Only available as a kit.

1 NIKKOR VR 30-110mm f/3.8-5.6

Zoom in close

The versatile 1 NIKKOR VR 30-110mm lens (35mm equivalent: 81-297mm) is a truly portable telephoto zoom lens that makes it easy to get close to distant subjects.

The perfect lens to take with you on a city break or a day out shooting, it lets you get close to distant subjects with ease, and it's a great way to call attention to someone's face rather than the background when shooting a portrait.

Whether you want to capture a photo or a movie, the built-in Vibration Reduction unit ensures steady shots, and Nikon's Stepping Motor offers super-quiet autofocus performance — especially handy when filming.

Incredibly portable, it is equipped with a retractable lens mechanism, so you can easily retract the lens whenever you don't want to use it.





1 NIKKOR 10mm f/2.8

Go wide and stay sharp

You never quite know when the chance to capture a great shot will come along, but this 1 NIKKOR wide-angle lens is so slim that you can easily take it with you in case one does.

Offering a 10mm (35mm equivalent: 27mm) fixed focal length, it's ideal for making interiors and landscapes look even vaster, or when shooting in cramped spaces like restaurants.

Its thin yet solid construction makes it especially easy to take with you wherever you go, and you can use it to experiment with wide-angle shots when shooting movies too.

The smooth aperture adjustment lets you move easily from sharp to soft backgrounds to make your subject stand out more, even when shooting a movie. Nikon's Stepping Motor delivers super-quiet autofocus performance, which is handy when filming.



1 NIKKOR VR 10-100mm f/4.5-5.6 PD-ZOOM

Movie shooter

The 1 NIKKOR 10x power-drive zoom is a gift to movie makers. Designed to let you film cinematic looking scenes with ease, its 10-100mm zoom range (35mm equivalent: 27-270mm) lets you capture movies in superb clarity.

Whether you want to heighten tension or create a sense of calm, the convenient power-drive zoom switch lets you zoom quickly, or slowly, towards, or away from, subjects. The built-in Vibration Reduction unit will keep all your shots steady. You can change the aperture for sharp or soft backgrounds, and the lens' Stepping and Voice Coil Motors offer super-quiet autofocus performance.

With a retractable mechanism that extends the lens out or folds it away when you power the camera on or off, this lens is as easy to carry around on a movie set as anywhere else.



Designed to work seamlessly with your camera, the Nikon 1 family of accessories help you get the most out of your shooting.



Mount adapter A world of possibilities

The best lenses lead to better images, and the FT1 mount adapter puts a whole host of world-class NIKKOR lenses at your disposal.⁴ From extreme wide-angles to super-telephoto lenses and more, the wider NIKKOR range offers limitless possibilities to match a lens to your shooting situation or experiment with new creative ideas.

Any NIKKOR lens you use will attach easily and securely to the F-mount adapter, and if you use AF-S and AF-I NIKKOR lenses you can still make full use of the incredible Nikon 1 autofocus system.⁴

The right light

The incredibly compact SB-N5 Speedlight flash is the ideal piece of kit to have at hand if you want to control the direction of light. Easily attached to the multi-accessory port on the Nikon 1 V1 camera,⁸ it can be rotated vertically or horizontally to bounce the flash off the ceiling or walls for natural-looking images with soft shadow.

Powered via the camera, it needs no batteries and boasts a capture illuminator LED light on the front of the unit to ensure steady light when using Motion Snapshot or Smart Photo Selector in the dark.



Tag your images

If you like to travel with your Nikon 1 V1, the tiny GP-N100 GPS unit is a great way to make sure you can always tag your images to the right location.⁸

Designed to be especially compact, it attaches easily to the camera and automatically records location information such as latitude, longitude, altitude and time as 'geotags' in the image data (EXIF). It even boasts an A-GPS function for rapid start up.



⁸ Only compatible with the Nikon 1 V1.

Kit yourself out

With four different Nikon 1 kits to choose from, there's every chance for you to select the perfect combination of camera and 1 NIKKOR lenses.

A perfect 'everyday' kit, the extremely compact and lightweight Zoom lens kit with the all-round **1 NIKKOR VR 10-30mm f/3.5-5.6** lens is exceptionally easy to carry, and easy to use. The 3x zoom lens with wide-angle capability is designed to handle a variety of scenes, so you can make the most of every shooting opportunity.

The Double Zoom Kit includes the lightweight **1 NIKKOR VR 10-30mm f/3.5-5.6** 3x standard zoom lens and the compact **1 NIKKOR VR 30-110mm f/3.8-5.6** telephoto zoom lens. A great all-round kit, the lenses complement each other perfectly to let you capture everything from daily snapshots to intimate portraits or distant subjects with ease. Both lenses are optimized for movie recording and boast Vibration Reduction for sharp stills and steady movies.


The ultra-portable Double Lens Kit includes the incredibly thin **1 NIKKOR 10mm f/2.8** wide-angle lens as well as the compact, all-round **1 NIKKOR VR 10-30mm f/3.5-5.6** 3x zoom lens. If you're out and about with friends or family and not quite sure what to expect, this kit ensures you have a great wide-angle lens for landscapes or group shots, and a zoom lens for snapshots on the go.

When you want to pack light, the Slim Lens Kit with the ultra-thin **1 NIKKOR 10mm f/2.8** wide-angle lens is the kit to take. The lens is ideal for making landscapes look even vaster or when shooting in cramped spaces like restaurants, and offers the perfect chance to get creative with dramatic wide angle shots when shooting movies.


Nikon 1 J1 kits are available in black, white, red, pink⁹ and silver. Nikon 1 V1 kits come in iconic black or white.

I AM | MORE THAN ONE



 Nikon1 V1 kits come in iconic black or white.
⁹ Only available as Double Zoom Kit.



Nikon1 J1 kits are available in pink, red, silver, black and white. 

Accessories overview

● Standard

○ Optional

Available colors

Nikon 1 J1

Nikon 1 V1

1 NIKKOR 10mm f/2.8

1 NIKKOR VR 10-30mm f/3.5-5.6

1 NIKKOR VR 30-110mm f/3.8-5.6

1 NIKKOR VR 10-100mm F/4.5-5.6 PD-ZOOM

Rechargeable Li-ion Battery EN-EL20		●					
Rechargeable Li-ion Battery EN-EL15			●				
Battery Charger MH-27		●					
Battery Charger MH-25			●				
USB Cable UC-E15		●					
USB Cable UC-E6			●				
Audio Video Cable EG-CP14			●				
Strap AN-N1000		●	●				
Body Cap BF-N1000		●	●				
Multi Accessory Port Cover BS-N1000	■□		●				
1 NIKKOR VR 10-100mm Lens Hood HB-N102							●
1 NIKKOR VR 30-110mm Lens Hood HB-N103					●		
ViewNX 2/Short Movie Creator CD-ROM (bundled software)		●	●				
Tripod Mounting Spacer TA-N100		○	○				○
Mount Adapter FT1	■□■□■□■□	○	○				
Nikon 1 J1 Body Case CB-N2000	■□■□■□■□	○			○		
Nikon 1 J1 Body Case Set: Body Case + Front Cover (1 NIKKOR VR 10-30mm) CB-N2000	■□■□■□■□	○		○			
Nikon 1 J1 Body Case Set: Body Case + Front Cover (1 NIKKOR 10mm) CB-N2000	■□■□■□■□	○		○			
Nikon 1 V1 Body Case CB-N1000	■□		○				
Nikon 1 V1 Body Case Set: Body Case + Front Cover (1 NIKKOR VR 10-30mm) CB-N1000	■□		○		○		
Nikon 1 V1 Body Case Set: Body Case + Front Cover (1 NIKKOR 10mm) CB-N1000	■□		○	○			
Leather Neck Strap AN-N2000	■□■□■□■□	○	○				
Leather Hand Strap AH-N1000	■□■□■□■□	○	○				
Wrapping Cloth CF-N3000	■□■□■□■□	○	○	○	○	○	○
Stereo Microphone ME-1			○				
Nikon 1 J1 Grip GR-N2000	■□	○					
Nikon 1 V1 Grip GR-N1000	■□		○				
Multi Accessory Port Adapter AS-N1000			○				
Power Connector EP-5C		○					
Power Connector EP-5B			○				
AC Adapter EH-5b		○	○				
Remote Control ML-L3		○	○				
Speedlight SB-N5			○				
GPS Unit GP-N100	■□		○				
1 NIKKOR VR 10-30mm Lens Hood HB-N101	■□				○		
1 NIKKOR 10mm Lens Hood HN-N101				○			
1 NIKKOR 10mm Lens Hood Cap HC-N101				○			
Lens Case CL-N101	■□■□			○	○	○	
Lens Case CL-N102							○

1 NIKKOR technical specifications

	1 NIKKOR VR 10-30mm f/3.5-5.6	1 NIKKOR VR 30-110mm f/3.8-5.6	1 NIKKOR VR 10-100mm f/4.5-5.6 PD-ZOOM	1 NIKKOR 10mm f/2.8
Lens construction (groups/elements)	9/12	12/18	14/21	5/6
Angle of view	77°-29°40'	29°40'-8°20'	77°-9°10'	77°
Number of diaphragm	7	7	7	7
Minimum f-stop	16	16	16	11
Minimum focus distance (m/ft.)	0.2/0.7	1.0/3.3	10mm focal length: 0.3 (1) 100mm focal length: 0.85 (2.8)	0.2/0.7
Maximum reproduction ratio (35mm equivalent)	0.21 (0.57)	0.1 (0.28)	0.12 (0.34)	0.06 (0.16)
Weight (g/oz.)	Approx. 115/4.1	Approx. 180/6.3	Approx. 530/1lb2.7oz.	Approx. 77/2.8
Dia. x length (distance from camera lens mount flange) (mm)	Approx. 57.5 × 42 when lens is retracted	Approx. 60 × 61 when lens is retracted	Approx. 77 × 95 when lens is retracted	Approx. 55.5 × 22
Filter Attachment size (mm)	40.5	40.5	72	40.5
Lens cap type	Snap-on	Snap-on	Snap-on	Snap-on
Lens hood	HB-N101 (optional)	HB-N103 (provided)	HB-N102 (provided)	HN-N101 (optional)
Lens case	CL-N101 (optional)	CL-N101 (optional)	CL-N102 (optional)	CL-N101 (optional)
Lens hood cap				HC-N101 (optional)

NOTE: Lens hood names indicate type: HN for Screw-in, HR for Rubber Screw-in, HK for Slip-on, HS for Snap-on and HB for Bayonet.
Nikon reserves the right to change the specifications of the hardware described in this brochure at any time and without prior notice.

Software requirements

	System requirements Short Movie Creator	System requirements ViewNX 2	System requirements Short Movie Creator	System requirements ViewNX 2
	Windows		Mac OS	
CPU	2 GHz Intel Core 2 Duo or better	- Photos/JPEG movies: Intel Celeron, Pentium 4 or Core series (1.6 GHz or better) - H.264 movies (playback): 3.0 GHz or better Pentium D - H.264 movies (editing): 2.6 GHz or better Core 2 Duo	2 GHz Intel Core 2 Duo or better	- Photos/JPEG movies: PowerPC G4 (1 GHz or better), G5, Intel Core, or Xeon series - H.264 movies (playback): PowerPC G5 Dual or Core Duo, 2 GHz or better - H.264 movies (editing): 2.6 GHz or better Core 2 Duo
OS	Pre-installed versions of Windows 7 Home Basic/Home Premium/Profes- sional/Enterprise/Ultimate (Service Pack 1), Windows Vista Home Basic/ Home Premium/Business/Enterprise/ Ultimate (Service Pack 2), or Windows XP Home Edition/Professional (Service Pack 3). All installed programs run as 32-bit applications in 64-bit editions of Windows 7 and Windows Vista.	Pre-installed versions of Windows 7 Home Basic/Home Premium/Profes- sional/Enterprise/Ultimate (Service Pack 1), Windows Vista Home Basic/ Home Premium/Business/Enterprise/ Ultimate (Service Pack 2), or Windows XP Home Edition/Professional (Service Pack 3). All installed programs run as 32-bit applications in 64-bit editions of Windows 7 and Windows Vista.	Mac OS X version 10.5.8 or 10.6.7	Mac OS X version 10.5.8 or 10.6.7
RAM	1.5 GB or more with at least 128 MB of video RAM (2 GB or more with at least 256 MB of video RAM recommended for creating HD movies)	- Windows 7/Windows Vista: 1 GB or more (2 GB or more recommended) - Windows XP: 512 MB or more (2 GB or more recommended)	1 GB or more	512 MB or more (2 GB or more recommended)
Hard-disk space	A minimum of 500 MB available on the startup disk (1 GB or more recommended)	A minimum of 500 MB available on the startup disk (1 GB or more recommended)	A minimum of 500 MB available on the startup disk (1 GB or more recommended)	A minimum of 500 MB available on the startup disk (1 GB or more recommended)
Monitor	- Resolution: 1024×768 pixels (XGA) or more - Color: 32-bit color (True Color) or more	- Resolution: 1024×768 pixels (XGA) or more (1280×1024 pixels (SXGA) or more recommended) - Color: 24-bit color (True Color) or more	- Resolution: 1024×768 pixels (XGA) or more - Color: 24-bit color (millions of colors) or more	- Resolution: 1024×768 pixels (XGA) or more (1280×1024 pixels (SXGA) or more recommended) - Color: 24-bit color (millions of colors) or more
Other	DirectX 9 or later and OpenGL 1.4 or later on the startup disk			
	If your system does not meet the above requirements, only ViewNX 2 will be installed.	ViewNX 2 is required to view Motion Snapshots on a computer.	If your system does not meet the above requirements, only ViewNX 2 will be installed.	ViewNX 2 is required to view Motion Snapshots on a computer.

Nikon 1 J1 Specifications



I AM | THE NIKON 1

Specifications and equipment are subject to change without any notice or obligation on the part of the manufacturer. September 2011 © 2011 Nikon Corporation



WARNING

**TO ENSURE CORRECT USAGE, READ MANUALS CAREFULLY BEFORE USING YOUR EQUIPMENT.
SOME DOCUMENTATION IS SUPPLIED ON CD-ROM ONLY.**

Visit the Nikon Europe website at: www.europe-nikon.com



Nikon U.K. Ltd. Nikon House, 380 Richmond Road, Kingston upon Thames, Surrey KT2 5PR U.K. www.nikon.co.uk
Foto Distributors Nikon House, 68 Kyalami Boulevard, Kyalami Business Park, Midrand, 1684, Republic of South Africa www.nikon.co.za
NIKON CORPORATION Shin-Yurakucho Bldg., 12-1, Yurakucho 1-chome, Chiyoda-ku, Tokyo 100-8331, Japan www.nikon.com