

SP AF 17-50mm F/2.8

XR Di II LD Aspherical [IF]

[Equivalent to 26-78mm*]

* When converted to 35mm film format.

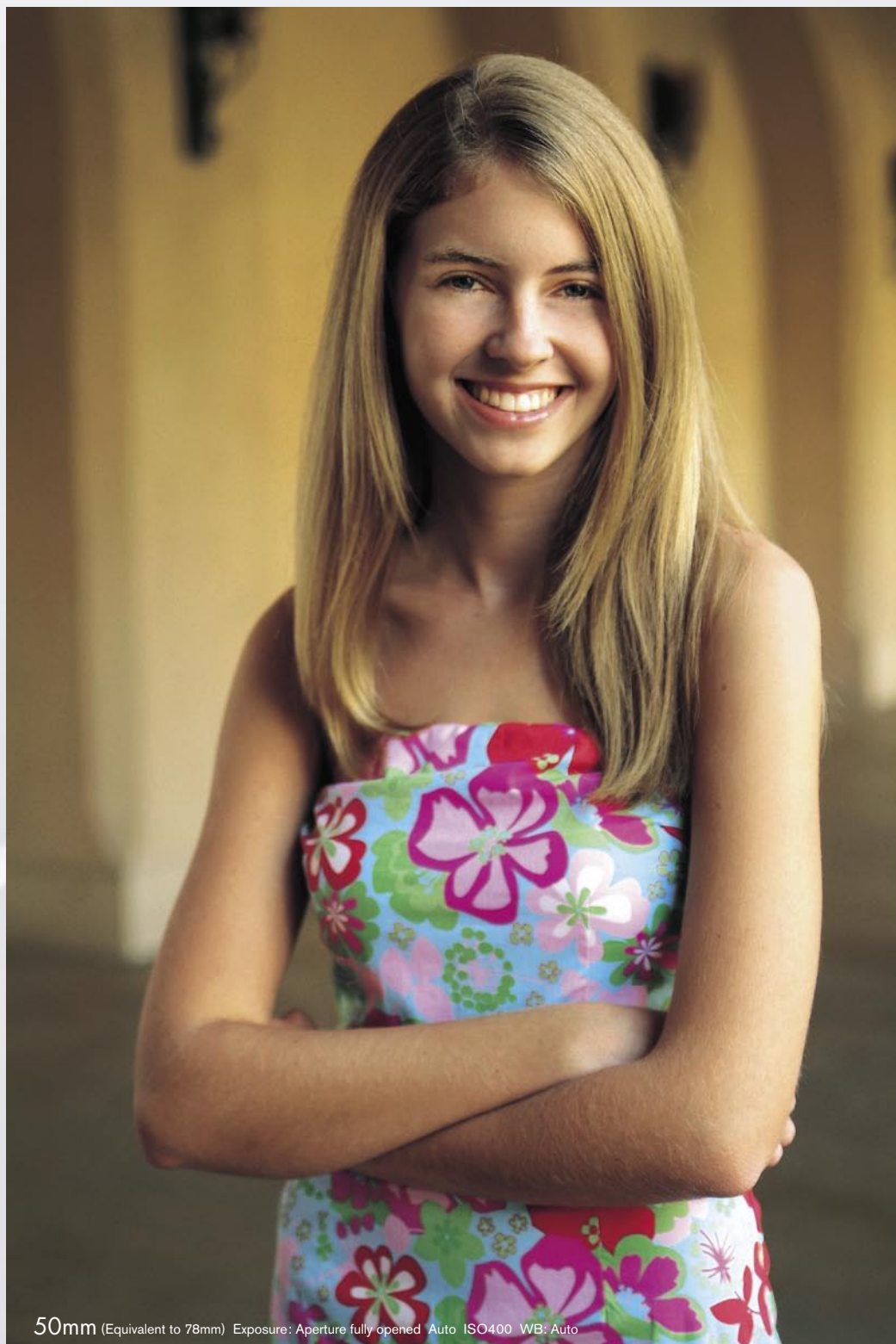
For Digital
with smaller-size imagers

TAMRON

New eyes for industry

Give your
digital camera
a new outlook
on life

new



50mm (Equivalent to 78mm) Exposure: Aperture fully opened Auto ISO400 WB: Auto

Model A16
For Canon AF, Konica Minolta AF-D and Nikon AF-D

Di II Lens designed for exclusive use on
digital SLR cameras with smaller-size imagers.

*This lens is not designed for use with 35mm film cameras and digital SLR cameras with image sensors larger than 24x16mm.

www.tamroneurope.com

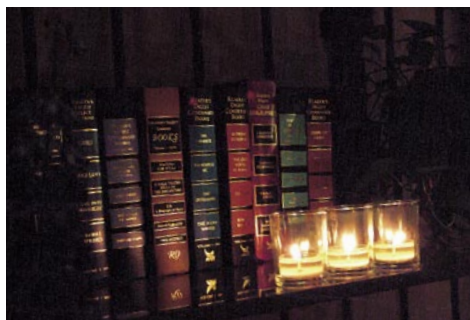
E

Introducing a fast standard zoom lens with a wide-end 17mm focal length

Fast, yet remarkably lightweight and compact

Introducing a fast new lens that expands upon the product concept of the popular SP AF28-75mm F/2.8 XR Di zoom featuring a 17mm focal length to offer a wider angle of view than ordinary standard zoom lenses. This 17mm-50mm standard zoom*, designed exclusively for digital SLR cameras with smaller-size imagers (24 x 16mm or smaller), is extremely lightweight and compact for its speed. With a fast F/2.8 throughout the range, it delivers faster shutter speeds and a natural soft-focus effect that makes your photography even more sophisticated. Give your camera what it's been waiting for, and realize your creative potential.

*An attractive 26mm-78mm range when converted to the 35mm film format.



50mm (Equivalent to 78mm) Exposure: Aperture fully opened Auto ISO400

Tamron Di II and SP specs deliver superior image quality

Constructed with cutting-edge Tamron elements—Three elements of XR (Extra Refractive Index) glass, two Hybrid Aspherical lens elements, and one element of LD glass—this elegant piece of technology inherits Tamron's tradition of premium image quality and compact size. By incorporating Tamron's SP (Super Performance) and Di-II (designed exclusively for digital cameras) specifications, along with special internal surface coatings to eliminate ghosting and flare, you're ensured to get the superior performance you need from your digital camera.

50mm (Equivalent to 78mm)
Exposure: F/8 Auto ISO100
MFD: 0.27m Maximum Magnification Ratio: 1:4.5*

*Since APS-C sized image sensors are smaller than 35mm film, the 17-50mm can fill the frame with almost the same scope as a lens with a Max. Mag. Ratio of 1:3.0 on a 35mm SLR camera.



A wider angle 17mm lens to broaden your horizons

Tamron's SP AF17-50mm offers a wider angle than the standard 18mm zoom lenses ordinarily used with digital cameras. With a wider-angle focal length of 17mm (26mm equivalent), this lens is unbeatable for indoor photography, and for capturing full length people shots or an entire building into the shot. The lens is also top-level in its class* for minimum focus distance at 27cm (10.6") across the entire zoom range, making it easier than ever to enjoy the creative combination of wide-angle and macro photography.

*Among fast standard zoom lenses with an F/2.8 maximum aperture throughout the entire range designed exclusively for digital SLR cameras.



17mm (Equivalent to 26mm) Exposure: F/8 Auto ISO400

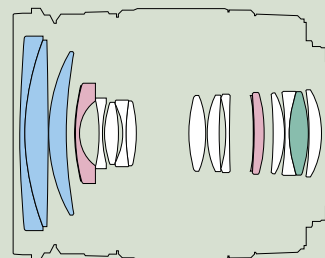
● Specifications

Model	A16
Focal Length	17-50mm
Maximum Aperture	F/2.8
Angle of View	(Diagonal) 78°45'31"11" (Horizontal) 68°37'26"7" (Vertical) 49°1'17"22"
Lens Construction	16 elements in 13 groups
Minimum Focus Distance	0.27m (10.6") (The entire zoom range)
Max.Mag.Ratio	1:4.5 (at f=50mm, MFD:0.27m)
Overall Length	83.2mm (3.3")*
Maximum Diameter	ø73.8mm (2.9")
Filter Size	ø67mm
Weight	430g (15.2oz.)*
Diaphragm Blades	7
Minimum Aperture	F/32
Standard Accessory	Flower-shaped hood
Compatible Mount	Canon AF, Konica Minolta AF-D and Nikon AF-D

*Values given are for Nikon AF cameras.

● Lens Construction

<16 elements in 13 groups>



■ XR(Extra Refractive-Index) glass ■ Aspherical Lens ■ LD* glass

*LD (Low Dispersion)

new



Model A16

SP AF17-50mm F/2.8 XR Di II LD Aspherical [IF]

For Digital with smaller-size imagers

For Canon AF, Konica Minolta AF-D and Nikon AF-D

Caution : Please read the instruction manual carefully before using the lens.

TAMRON

Manufacturer of precise and sophisticated optical products for a broad range of industries.



Quality Assurance Activities: At Tamron, quality management activities are performed in compliance with ISO9001:2000 not only to assure product quality but to enhance customer satisfaction.

Environmental Protection: We recognize the significance of our social responsibilities. Tamron promotes corporate activities that protect the earth's environment through the establishment of a quality assurance system that is compliant with ISO14001.

TAMRON Europe GmbH www.tamroneurope.com

Robert-Bosch-Str. 9, 50769 Köln, Tel. +49 (0)221 970325-0, Fax +49 (0)221 970325-4, tamron-europe@tamron.de

TAMRON CO., LTD. <http://www.tamron.co.jp>

1385, Hasunuma, Minuma-ku, Saitama-shi Saitama 337-8556 JAPAN Tel: +81-48-684-9339 Fax: +81-48-684-9349