

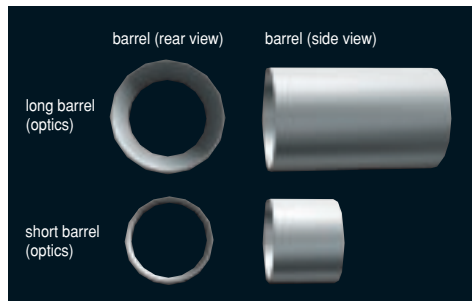
AF28-300mm F/3.5-6.3 **XR** **Di** **NEW**

LD ASPHERICAL (IF) MACRO Model A061 For Canon AF, Minolta AF-D, Nikon AF-D, and Pentax AF cameras.

XR Toward Ever Greater Compactness Featuring Key XR Technology

Reducing the total length of the optical configuration, we succeeded in developing optics that allow for a smaller lens diameter while maintaining the same aperture values as previous lenses for overall compactness. Optical power distribution was enhanced in a compact package through the innovative use of XR (Extra Refractive Index) glass, resulting in minimum aberration.

■ **Achieving the same aperture value with a smaller size**
With a short barrel, it is possible to obtain the same visibility (aperture value) as with a long barrel. By using this principle, we were able to shorten the optic system length for a more compact overall lens design while maintaining aperture values.



Di New Standard of Lenses for Digital Cameras

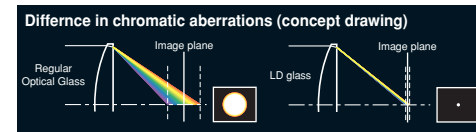
Di (Digitally Integrated Design) is a designation Tamron puts on lenses featuring optical systems designed to meet the performance characteristics of digital SLR cameras as well as film cameras.



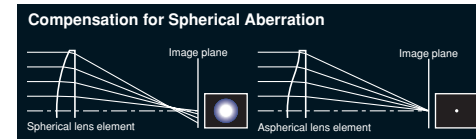
*Values given are for Nikon AF cameras.

Advanced optical designs include XR, LD, AD and ASL glass

The ASL lens technology compensates for spherical aberration to achieve outstanding image quality. At the same time, reducing the number of elements results in a more compact, lightweight lens package.



■ Compensation effect with an aspherical lens element (Schematic Illustration)



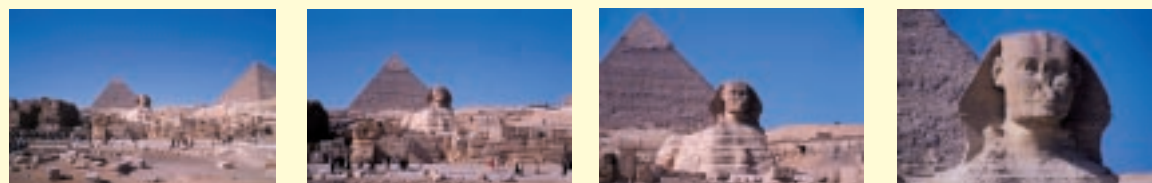
Model A061 Specifications

Model :	A061
Focal Length :	28-300mm
Angle of View :	75°-8°
Maximum Aperture :	F/3.5-6.3
Optical Construction :	15 elements / 13 groups
Diaphragm Blades :	9
Minimum Object Distance :	0.49m (19.3")
Max. Magnification Ratio :	1 : 2.9 (at f=300mm, M.O.D. 49cm)
Overall Length :	83.7mm (3.3")* (at maximum extension: 163.2mm (6.4"))
Maximum Diameter :	ø 73mm (2.9")
Filter Size :	ø 62mm
Weight :	420g (14.8oz.)*
Standard Accessories	Flower-shaped hood

For Canon AF, Minolta AF-D, Nikon AF-D, and Pentax AF cameras.
*Values given are for Nikon AF cameras.

Amazing High Power Zoom

Taken with a **film camera** (28-300mm)

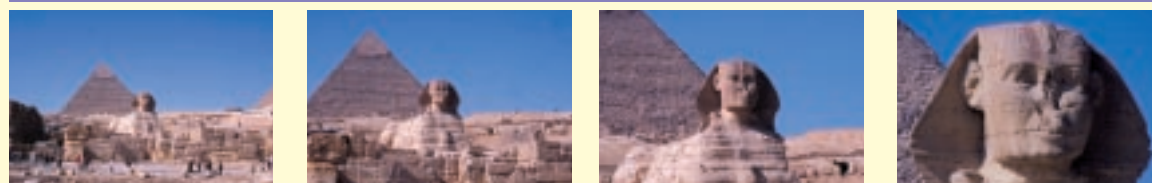


▶ 28mm ▶ 50mm ▶ 100mm ▶ 300mm

▼ Equivalent angle of view when used with APS-C size Digital SLRs (approximation)

Equivalent to ▶ 43mm ▶ 78mm ▶ 155mm ▶ 465mm

Taken with a **digital camera** (APS-C size)



*The angle of view is equivalent to approx. 43-465mm (using a conversion to 35mm)

⚠ **Caution** : Please read the instruction manual carefully before using the lens.

TAMRON

Manufacturer of lenses of photographic, industrial, laboratory, video, and scientific applications.

TAMRON Europe GmbH
Robert-Bosch-Straße 9, 50769 Köln
Telefon +49 (0221) 97 03 25-0
Telefax +49 (0221) 97 03 25-4
www.tamron-europe.com
tamron-europe@tamron.de



ISO 9001 Certified
Tamron operates a quality management system that has been certified as conforming to ISO 9001.
ISO 14001 Certified
Tamron operates an environmental management system that has been certified as conforming to ISO 14001.

A061-EG-111-U-0408-0300

TAMRON

NEW

AF28-300mm F/3.5-6.3 **XR** **Di**

LD ASPHERICAL (IF) MACRO Model A061 For Canon AF, Minolta AF-D, Nikon AF-D, and Pentax AF cameras.

Tamron's 28-300mm
now features "Di" design
for extraordinary film and digital photography



Model A061



Film, or Digital?

One answer. One lens.



28mm Exposure:F/11 Auto ISO200 WB:Auto (Taken with an APS-C size digital camera.)



300mm Exposure:Aperture fully opened Auto ISO200 WB:Auto (Taken with an APS-C size digital camera.)



300mm Exposure:Aperture fully opened Auto ISO200 WB:Auto (Taken with an APS-C size digital camera.)

- **The world's smallest and lightest*¹ 28-300mm lens**
- **Remarkable close-focusing from wide to tele**
- (M.O.D.*² of 49cm /19.3" throughout the range)
- **True macro capabilities with no mode-switching**
- **Max. Magnification ratio of 1:2.9 at 300mm**

*1: As of June, 2004. Based upon Tamron research of lenses in the same class.
*2: M.O.D = Minimum object distance

Maintaining the high performance of the previous model, Tamron's new 28-300mm zoom lens now features our "Di" *³ design, making it the ideal lens for use with both digital and film cameras. The "Di" design is achieved by applying a new optical design to its coated surfaces, and by further enhancing our already stringent quality control system. Whether you shoot film or digital, the lens provides high image quality for both platforms.

When used with APS-C size digital SLR cameras, the lens provides an angle of view equivalent to approximately 43-465mm, covering the standard to ultra telephoto range with no sacrifice of quality or aperture range.

*3: "Di" (Digitally Integrated Design) is the designation Tamron puts on lenses featuring optical systems designed to meet the performance characteristic of digital SLR cameras as well as film cameras.



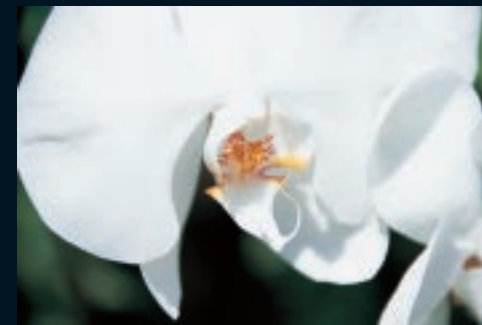
135mm Exposure:F/8 Auto ISO100 WB:Auto (Taken with an APS-C size digital camera.)

•Close-up

With an astonishing 1:2.9 Maximum Magnification ratio, the greatest in its class, you can capture strongly appealing images of subjects as small as an audio cassette.

When captured with an APS-C size digital camera, the subject is magnified more than with a film camera, providing a greater telephoto effect.

Film Camera



f=300mm M.O.D. 49cm / 19.3" (Max.Magnification ratio 1:2.9)
Exposure:F/6.3 Auto ISO200 WB:Auto (Taken with a film camera.)

Digital Camera (ASP-C Size)



f=300mm M.O.D. 49cm / 19.3" (Max.Magnification ratio 1:2.9)
Exposure:F/6.3 Auto ISO200 WB:Auto (Taken with an APS-C size digital camera.)

Tamron Di lens series

Compatible with both film and digital cameras — **Di Lens**



New Standard of Lenses for Digital Cameras
"Di" (Digitally Integrated Design) is the designation Tamron puts on lenses featuring optical systems designed to meet the performance characteristic of digital SLR cameras as well as film cameras.

- **High image quality**
(enhanced quality control system and optical features)
- **Usability**
(convenient high power zoom; all-in-one lens)
- **Affordability**



AF28-300mm
F/3.5-6.3 XR Di
LD ASPHERICAL (IF) MACRO
Model A061

Superior quality — **SP Di Lens**

SP
Super Performance
Series



- **Super performance**
(high design specifications; unique features)
- **Superior image quality**
(priority on outstanding performance free from cost restraints)

SP AF17-35mm Di (Model A05)
SP AF28-75mm Di (Model A09)
SP AF90mm Di (Model 272E)
SP AF180mm Di (Model B01)
SP AF200-500mm Di (Model A08)