

English

MCE Remote Control

(Remote Control & USB Receiver)

Owner's Manual



This wireless remote control set lets you control your PC working on Windows Vista MCE .

General Security Note:

Technical manipulations of the product or any changes to the product are forbidden, because of security and approval issues.

Please take care to set up the device correctly – consult your user guide. Children should use the device only under adult supervision.

Avoid the following :

- strong mechanical wear and tear
- high temperature
- strong vibrations
- high humidity

Please also respect the additional security notes in the various user guide chapters. For questions not covered from the user guide please contact our technical hotline or another specialist.

To ensure correct set up please read the manual and security notes carefully.

Battery change:

The device may only be used with 2 AAA Alkaline batteries – never try to connect to another power supply. When inserting batteries be sure the right polarity is used. Remove the batteries when the device is not used for a longer period. Make sure that the batteries are not short circuited and are not disposed in fire (danger of explosion).

Batteries do not belong in children hands. Don't let batteries lay around openly – they might be swallowed by children or animals. If this happens see a doctor immediately.

Leaking or damaged batteries can upon contact with skin cause burning or acid damage – if necessary use suitable gloves.

Please dispose of batteries in accordance with local by laws.

Installation:

Remote Control:

Installing batteries:

1. Open the battery compartment on the back of the remote by carefully pulling the clip on the cover and lifting it at the same time
2. Insert 2 **AAA alkaline** batteries in the battery compartment. Respect the battery polarity shown in the diagram inside the compartment (+ must correspond with + and - with -).
3. Close the battery compartment.

USB Receiver

Installing the remote control receiver:

Insert the USB plug of the remote control receiver in a free USB slot of your computer (refer to your computer operating manual).

Your PC will automatically detect the device and automatically integrate it.

You can now use the remote control to operate your Windows Media Center Edition PC.

Operation:

Refer to your Windows Vista Media Center operating manual.

For some computers, using the remote control for waking up the system from standby/hibernation or turning on might not be supported.

Changing the transmission/reception channels:

Your MCE Remote Control and your PC can be programmed to operate on 16 different channels. By default, your MCE Remote Control and PC are configured to operate on the channel 1 option. If you are using a single MCE Remote Control and PC in the same area, you won't need to change this setting.

If you are using more than one MCE Remote Control and PC in the same area (approx. 10 metres), we recommend that you assign each of your remotes and PC a different channel. Doing this will prevent the various remotes from interfering with one another when they are being used at the same time.

Proceed as follows:

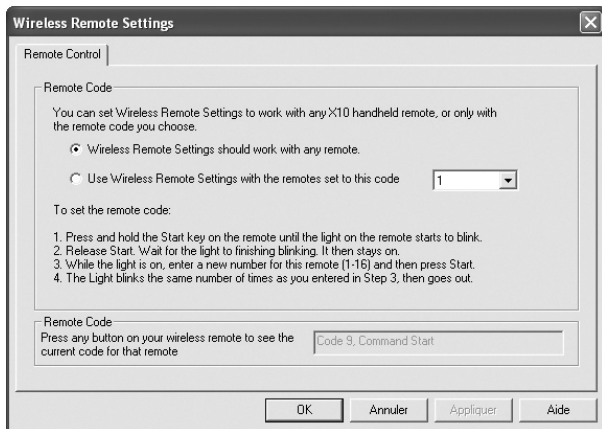
Remote control:

1. Press and hold the MCE start key (green key) on the remote until the red light on the remote start to blink.
2. Release the start key. Wait for the light to finishing blinking and then stays on (the light blinks the same number of time as the actual remote channel).
3. While the light is On, enter the new channel for the remote (1 to 16) and then press the Start key.
4. The light blinks the same number of times as you entered in step 3 (new channel) and then goes out.

PC:

1. Open the Control Pannel of your PC and double click on the "Wireless Remote Setting" Icon.

The window shown bellow is display:



2. Select "Wireless Remote Settings should work with any remote" if you want your PC to work with any MCE Remote Control independently of the channel number
or
Select "Use Wireless Remote Settings with the remotes sets to this code" and enter the channel number (same channel number as in you MCE Remote Control) using the scrolling menu if you want your PC to work only with a remote control set to the same channel.
3. Press OK to confirm.

Troubleshooting:

If the remote doesn't do anything (no red light when you press any buttons)

- Check that the batteries are fitted properly (observe polarity). Replace with 2 fresh **alkaline AAA** type.

If you can not control your PC with the remote

- Check that the receiver is properly connected to your PC's USB port.
- Check that the remote control and the PC are set to the same channel or that your PC is set to work with any remote.
- If you have plug the receiver into a USB plug at the back of your PC, try to plug it in front of you PC.
- Move the receiver as far away from your PC and monitor as its cable allows using USB extension cable if necessary (not provided).

Technical specifications

Frequency:	433.92 MHz
Radiated output (remote control):	<1mW
Range:	5 to 10 meters depending of the environment.
Working Temperature:	0 to 40°C
Power:	2 AAA 1.5V alkaline batteries (Remote control) 5V through the USB port (USB receiver)

NOTE: NO CHANGES OR MODIFICATIONS MAY BE MADE TO THE UNITS. ANY CHANGES MADE TO THE UNITS WILL VOID THE USER'S AUTHORITY TO OPERATE THE EQUIPMENT.



Following information is only for EU-member states:

The use of the symbol indicates that this product may not be treated as household waste. By ensuring this product is disposed of correctly, you will help prevent potential negative consequences for the environment and human health, which could otherwise be caused by inappropriate waste handling of this product. For more detailed information about recycling of this product, please contact your local city office, your household waste disposal service or the shop where you purchased the product.