

NMS100

ProSafe™ Network Management System

Network monitoring and management offers proactive problem resolution

- *Help is there when you need it! NETGEAR provides 24x7 technical support* in English, with selected local language support during office hours.*

● Powerful, Easy-to-Use Network Management Software

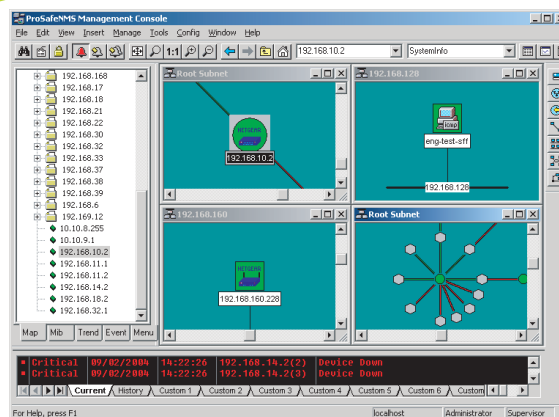
When you need insight into your infrastructure to control and optimize network operation, NETGEAR's ProSafe Network Management System NMS100 provides the solution. ProSafe NMS100 helps you configure, manage, and diagnose your network, ensuring it delivers data and services in a timely, reliable and cost effective manner. Easy to use, proactive, and secure, ProSafe NMS100 facilitates the network administration tasks required to monitor and control sophisticated heterogeneous data networks.

ProSafe NMS100 works with any managed device that uses industry-standard Simple Network Management Protocol (SNMP), such as Layer 2 switches, Layer 3 switches, wireless access points, traditional routers, servers and printers. It automatically discovers and maps up to 1,000 devices on your heterogeneous network. Network statistics can be graphed in real time, or stored as historical data for trend analysis. Proactive thresholds and alerts, including email or pager notification, detect bottlenecks and other network problems and inform you of trouble *before* users start to call. An easy-to-use graphical interface enables you to monitor everything from network elements to users and groups of devices. Optimized for NETGEAR managed network products, you can view NETGEAR-specific information, globally highlight NETGEAR VLANs and list all known NETGEAR devices. A fully functional 30-day trial version included with every NETGEAR managed product.

Easy-to-Use ● ProSafe NMS100 simplifies IT staff work with automatic discovery and topology mapping, accurately building a logical network map for easy navigation. An Explorer-style view of network devices, MIBs and events reduces the time to find individual network elements. The ProSafe NMS100 features GUI-based device configuration and easy-to-use reports on network availability, performance and utilization. NETGEAR utilities display all known NETGEAR devices, along with system information and firmware revisions, and all VLANs configured on NETGEAR switches.

Proactive ● Preset or custom thresholds alert you to impending trouble spots. Air Messenger Pro Paging software provides immediate network event notification, alerting network personnel so they can prevent problems before they turn into outages. Filtered event logging delivers the ability to do after-the-fact analysis of events, in chronological order, to better prevent network outages in the future. Trend reporting capabilities offer insight into long-term network performance and growth. ProSafe NMS100 provides the tools for capacity planning and the ability analyze hotspots where future congestion may be an issue.

Versatile ● Optimized for NETGEAR managed products, ProSafe NMS100 supports managed devices from other major network and equipment vendors. This includes all network components that conform to standard MIBs, as well as private MIBs from 3Com, Cisco, HP and other major manufacturers. Full-featured MIB browser supports SNMP v1, v2c, and v3. RMON tools give quick access to remote monitoring capabilities built into RMON probes and NETGEAR switches. Support for SNMPv3 ensures encrypted communications to devices in insecure environments. ProSafe NMS100 also provides the ability to discover non-SNMP products on the network, and allows for customized labeling of those elements.



Easy-to-use Graphical User Interface delivers quick access to vital network information at a glance.

Product Specifications

- **Network Protocol and Standards Compatibility:**
 - SNMP v1, v2c, v3 with SHA/MD5 Authentication and DES encryption
 - RFC 1157 SNMP
 - RFC 1757 RMON
 - RFC 1213 MIB II
 - RFC 1442-1450 SNMP v2
 - RFC 3410-3418 SNMP v3
 - Pre-Compiled MIB II and Enterprise MIBs
 - ASN.1 MIB Compiler/Browser included
- **Warranty:**
 - 90 days (media)

System Requirements

- Pentium III 600 MHz
- 128 MB memory
- 500 MB free disk space
- Screen Size: 800x600
- Microsoft Windows 2003/XP/2000/NT/ME/98

Package Contents

- CD
- License Key
- Support Information card

NETGEAR®

4500 Great America Parkway
Santa Clara, CA 95054 USA
Phone: 1-888-NETGEAR
E-mail: info@NETGEAR.com
www.NETGEAR.com

©2004 NETGEAR, Inc. NETGEAR®, the Netgear Logo, ProSafe, and Everybody's connecting are trademarks or registered trademarks of Netgear, Inc. in the United States and/or other countries. Microsoft, Windows, and the Windows logo are trademarks, or registered trademarks of Microsoft Corporation in the United States and/or other countries. Other brand and product names are trademarks or registered trademarks of their respective holders. Free phone support available 90 days from purchase date. Information is subject to change without notice. All rights reserved.

NETGEAR Related Products

- FSM726 10/100 Managed Switch
- FSM726S 10/100 Managed Stackable Switch
- FSM750S 10/100 Managed Stackable Switch
- GSM712 Gigabit Managed Switch
- GSM712F Gigabit Managed Switch
- GSM7224 Gigabit Managed Switch
- GSM7312 Layer 3 Gigabit Managed Switch
- GSM7324 Layer 3 Gigabit Managed Switch
- FSM7326P Layer 3 10/100 Managed Switch with Power over Ethernet
- WG302 ProSafe 802.11g Wireless Access Point