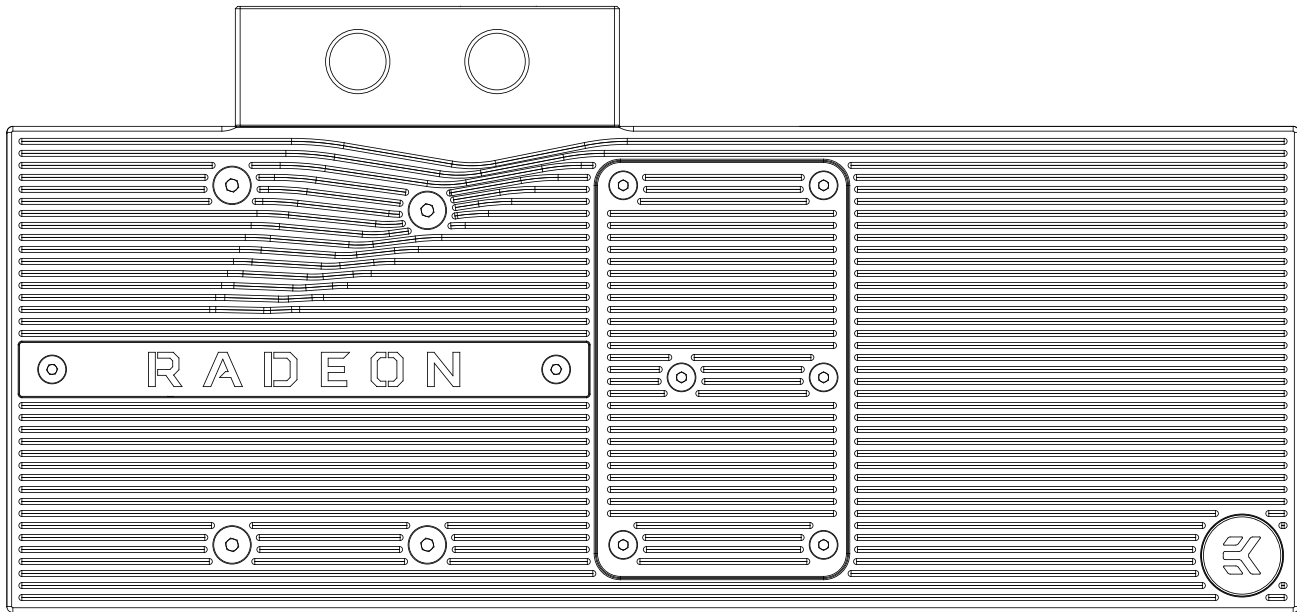




EK-Vector Radeon RX 5700 Special Edition

GPU WATER BLOCK + BACKPLATE



This product is compatible with AMD Radeon RX 5700 +XT graphic card. It is intended for installation only by expert users. Please consult with a qualified technician for installation. Improper installation may result in damage to your equipment. EK Water Blocks assumes no liability whatsoever, expressed or implied, for the use of these products, nor their installation. The following instructions are subject to change without notice. Please visit our web site at www.ekwb.com for updates. Before installation of this product please read important notice, disclosure and warranty conditions printed on the back of the box.

Before you start using this product please follow these basic guidelines:

Please carefully read the manual before beginning with the installation process!

Please remove your graphics card from the computer to assure safest mounting process in order to prevent any possible damages to your GPU and/or graphics card circuit board (PCB).

The EK Fittings require only a small amount of force to screw them firmly in place since the liquid seal is ensured by the rubber O-ring gaskets.

The use of corrosion inhibiting coolants is always recommended for liquid cooling systems, and mandatory for nickel plated water blocks!

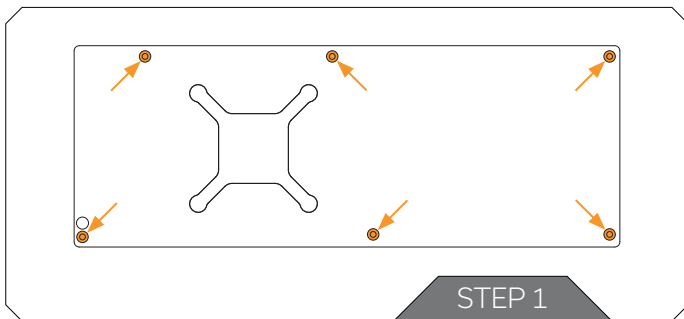
Do not use pure distilled water! For best results EK recommends the use of EK-CryoFuel coolants!

Make sure to thoroughly bleed air out of your water block, or you will not reach optimal performance!

TABLE OF CONTENT

PREPARING YOUR GRAPHIC CARD	4
INSTALLING THE WATER BLOCK	7
CHECKING FOR CONTACTS	8
INSERTING THE CARD IN YOUR PC CASE	8
INSTALLATION OF FITTINGS AND TUBING	9
CONNECTING THE D-RGB LED STRIP	9
INSTALLING THE BACKPLATE	10
IMPORTANT DISCLOSURES	12
REQUIRED TOOLS	12
SUPPORT AND SERVICE	13
SOCIAL MEDIA	13

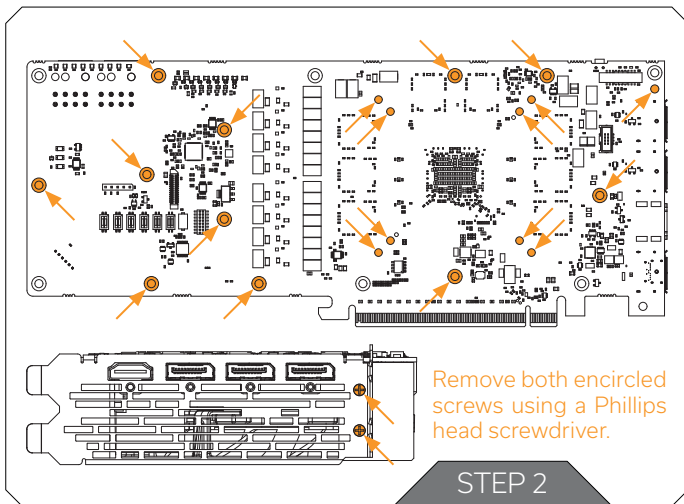
PREPARING YOUR GRAPHIC CARD



STEP 1

REMOVING THE FACTORY PROVIDED BACKPLATE

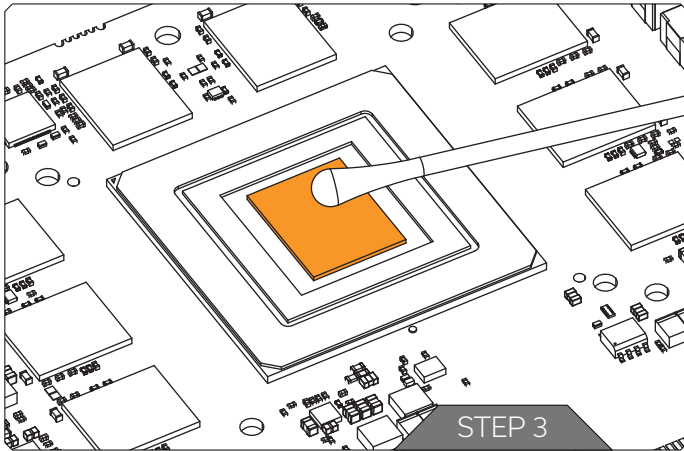
Remove all encircled screws using a Phillips head screwdriver, then take off the backplate.



STEP 2

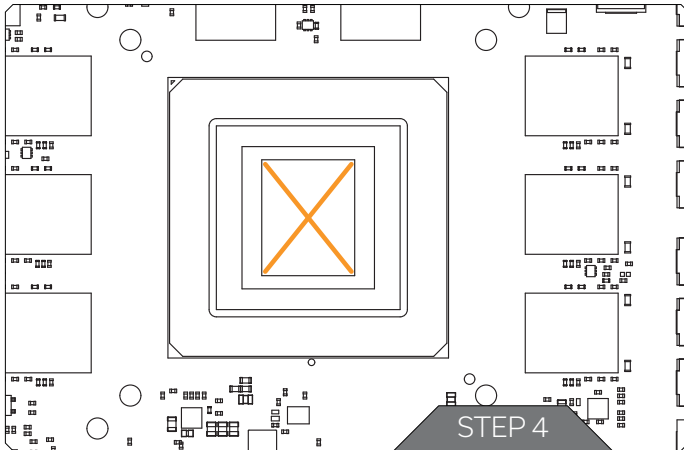
REMOVING THE STOCK COOLER

Remove the remaining screws as shown below. The cooler can now be gently removed, take care to unplug the LED and Fan connections. If there are any self-adhesive washers on either side of the PCB these should also be removed.



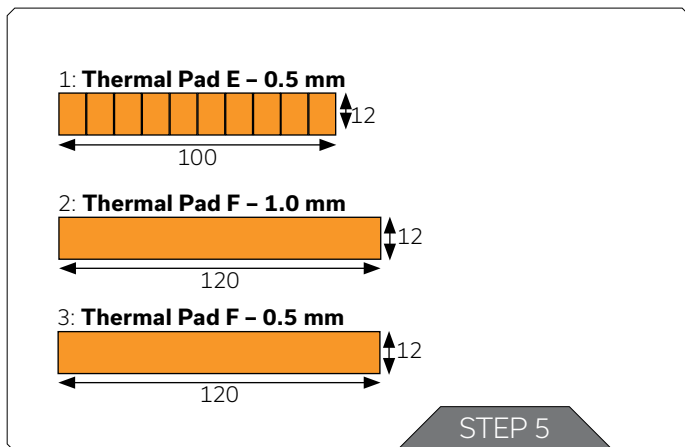
STEP 3 CLEANING THE PCB

Wipe off the remains of any thermal compound from the GPU core by using a non-abrasive cloth or q-tip. EKWB recommends the use of denatured alcohol for removing TIM leftovers. Additionally, remove all of the stock thermal pads from both sides of the PCB.



STEP 4 APPLYING THERMAL COMPOUND

Lightly cover AMD GPU chip with enclosed EK-TIM Ectotherm thermal grease. EKWB recommends to apply the thermal grease in a cross form to best performance (see sample picture).

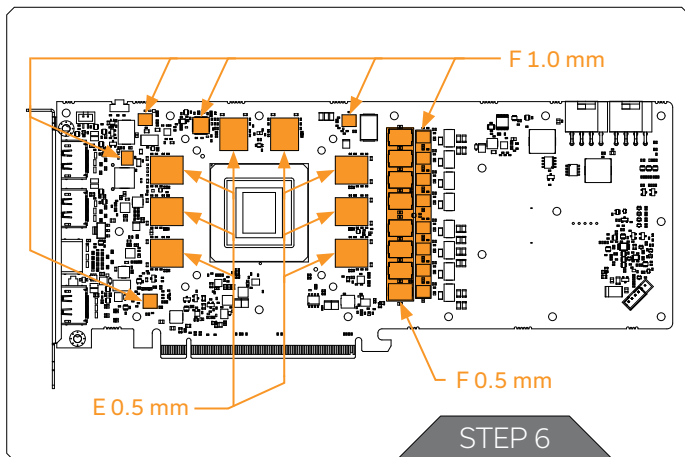


STEP 5 CUTTING THERMAL PADS

Your block is supplied with thermal pads that need to be cut into smaller pieces in order to cover all VRM components. PLEASE REMOVE THE PROTECTIVE FOIL FROM BOTH SIDES OF THE THERMAL PADS PRIOR TO INSTALLATION.

Replacement thermal pads:

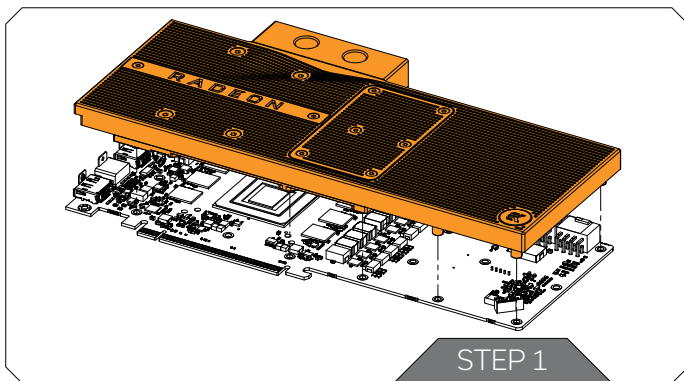
1. Thermal Pad E - 0.5 mm (RAM 8x) - (EAN: 3830046996688)
2. Thermal Pad F 1,0 mm - (120 x 16 mm) - (EAN:3830046996732)
3. Thermal Pad F 0,5 mm - (120 x 16mm) - (EAN: 3830046996725)



STEP 6 PLACING THERMAL PADS

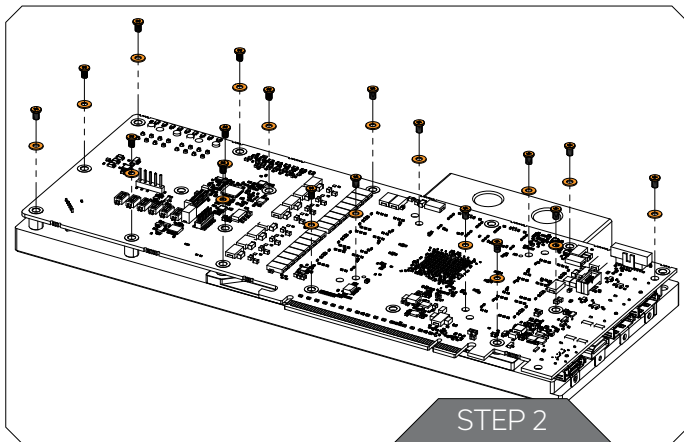
Once cut to size the thermal pads should be applied to the PCB as illustrated below. EK made sure to provide customers with more than adequate quantity of thermal pads to complete this step.

INSTALLING THE WATER BLOCK



STEP 1 PLACING THE BLOCK ON TO THE GRAPHICS CARD

Carefully position the water block with preinstalled standoffs on to the graphics card. During this process please make sure you align mounting holes on the PCB with holes on the water block. Also pay attention not to use too much force by pressing the block down onto the PCB. Chip dies are prone to cracking. This procedure is the same for all Full Cover water blocks.

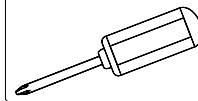


STEP 2 ATTACHING THE BLOCK TO THE GRAPHIC CARD

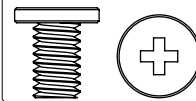
Use a Phillips head screwdriver with the enclosed M2,5 x 4 AX1 screws. EKWB recommends users to start tightening the screws evenly around the GPU core and then to continue outwards. Always use a plastic washer under every screw.

In this step you will need:

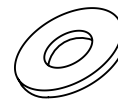
Phillips-head
screwdriver



M 2.5 x 4 AX1
18 pcs



M 2.5 PVC washer
18 pcs



CHECKING FOR CONTACTS

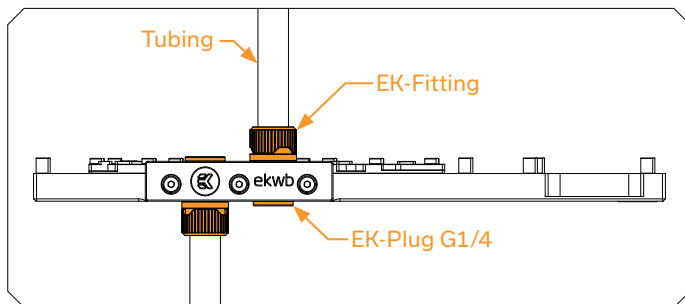
If necessary remove the water block to check for uniform surface contact between the block and the components, pay special attention to the VRM section of the graphics card. Check whether the water block makes contact with the intended integrated circuit. Then repeat sub-steps in previous section to re-attach the block.

In case you fail to obtain good contact, please check again that your thermal pad thickness or contact our support service at: <http://www.ekwb.com/support>.

INSERTING THE CARD IN YOUR PC CASE

Carefully lift your graphics card with block installed and insert it into the correct PCIe expansion slot on your PC's motherboard (consult motherboard manual). Please consider that your graphics card might be heavier than it was with the stock cooler, so be very careful when handling it. Avoid excessive manipulation of the graphics card assembly which may damage your graphics card, motherboard or water block during installation.

INSTALLATION OF FITTINGS AND TUBING

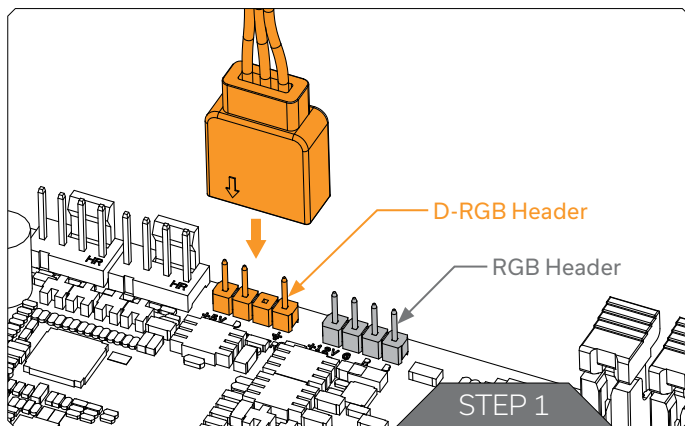


Screw in two male G1/4 threaded fittings. Attach the liquid cooling tubes and connect the water-block(s) into the cooling loop. **EKWB recommends using EK- fittings with the EK-Vector series water blocks.** If you are using barb fittings please add hose clamps or an appropriate substitute to ensure that the tubes are firmly secured.

You can configure any port as an inlet or outlet. Do not forget to plug all remaining ports with the enclosed EK-Plug G1/4 or equivalents.

CAUTION: If using fittings or plugs not recommending by EK take special care to check the length of the male G1/4 threads. 5 mm is the maximum allowed G1/4 thread length!

CONNECTING THE D-RGB LED STRIP



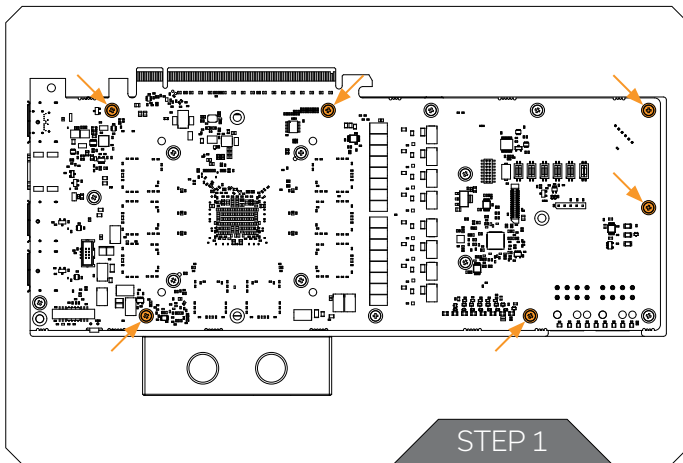
STEP 1

Plug the 3-pin connector from Water block's D-RGB LED light to the DRGB HEADER on the motherboard. The LED will work if the pin layout on the header is as follows: +5V, Digital.



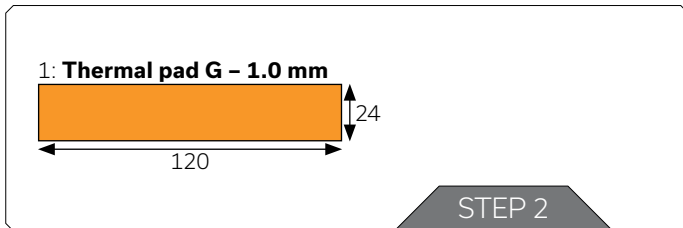
Please ensure that the arrow indicated on the connector is plugged into the +5V line as indicated on your motherboard. If you put LED Diode to the 12V RGB HEADER you can damage the LEDs.

INSTALLING THE BACKPLATE



STEP 1 PREPARING YOUR GRAPHICS CARD

EK-Vector Radeon RX5700 + XT Special Edition Backplate is very simple to install. First complete the installation of your EK-Vector Radeon RX5700 Special Edition Water Block according to its installation manual. Using the Phillips head screwdriver remove the 6 screws and their PVC washers which are marked below.

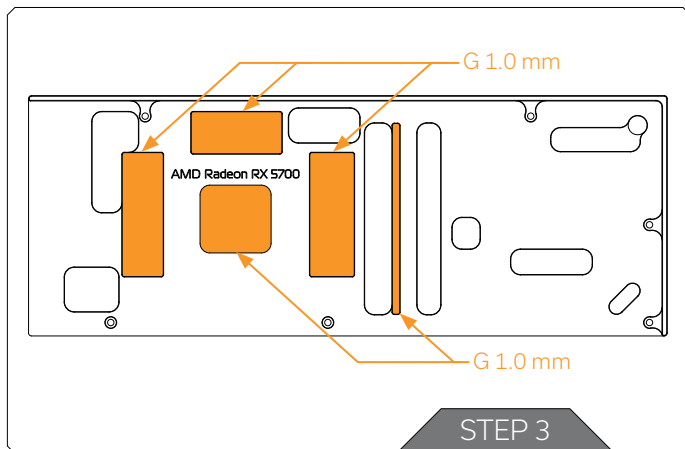


STEP 2 CUTTING THERMAL PADS

Your backplate is supplied with thermal pads that needs to be cut into smaller pieces in order to cover all VRM components. PLEASE REMOVE THE PROTECTIVE FOIL FROM BOTH SIDES OF THE THERMAL PADS PRIOR TO INSTALLATION.

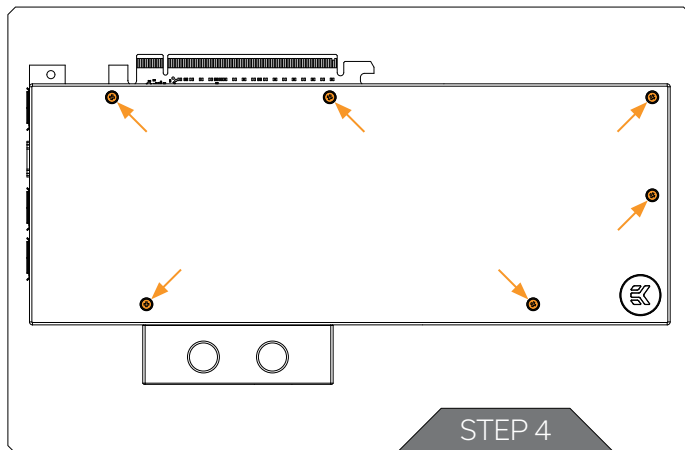
Replacement thermal pads:

1. Thermal Pad G 1.0 mm - (120 x 24) - (EAN: 3830046996770)



STEP 3 PLACING THERMAL PADS

Once cut to size thermal pads should be applied to the backplate as illustrated below. EK made sure to provide customers with more than adequate quantity of thermal pads to complete this step.



STEP 4 ATTACHING THE BACKPLATE

Place the backplate on to the PCB aligning all of the holes. Position an M2.5 x 7 AX1 screw in each of the (6) mounting holes marked below and then tighten them evenly using a Phillips head screwdriver. Do not use excessive screwing force.

IMPORTANT DISCLOSURES

VERY IMPORTANT NOTICE

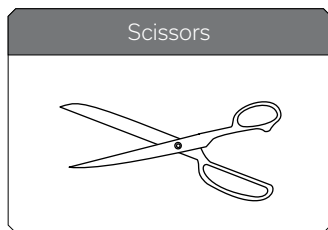
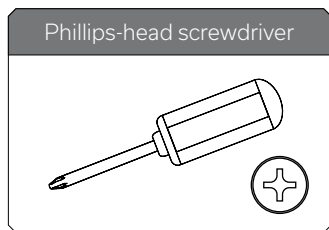
Once the installation is completed, it is a recommended practice to test the cooling circuit for leaks prior to powering up the computer. We recommend a 24 hour leak test prior to powering up the computer. Do not test the water block using city water pressure. This will rupture the top of the housing and render the block unusable (and will void your warranty). While all efforts have been made to provide the most comprehensive tutorial possible, EK Water Blocks assumes no liability expressed or implied for any consequential damage(s) occurring to your equipment as a result of using EK Water Blocks cooling products, either due to errors or omissions on our part in the above instructions, or due to failure or defect in the EK Water Blocks cooling products.

WARRANTY

Our products are warranted against defects in materials or workmanship for a period of 24 months beginning from the date of delivery to the final user. During this period, products will be repaired or have parts replaced at our discretion provided that: (I) the product

is returned to the agent from whom it was purchased; (II) the product has been purchased by an end user and has not used for commercial purposes; (III) the product has not been misused, handled carelessly, or used in a manner other than in accordance with the instructions provided describing its installation and proper use. This warranty does not confer rights other than those expressly set out above and does not cover any claims for consequential loss or damage. This warranty is offered as an extra benefit and does not affect your statutory rights as a consumer. This warranty is voided if the product comes in contact with aggressive UV additives or other improper liquids. EK blocks are sealed with warranty void circular label, which proves that the block has withstood a pressure leak test. Removing it will void leak-free guarantee and not the guarantee on the product itself. Any other RMA issues can be reported to EK Support at www.ekwb.com/support for further analysis.

REQUIRED TOOLS




SUPPORT AND SERVICE

For assistance please contact:


<http://support.ekwb.com/>

EKWB d.o.o.
Pod lipami 18
1218 Komenda
Slovenia - EU


SOCIAL MEDIA

 EKWaterBlocks

 @EKWaterBlocks

 ekwaterblocks

 EKWBofficial

 ekwaterblocks

