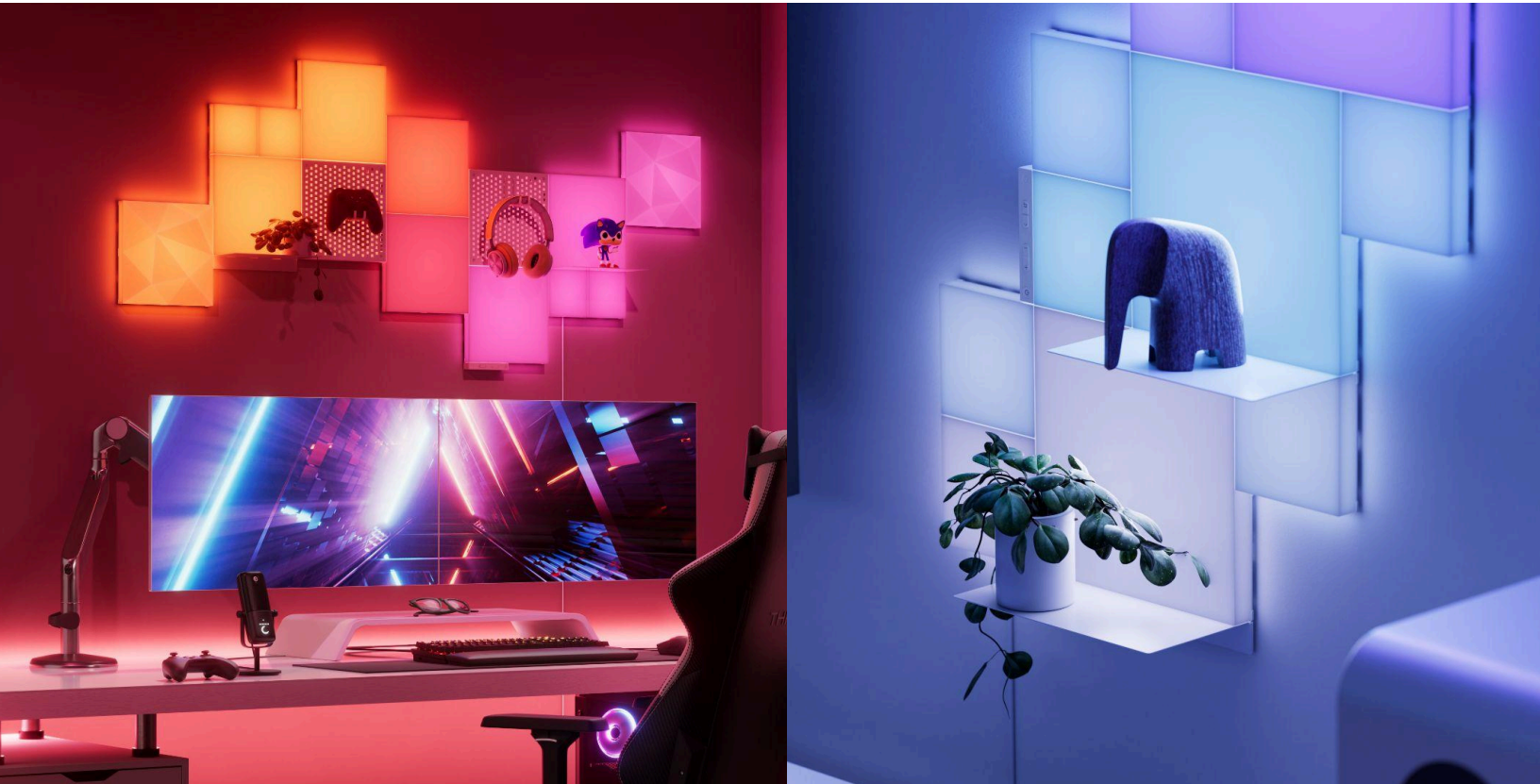


Blocks

User Manual



Welcome to Smarter Living

Congratulations on becoming an official owner of Nanoleaf Blocks! Here's a guide with everything you'll need to get started, tips for more advanced features, steps for troubleshooting, and more.

STEP 1	STEP 2	STEP 3
Physical Setup Refer to the instructions in this user manual or the ones outlined in the printed Quick Start Guide.	Download Nanoleaf App Download the Nanoleaf App on the Apple App Store or on Google Play .	Pair with Nanoleaf App Pair your Blocks with the Nanoleaf App for more customization tools.

Table of Contents

Product Setup	3
What's in the box?	3
Designing Your Layout	5
Before You Mount Your Blocks	5
Installing Squares	7
Installing Small Squares	9
Installing Light Pegboards	12
Installing Textured Squares	20
Installing Shelves	21
Uninstalling Panels	36
Pairing Your Panels for iOS	37
Pairing Your Panels for Android	38
Controlling Your Panels	39
Problems & Solutions	42
Reset Options	42
Common Solutions	42
Placement Tips	44
FAQs	44

Product Setup

What's in the box?



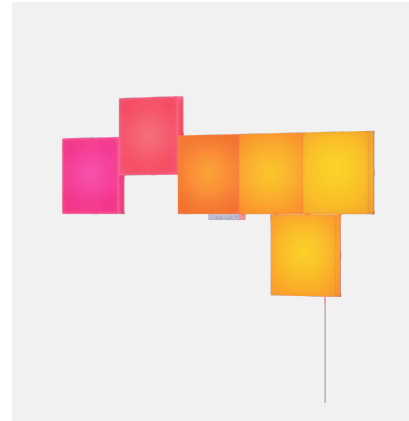
Nanoleaf Blocks
Combo XL Smarter Kit

4x Squares
4x Small Squares
1x Light Pegboard
2x Pegboard Hooks
1x Shelf
1x Shelf Cover
1x Controller
1x Power Supply
Rigid Linkers
Tape
Screws
Concrete Anchors
Drywall Anchors
Silicone Covers



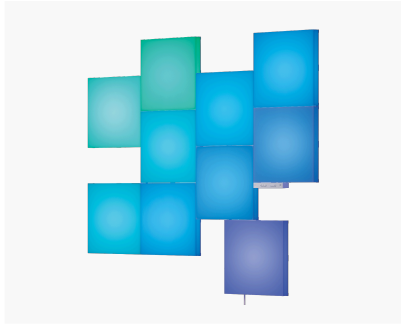
Nanoleaf Blocks
Combo Smarter Kit

3x Squares
1x Light Pegboard
2x Pegboard Hooks
1x Shelf
1x Shelf Cover
1x Controller
1x Power Supply
Rigid Linkers
Tape
Screws
Concrete Anchors
Drywall Anchors
Silicone Covers



Nanoleaf Blocks
Squares Smarter Kit

6x Squares
1x Controller
1x Power Supply
Tape
Rigid Linkers



Nanoleaf Blocks

Squares Smarter Kit

10x Squares
1x Controller
1x Power Supply
 Tape
 Rigid Linkers



Nanoleaf Blocks

Squares Add-On Kit

2x Squares
 Rigid Linkers
 Tape



Nanoleaf Blocks

Small Squares Add-On Kit

4x Small Squares
 Rigid Linkers
 Tape



Nanoleaf Blocks

Textured Squares Add-On Kit

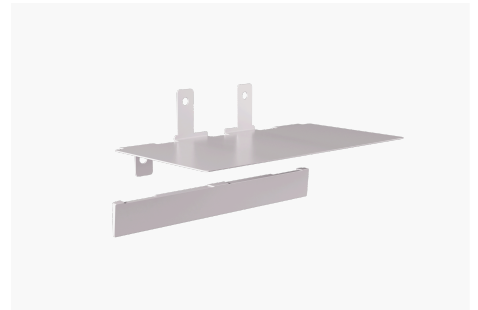
2x Textured Squares
 Rigid Linkers
 Tape



Nanoleaf Blocks

Light Pegboard Add-On Kit

1x Light Pegboard
2x Pegboard Hooks
 Rigid Linkers
 Tape
 Screws
 Concrete Anchors
 Drywall Anchors
 Silicone Cover



Nanoleaf Blocks

Shelves Add-On Kit

2x Shelves
1x Shelf Cover
 Cover Tape
 Screws
 Concrete Anchors
 Drywall Anchor

Designing Your Layout

Layout Assistant

Explore different panel layouts with the Layout Assistant. Download the Nanoleaf App and open the Layout Assistant to get started.

Design Inspiration

Get inspired by the Nanoleaf community! Check out our Social Media channels like [Instagram](#), [TikTok](#), and [X](#) to see what other Nanoleaf owners are creating.

Show Off Your Design!

Remember to share your designs with us on social media by tagging [@nanoleaf](#) and [#nanoleaf](#). Follow us to stay updated on upcoming giveaways, special promotions, and product updates.

Before You Mount Your Blocks

Mounting Order

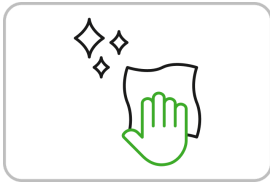
If you have different Blocks panel types in your layout, we suggest starting with a Square, Small Square or Textured Square as your first mounting piece. If you are using Blocks shelves, make sure that the panels that will surround it are mounted first. This is to help ensure a smoother set up.

Reminder: Nanoleaf Blocks Light Pegboards & Shelves need to be screw mounted.

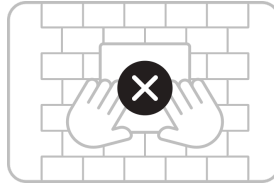
Important Installation Tips

- Make sure to test your panels by connecting all of them to the power supply before starting installation. If any problems occur, reach out to our customer support [here](#).
- If you have Light Pegboards and/or Shelves in your planned layout, please go over the installation steps before you begin mounting your panels to ensure a smooth setup process.

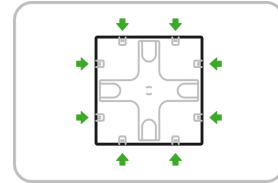
- If Shelves are part of your layout, please make sure you install light panels before your Shelf.



Clean your surface to be free of dust and moisture

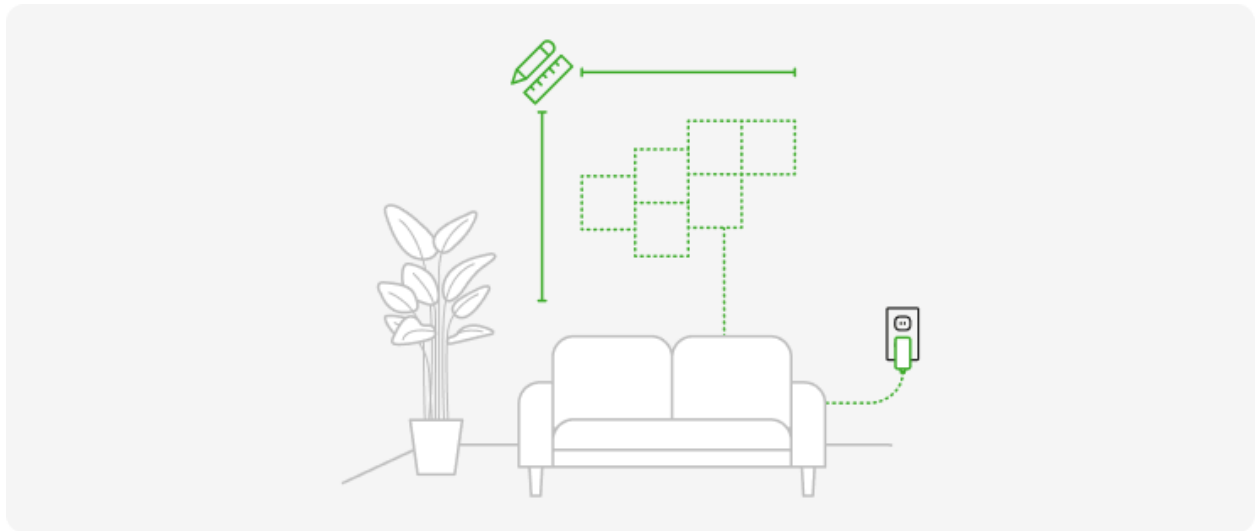


IMPORTANT: Tape is not suitable for textured, porous, popcorn, and ceiling surfaces



The Power Supply and Controller can be connected to any linker slot.

Plan Your Layout



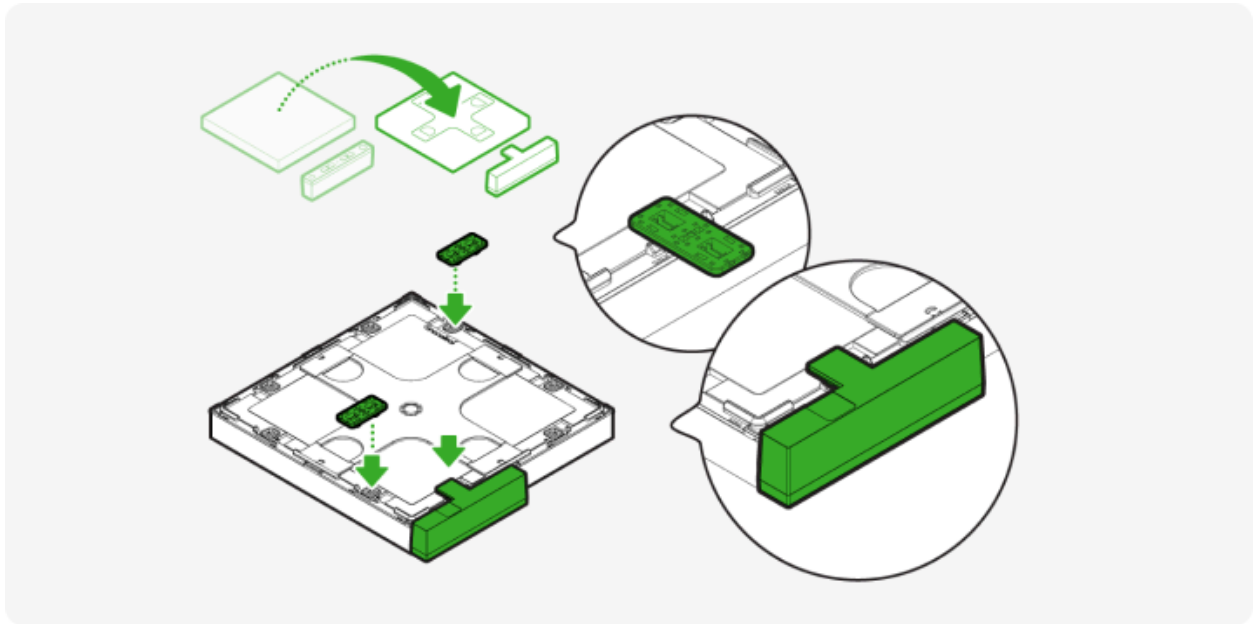
Plan your layout before mounting any panels onto the wall. You can lay them on the ground first, and connect them all together to check that each panel lights up.

You can also use the Layout Assistant on the Nanoleaf app to build your layout before you set it up on the wall.

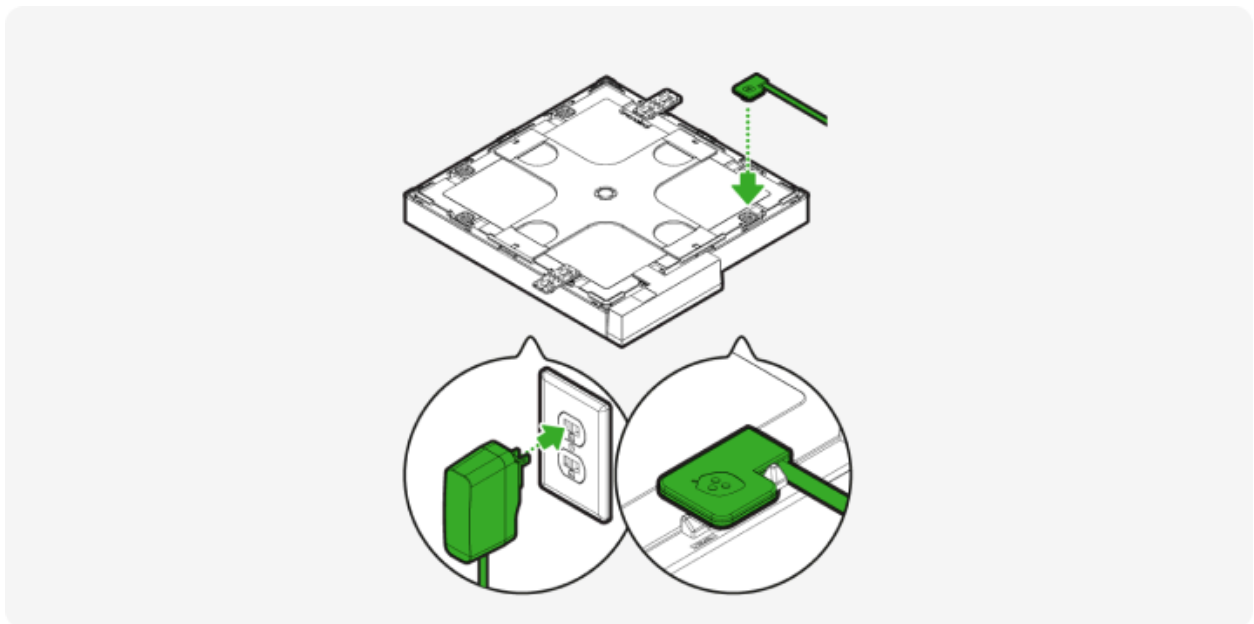
Installing Your Blocks

01 | Installing Squares

- 1) Designate a panel from your setup as the starting panel. Attach the controller and all needed linkers.

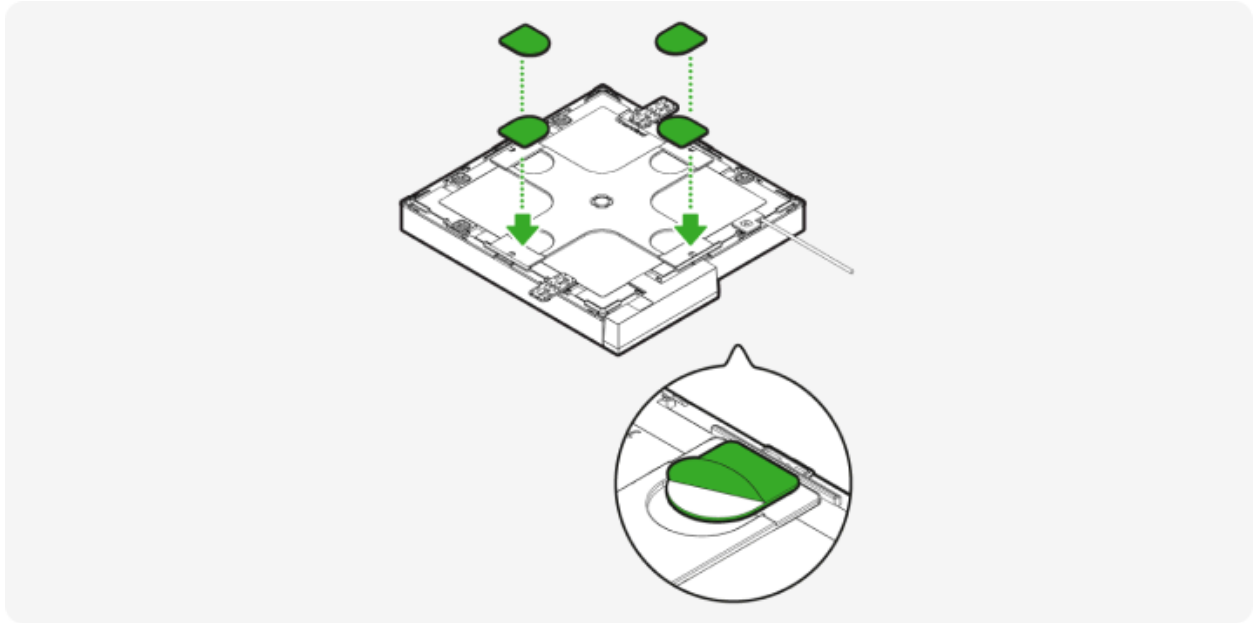


- 2) Connect your Power Supply Unit and plug the other end into a power source to ensure that your setup is on as you continue to connect your panels together.

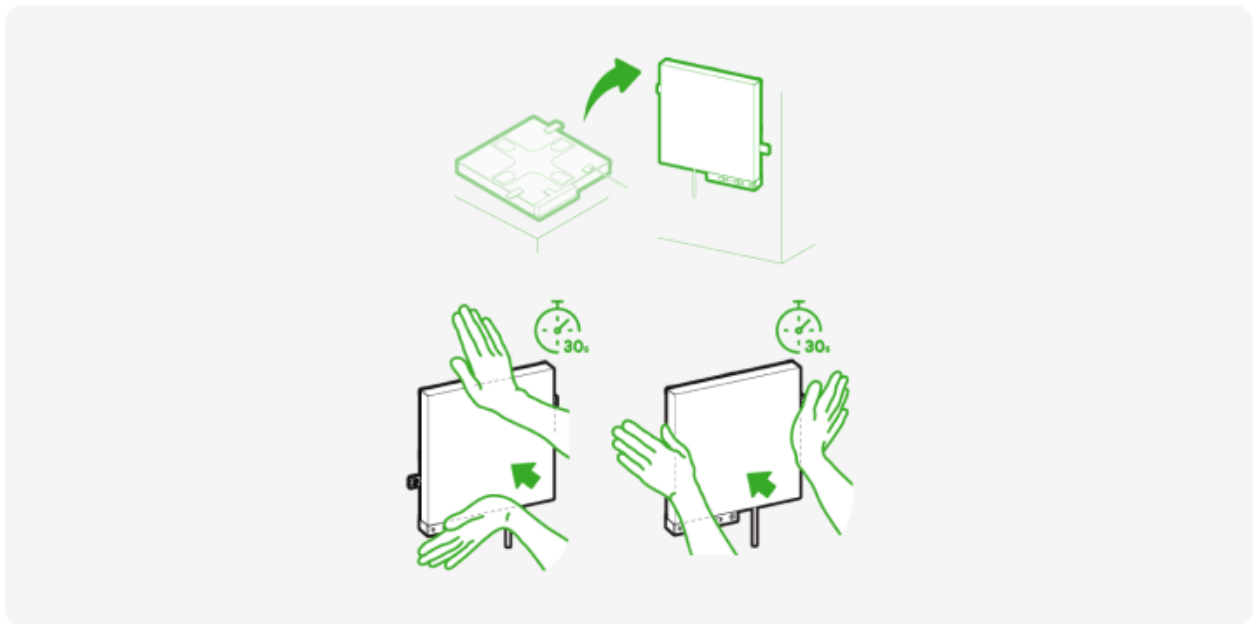


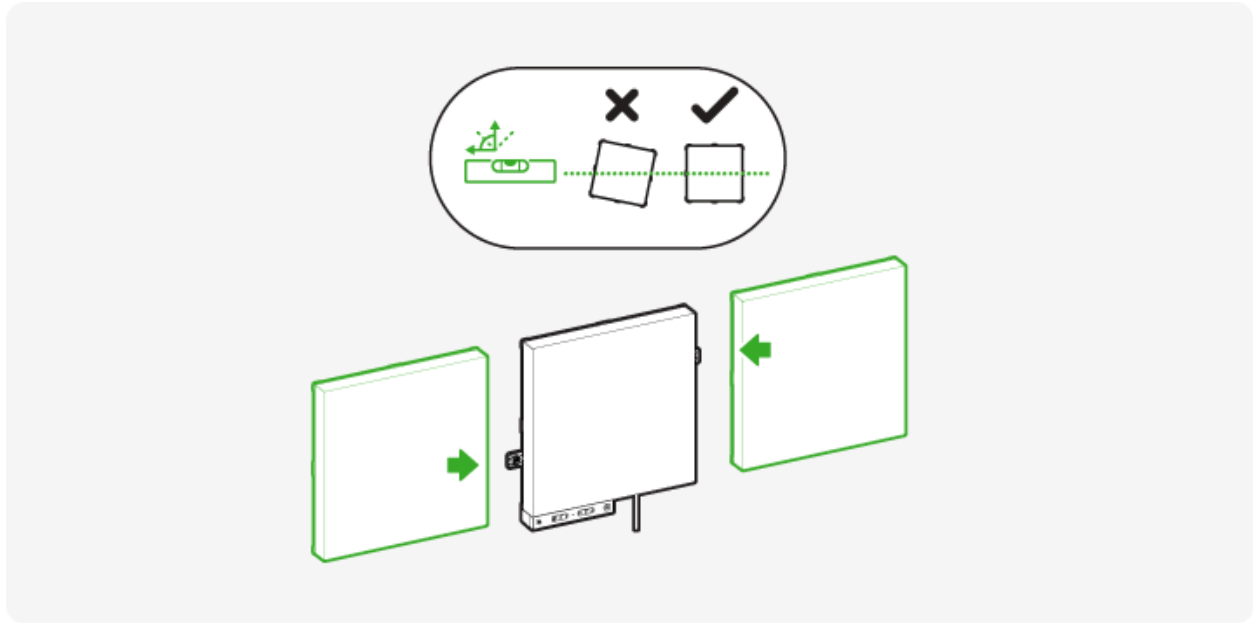
- 3) Attach mounting tape to the back of the panel and remove the protective liners.

Note: Before mounting your first panel, make sure the round end of the tape overhangs the opening in the mounting plate. This will allow you to safely remove them later from the wall.



- 4) If this is the first panel in your layout, use a level to check that the panel is straight while you mount it. Mount your panel by applying strong pressure for 30 seconds to each side of the panel. This will ensure the tape firmly adheres to the wall.



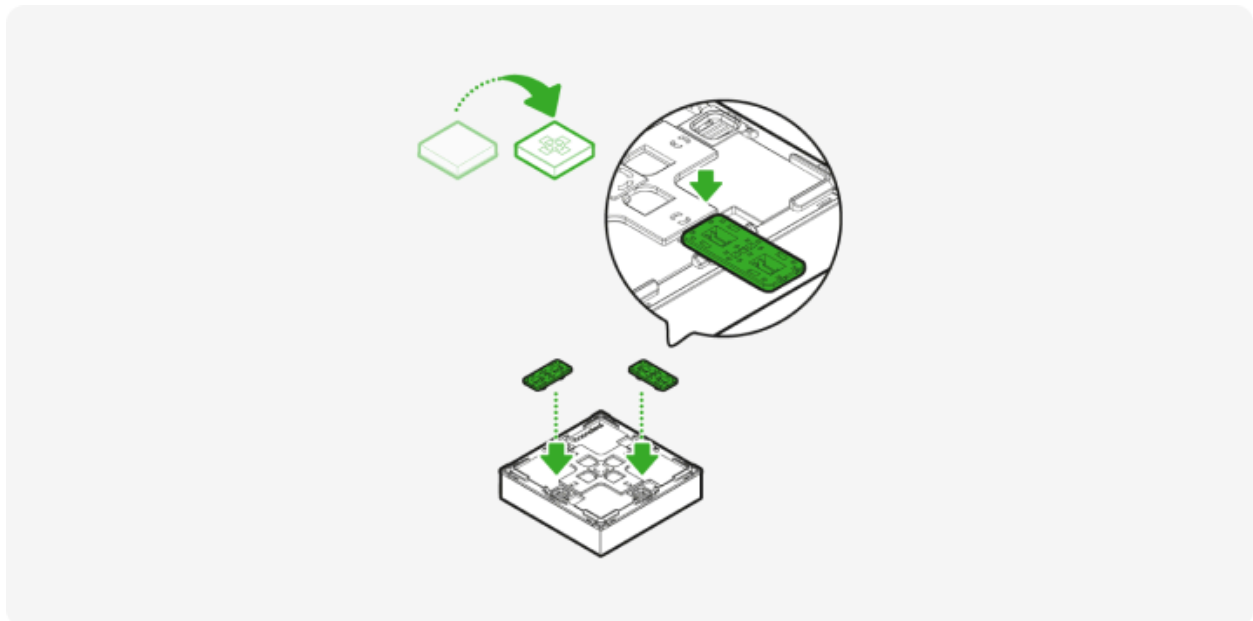


TIP: Squares have 2 linker slots per side, allowing for offset connections.

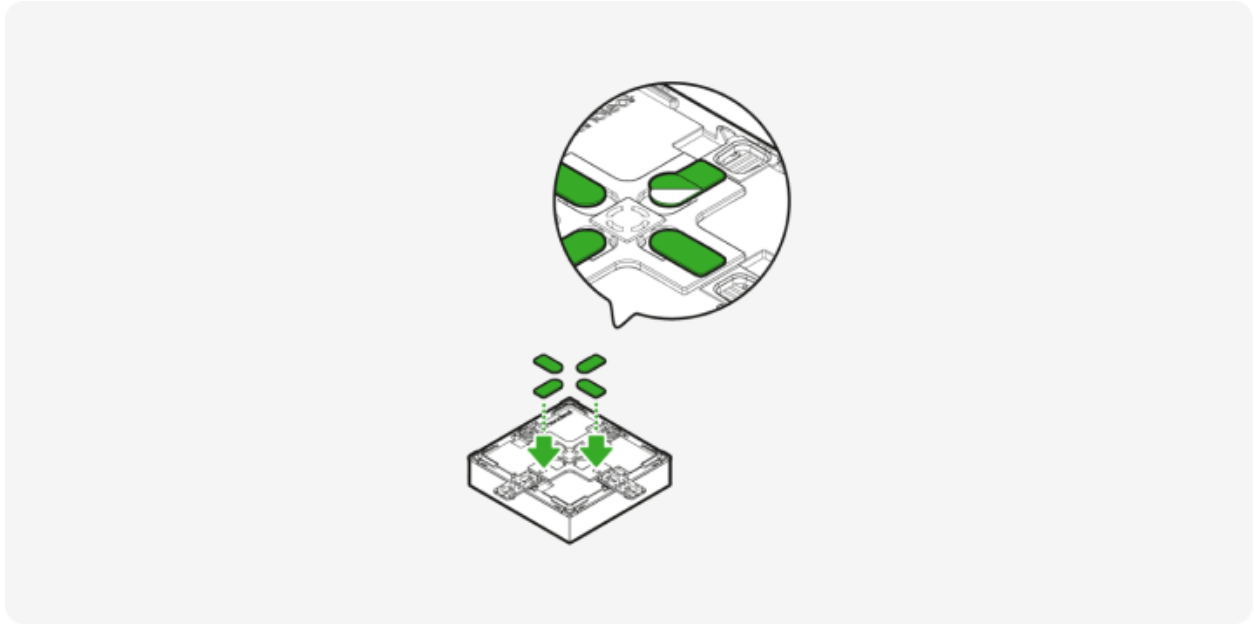
5) Continue with the same process for the rest of your panels in your layout.

02 | Installing Small Squares

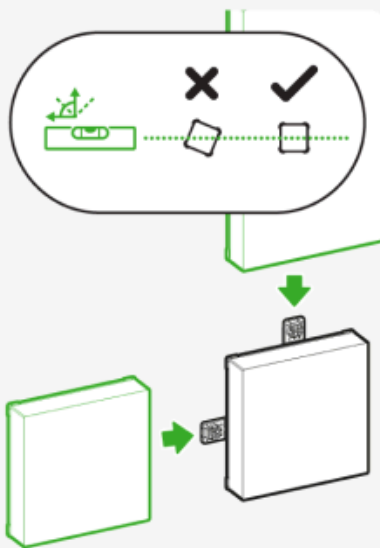
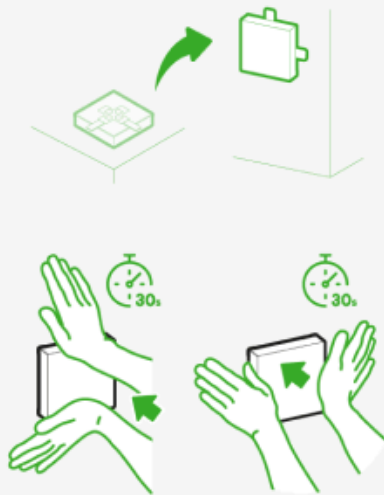
1. Add rigid linkers into the available linker slots as needed.



2. Attach mounting tapes to the back of the panel. Ensure the round end of the tape overhangs the opening in the mounting plate. This will allow you to safely remove them later from the wall.
3. Remove the protective liners.



4. Mount your panel by applying strong pressure for 30 seconds to each side of the panel. This will ensure the tape firmly adheres to the wall.

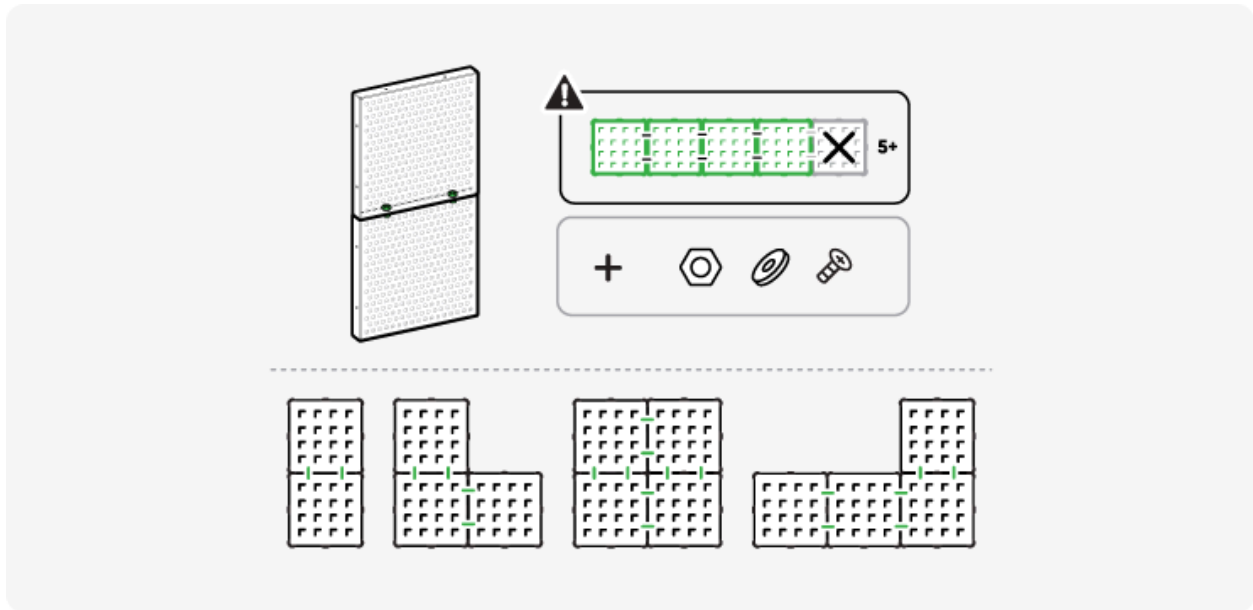


5. Follow the same instructions when mounting the rest of your Small Square panels.

03 | Installing Light Pegboards

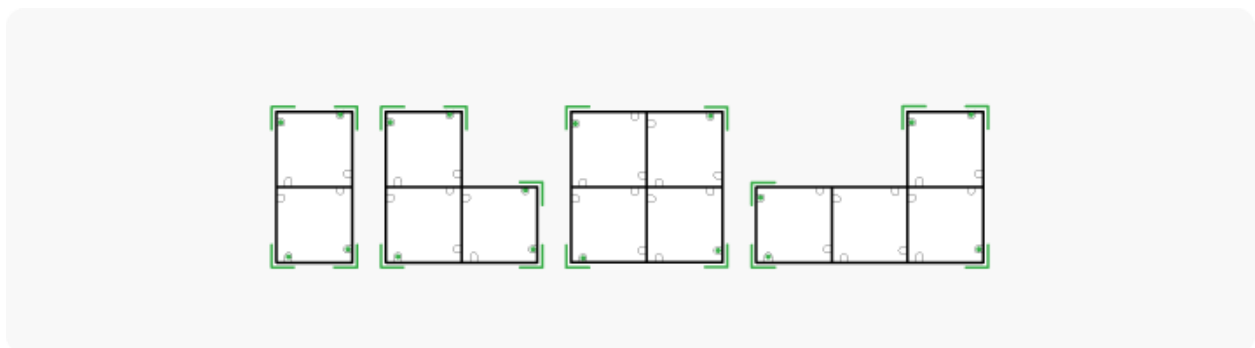
IMPORTANT: You can have multiple light pegboards in one layout, but we suggest a max grouping (cluster) of 4 for a more stable and secure installation.

A single pegboard has a weight bearing capacity of 3kg (6.6lbs).



You can also reduce the number of screws on your wall by only screw mounting the outer corners of your pegboard cluster. This is only applicable for smaller clusters (max 4).

Here are some examples of pegboard clusters and the corners (marked in green) that would need to be screwed into the wall.

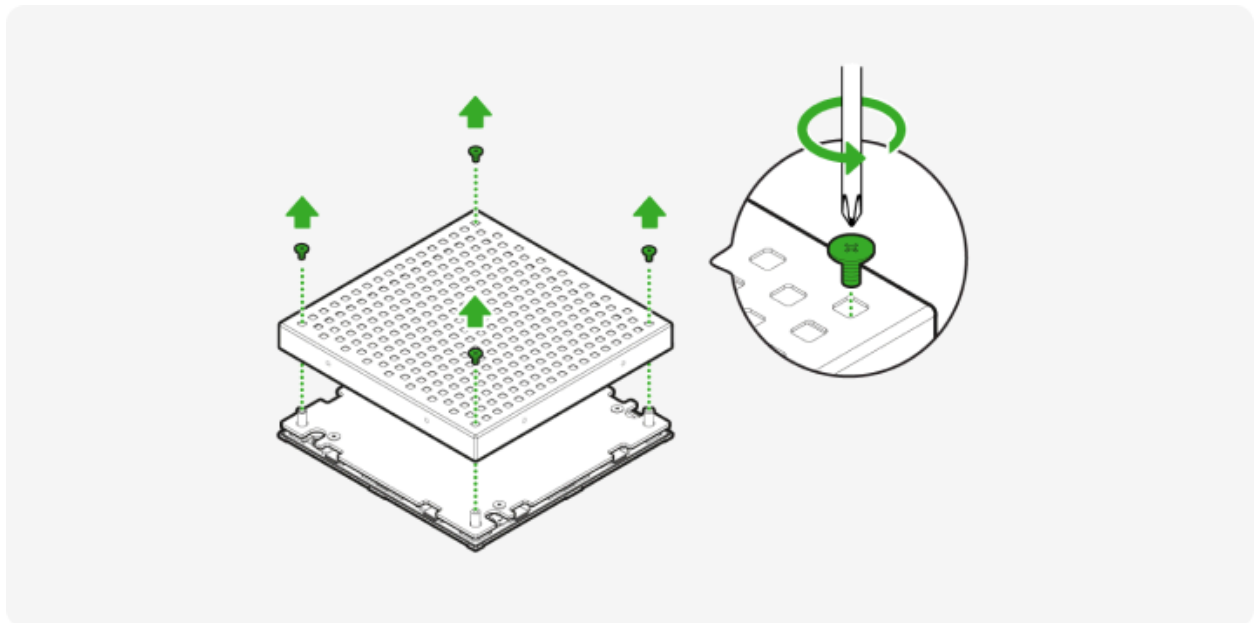


If you have more than 5 pegboards in your layout, we suggest spreading them out or grouping them in smaller clusters (max 4).

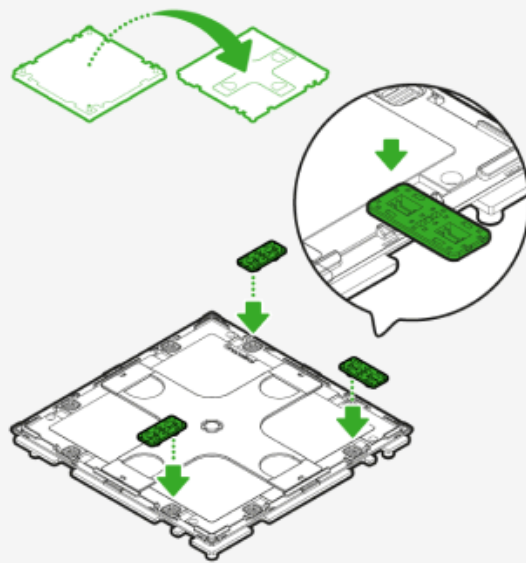
If you need to have 5 or more pegboards in a cluster, you must screw-mount all four corners of **each** pegboard.

Mounting Light Pegboards

1. Unscrew the pegboard cover from the back panel with a screwdriver. Keep the screws for a later step.

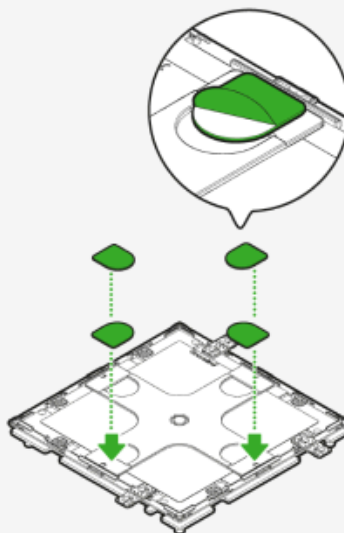


2. Add rigid linkers into the available linker spots as needed.

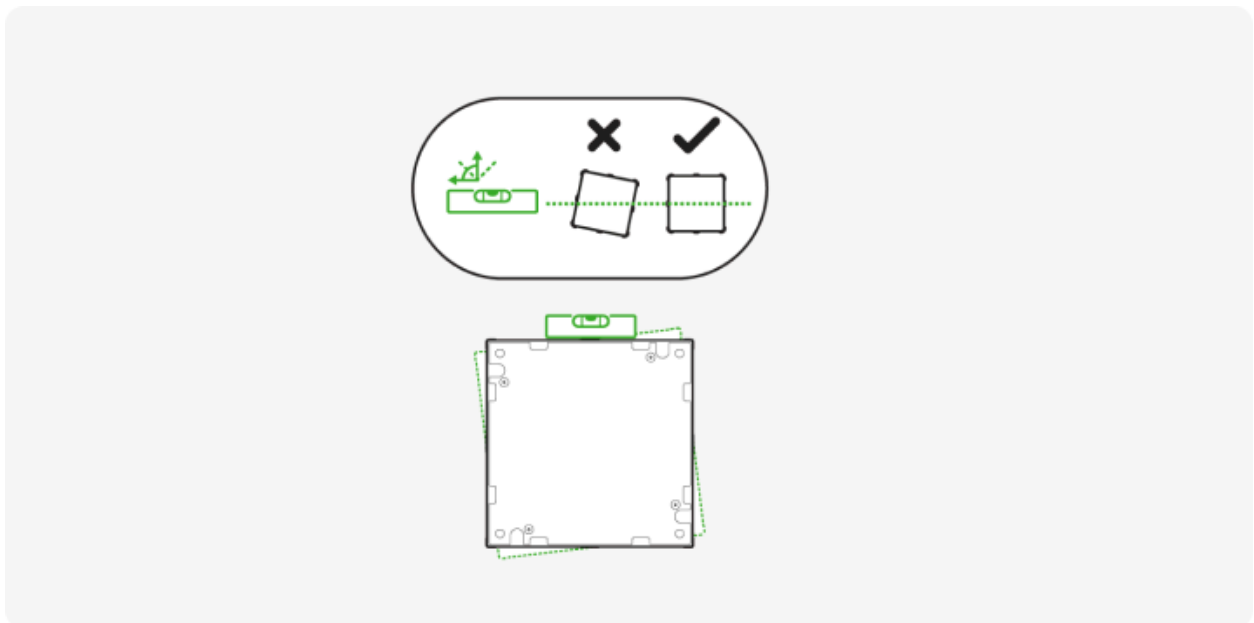
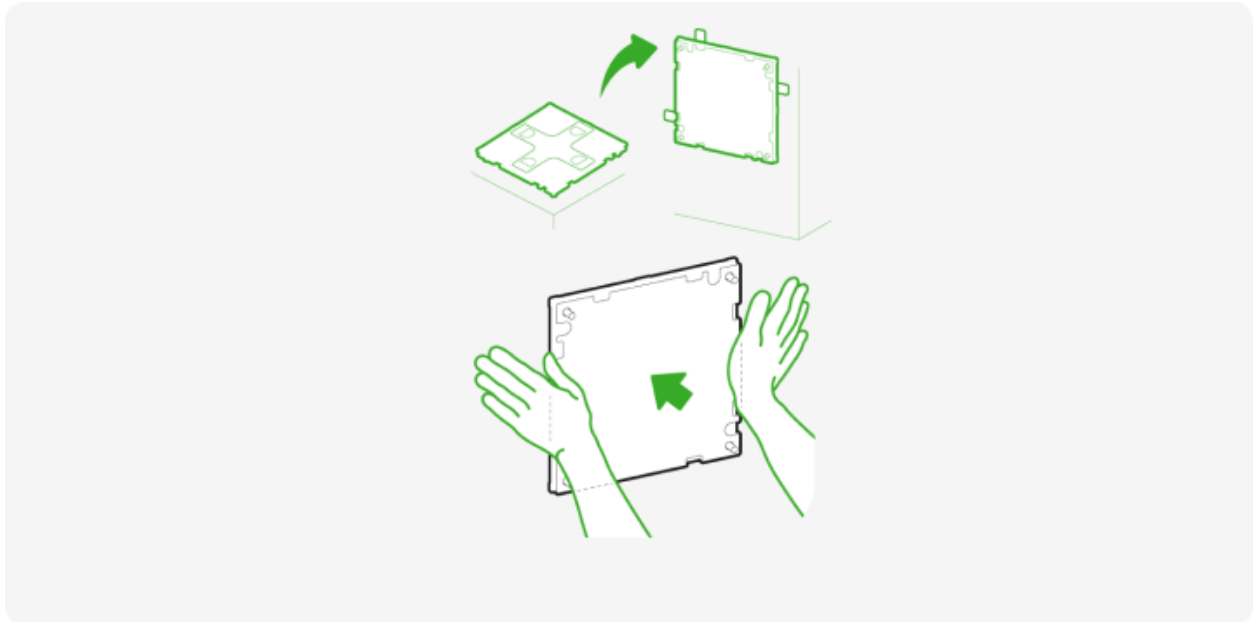


IMPORTANT: Ensure that all linkers that are needed for your layout are securely snapped into the pegboard as it will be difficult to add more later.

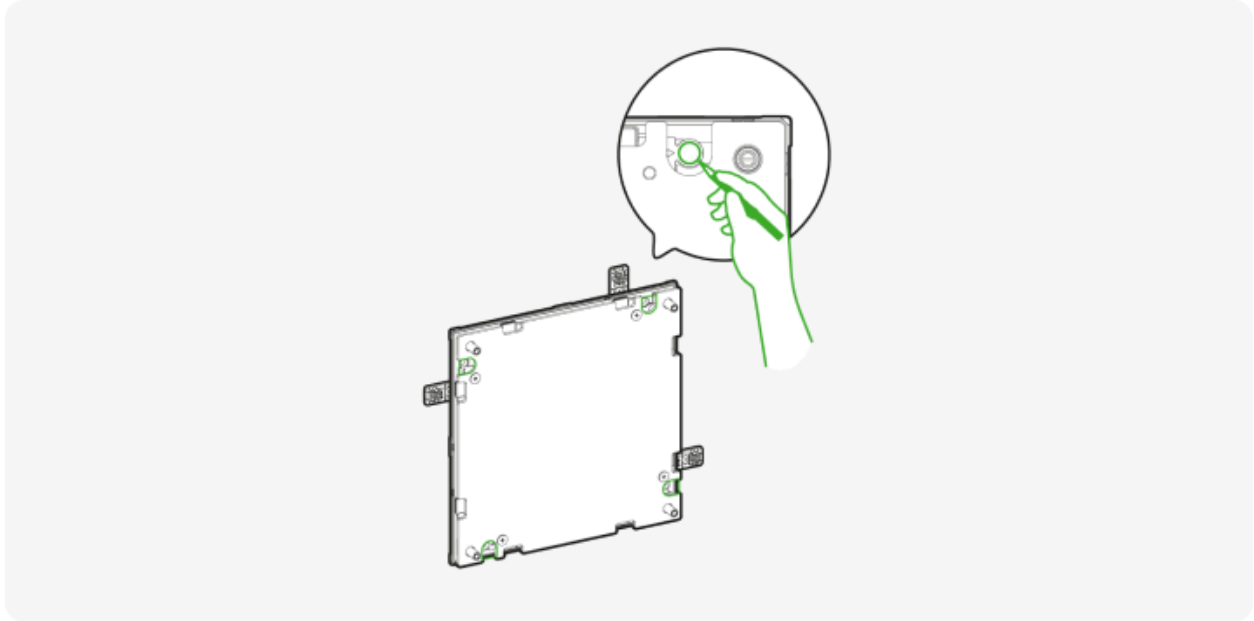
3. Attach mounting tapes to the back of the panel. Ensure the round end of the tape overhangs the opening in the mounting plate. This will allow you to safely remove them later from the wall.
4. Remove the protective liners.



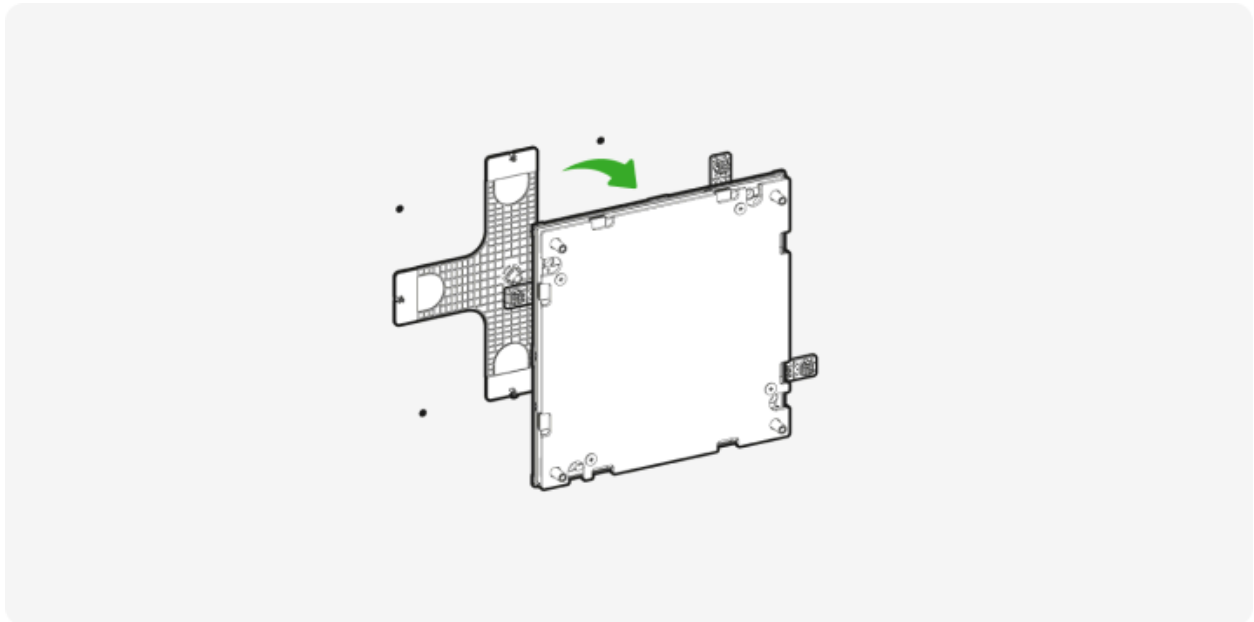
5. Mount the back panel of your pegboard by applying strong pressure for 30 seconds to each side of the panel. This will ensure the tape firmly adheres to the wall. You can use a lever to help ensure your panels are straight.



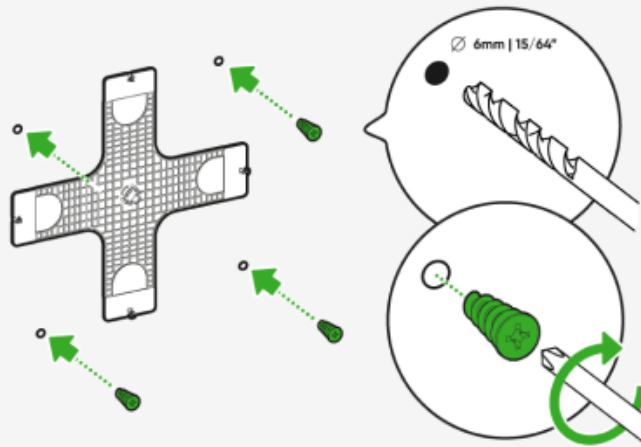
6. Mark the holes on each corner of the back panel (shown in image) with a pencil - this is where the anchors will go.



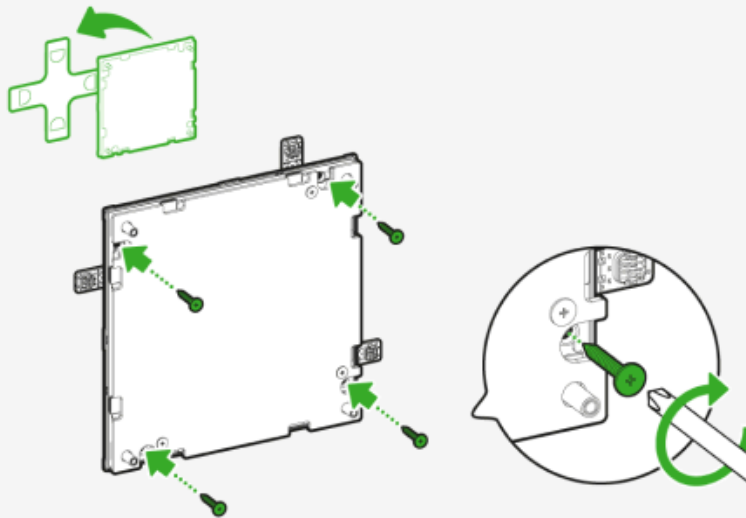
7. Pull off the back panel gently, leaving just the mounting plate attached to the wall.



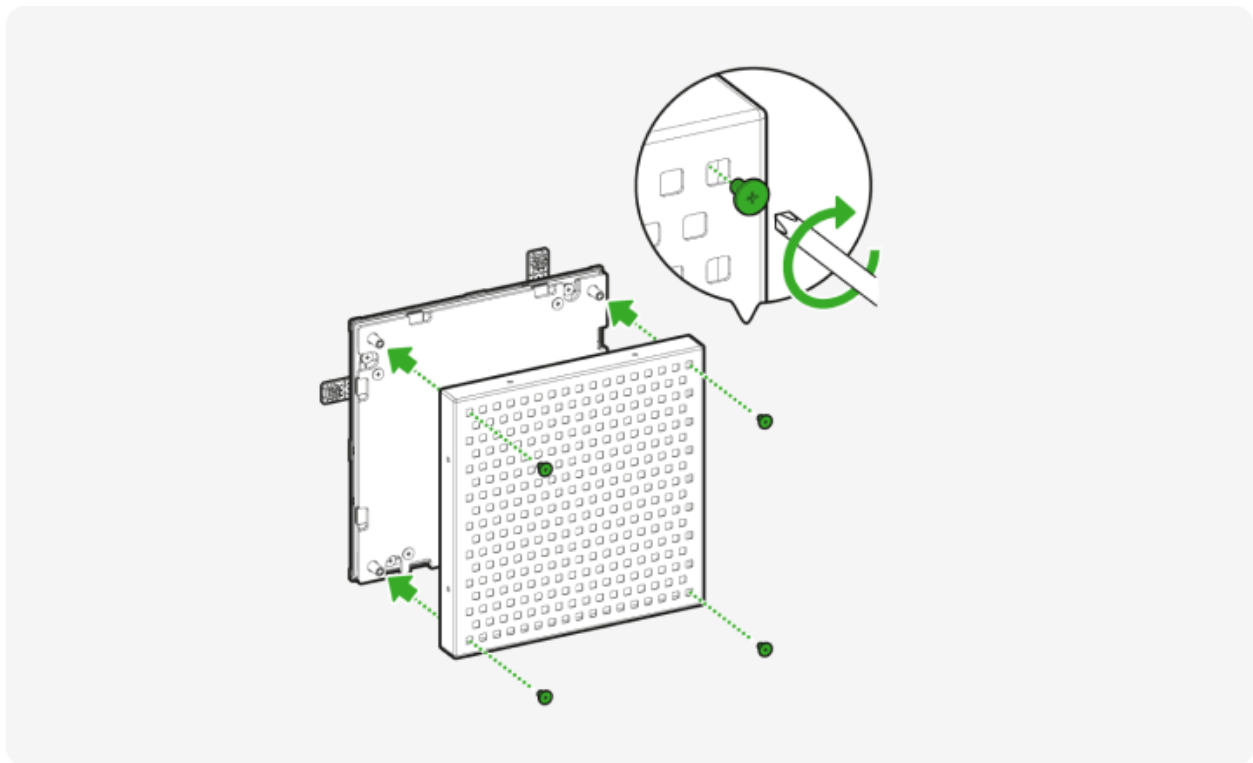
8. Drill holes into the marked areas on the wall.
9. Screw anchors into the drilled holes. For concrete walls, use concrete anchors. For drywalls, use drywall anchors.



10. Reattach the back panel to the mounting plate. Use a screwdriver or drill to drive the pointed screws into the anchors, securing the back panel in place.



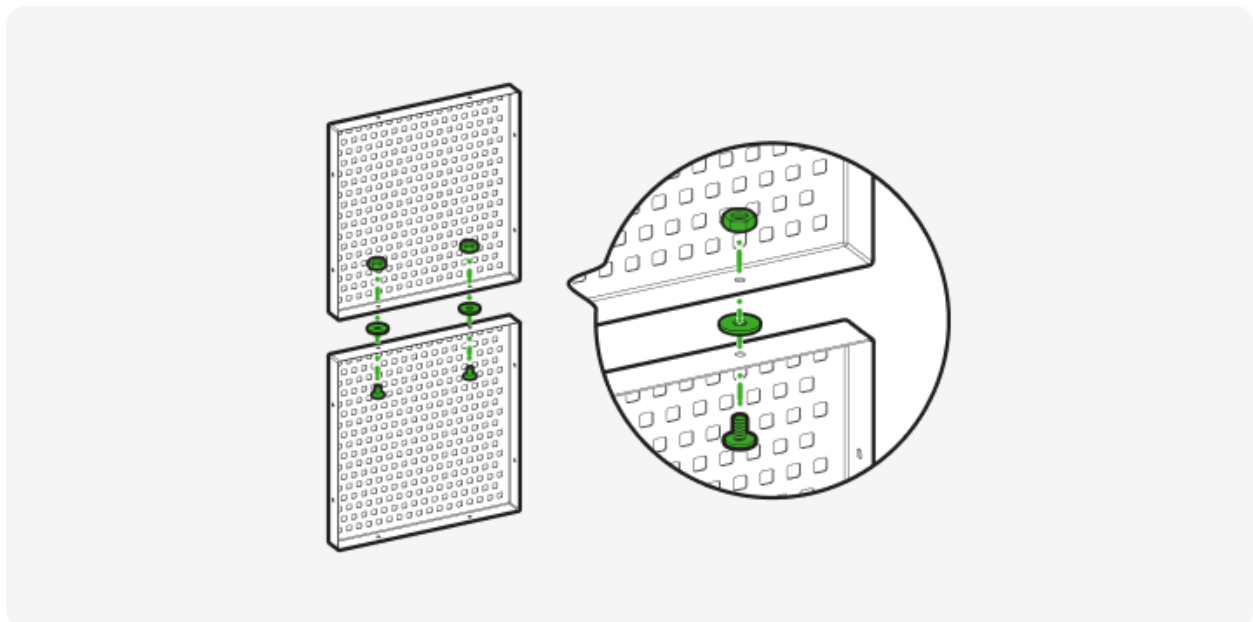
11. Place the pegboard cover back onto the back panel and secure it in place using the screws saved from step one.



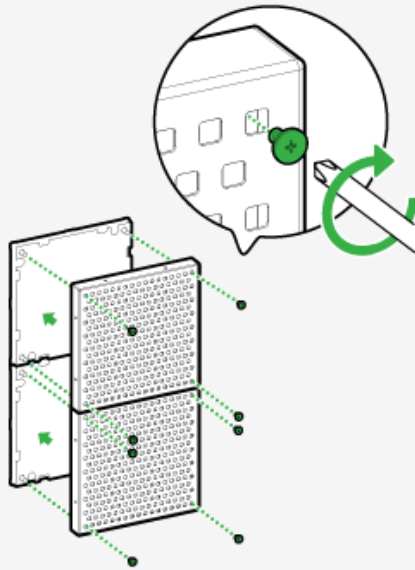
Connecting Multiple Pegboards in a Cluster

Skip to Step 14 if you do not have pegboard clusters in your layout.

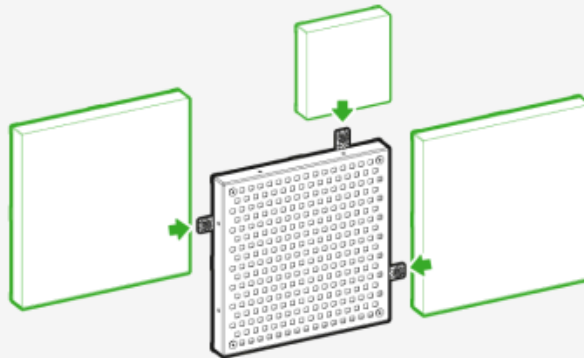
12. Connect pegboard covers using the silver pegboard screws, washers, and hex nuts.



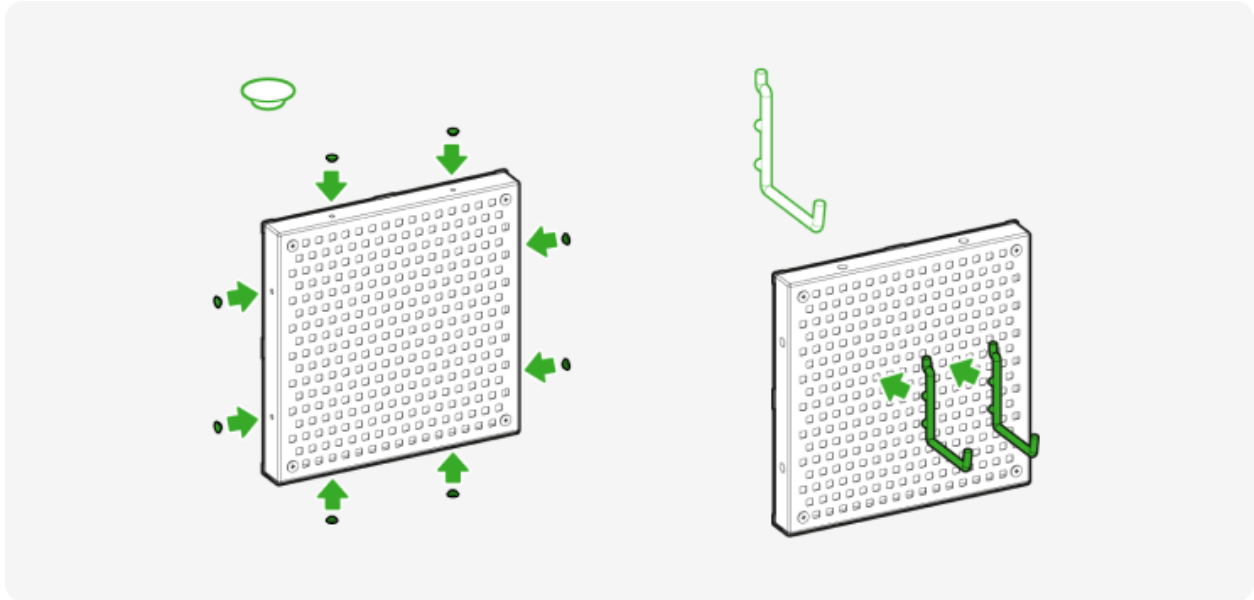
13. Attach the connected Light Pegboard covers onto the back panels. Screw all the white Light Pegboard screws back in, as shown in the image.



14. Continue to link your other panels together and ensure that each panel lights up. Remember to attach all needed linkers before you mount the next panel to the wall.



15. After you have finished your layout, add silicone covers around the perimeter of the pegboard to cover any open holes.
16. Attach pegboard hooks to store objects on the pegboard (up to 3kg max.). Fit the pegboard hooks into the slots and then pull down to lock them in place.



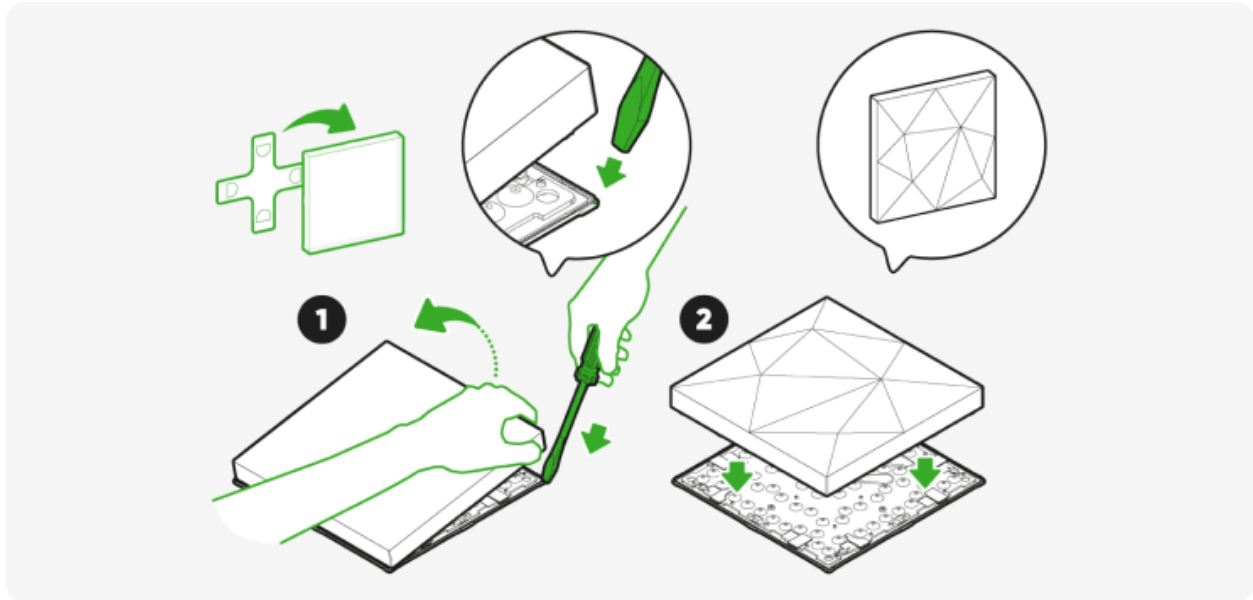
04 | Installing Textured Squares

The difference between Squares and Textured Panels is just in the diffuser cover! To set up your Textured Panels, follow the same installation steps as with **Squares**.

TIP: Rotate your Textured Squares to change up the orientation of the 3D design.

Optional: Swapping Diffusers

If desired, you can swap the diffusers between Squares and Textured Square Panels. Look for the small notch at the corner of the panel, and using a flathead screwdriver, pull the diffuser off, and replace it with the diffuser of your choice.



05 | Installing Shelves

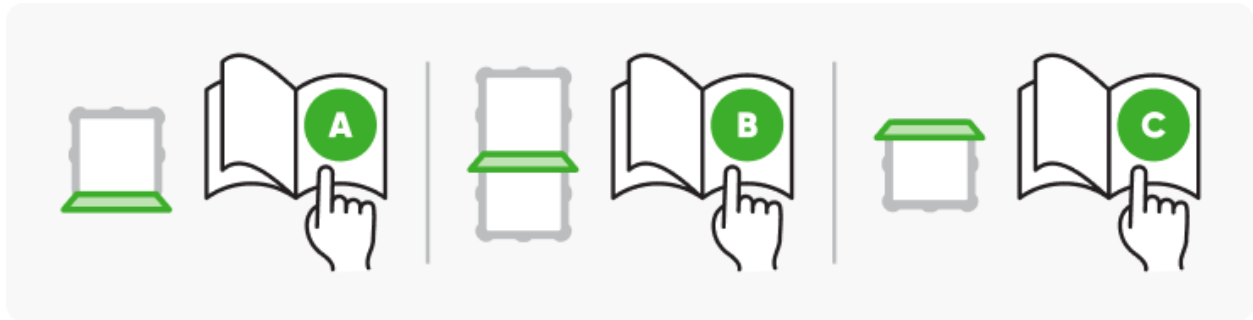
IMPORTANT:

- Each shelf has a weight bearing capacity of 1.5kg (3.3lbs)
- Panels should always be mounted before shelves



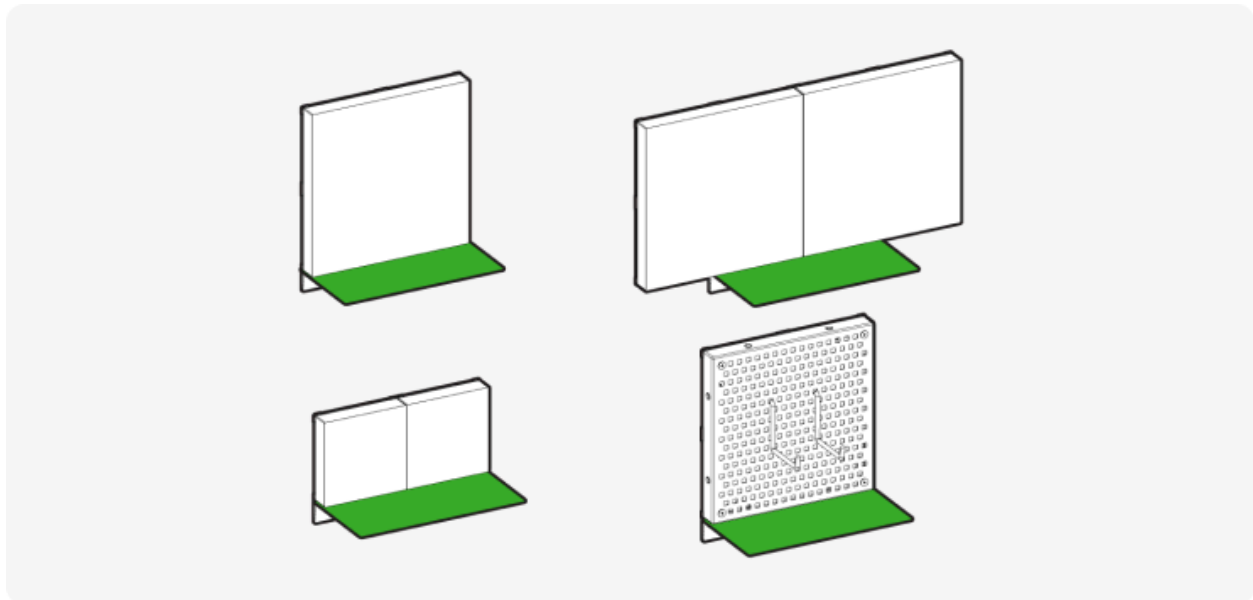
Choose the appropriate shelf installation method based on where your shelf sits in your layout relative to other Blocks panels.

- If your shelf will sit **below** a panel, refer to Installation Method A
- If your shelf will sit in **between** two panels, refer to Installation Method B
- If you shelf will sit **above** a panel, refer to Installation Method C

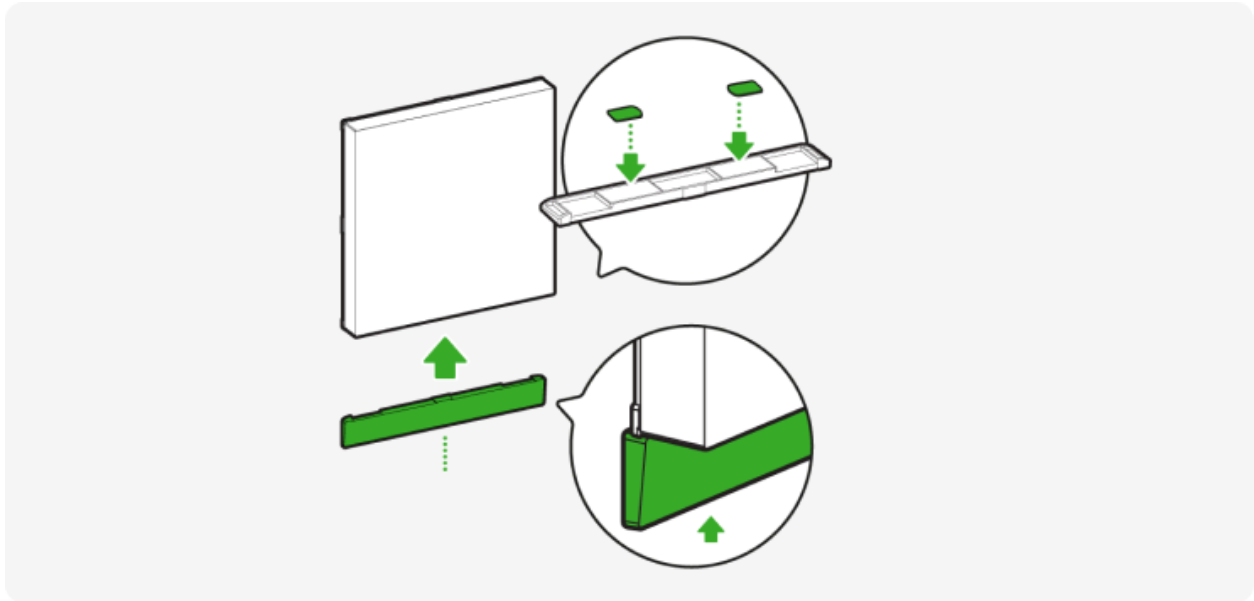


Shelf Installation Method A

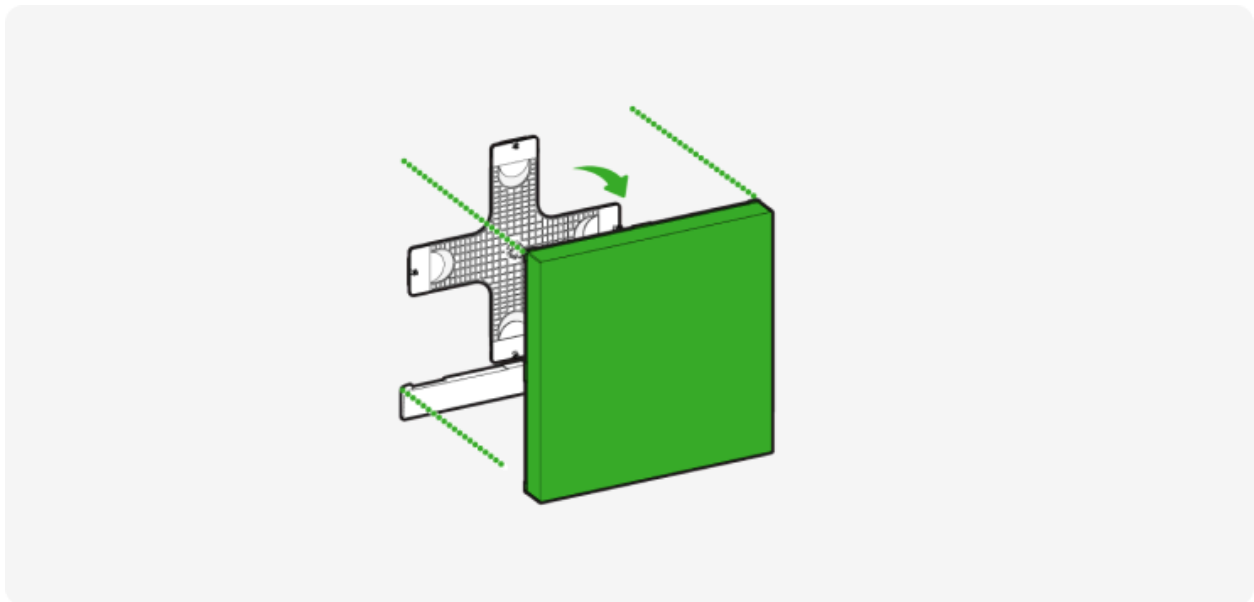
Method A: For shelf installations at the bottom of a layout. Use this method if no panels will be placed underneath your shelf.



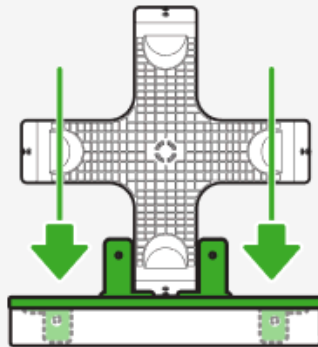
1. Add shelf cover mounting tape to the back of your shelf cover. Remove the protective liner from the tape and mount the shelf cover directly underneath the light panel you will be installing your shelf below. Ensure that there are no gaps in between.



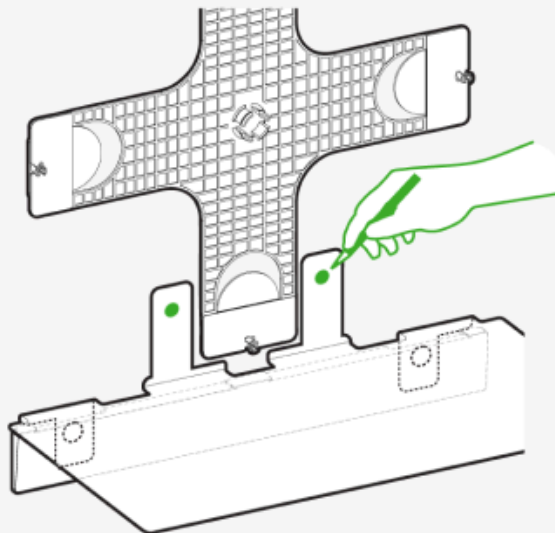
2. Pull off the light panel gently, leaving the mounting plate and shelf cover attached to the wall.

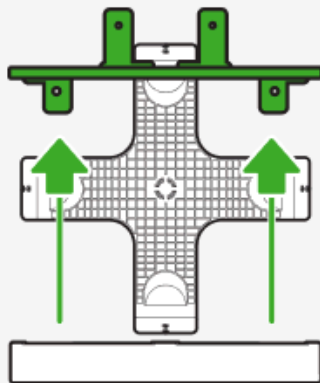


3. Slide the short prongs of the shelf into the shelf cover.

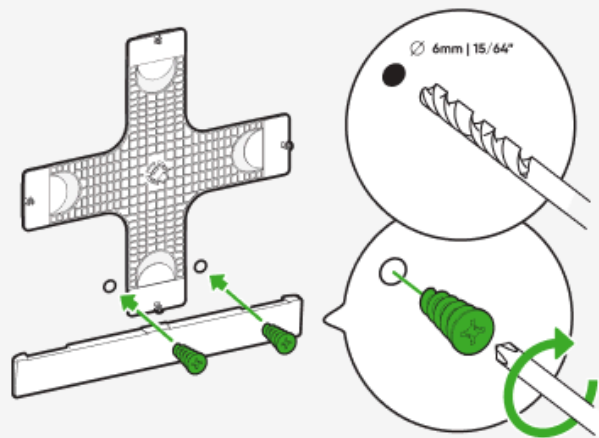


4. Use a pencil to mark the two top holes in the shelf - this is where the anchors will go.
5. Slide the shelf out from the shelf cover.

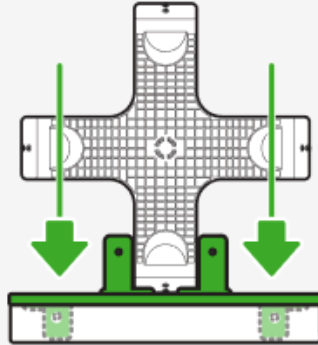




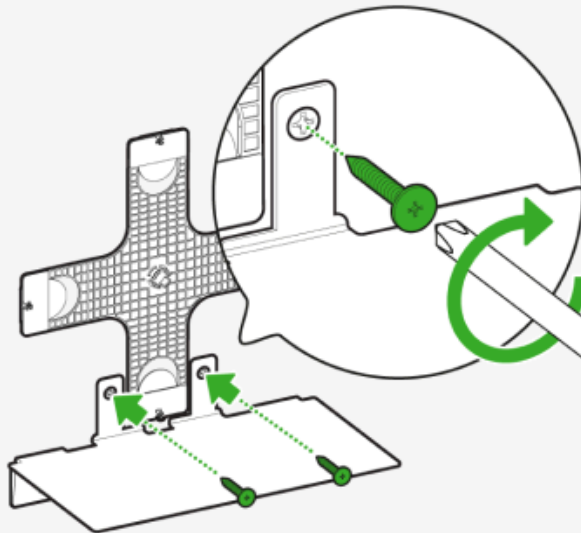
6. Drill holes into the marked areas on the wall.
7. Screw anchors into the drilled holes. For concrete walls, use concrete anchors. For drywall, use drywall anchors.



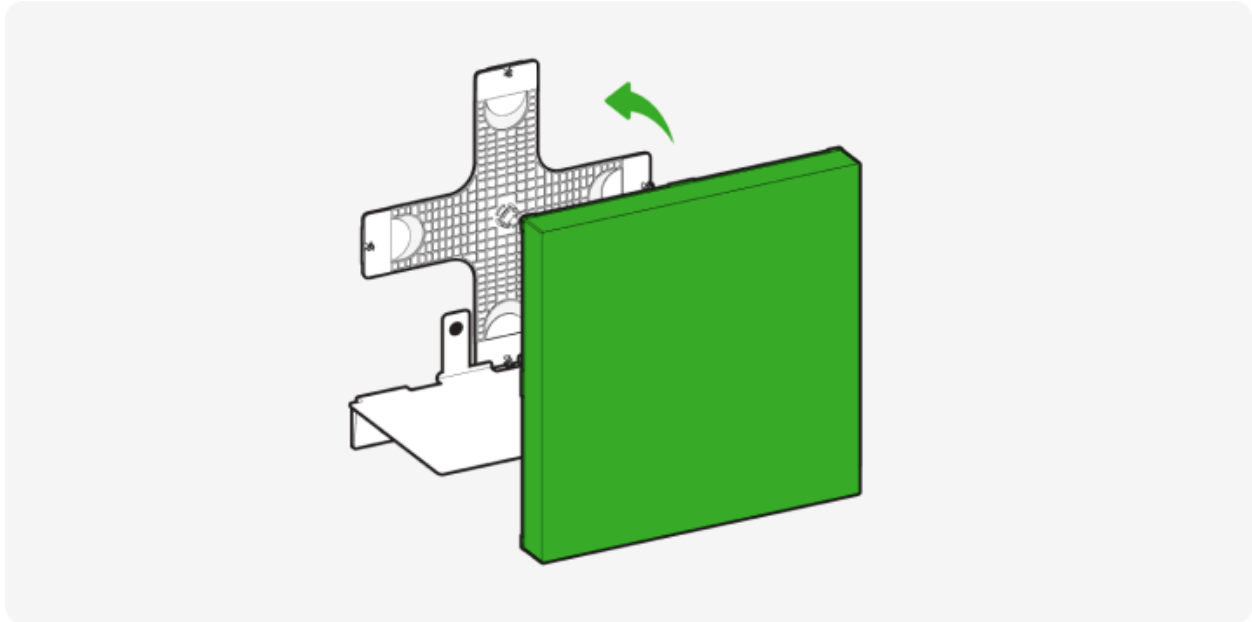
8. Place the shelf back into the shelf cover



9. Drive the screws into the anchors, securing the shelf in place. Ensure that the screws are driven in all the way so they do not interfere with your layout.

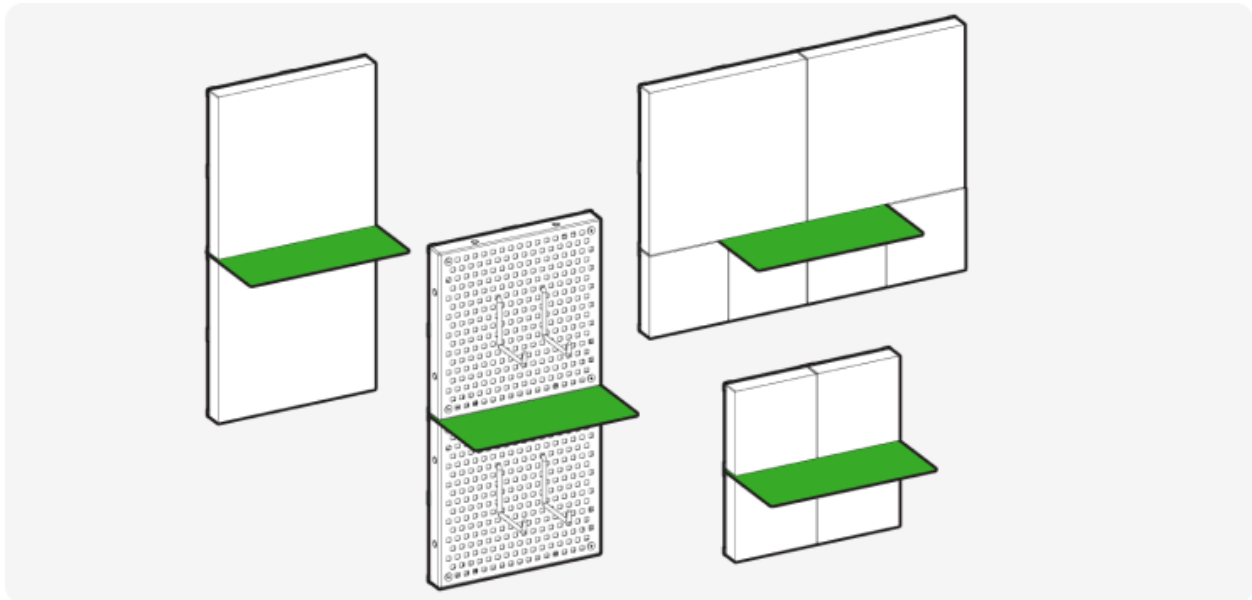


10. Reattach the light panel back onto its mounting plate.

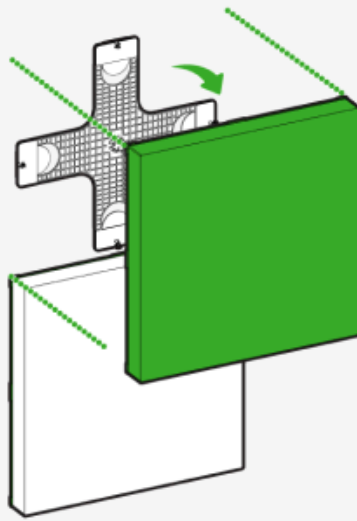


Shelf Installation Method B

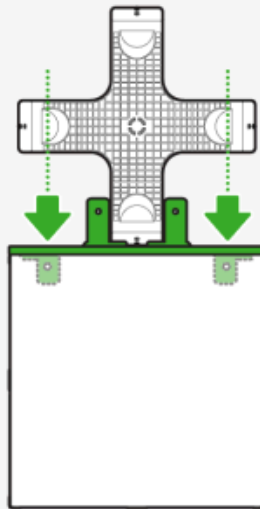
Method B: For shelf installations in between panels. Use this method if there will be panels installed above and below your shelf.



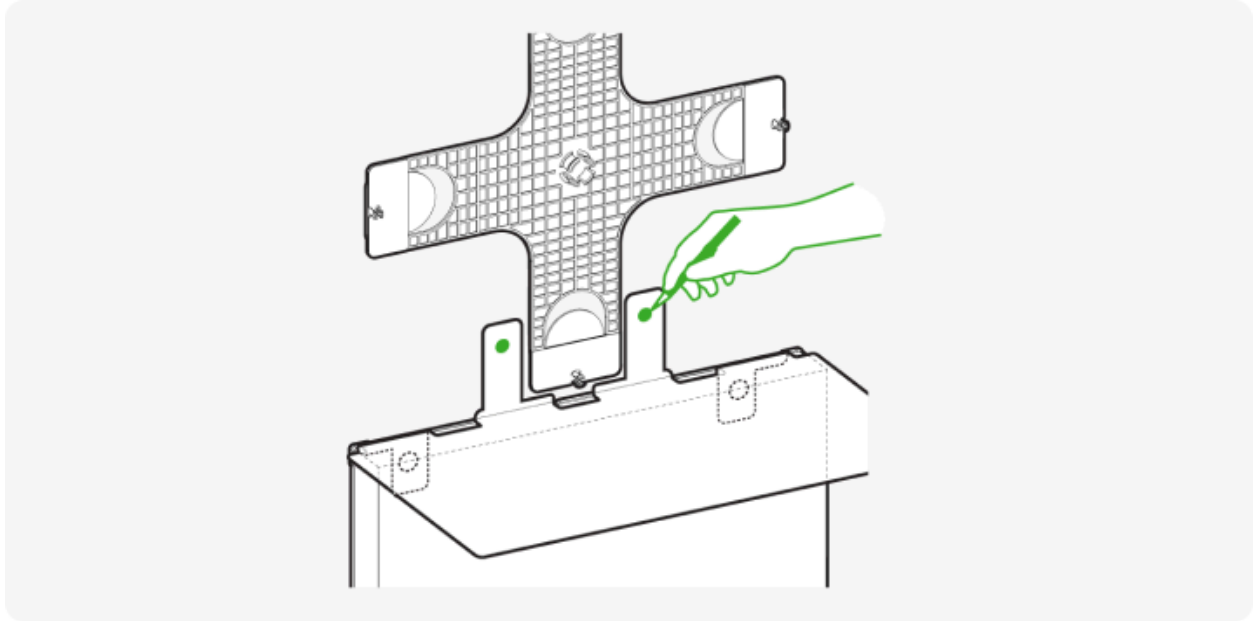
1. Pull off the top panel gently, leaving the mounting plate attached to the wall.



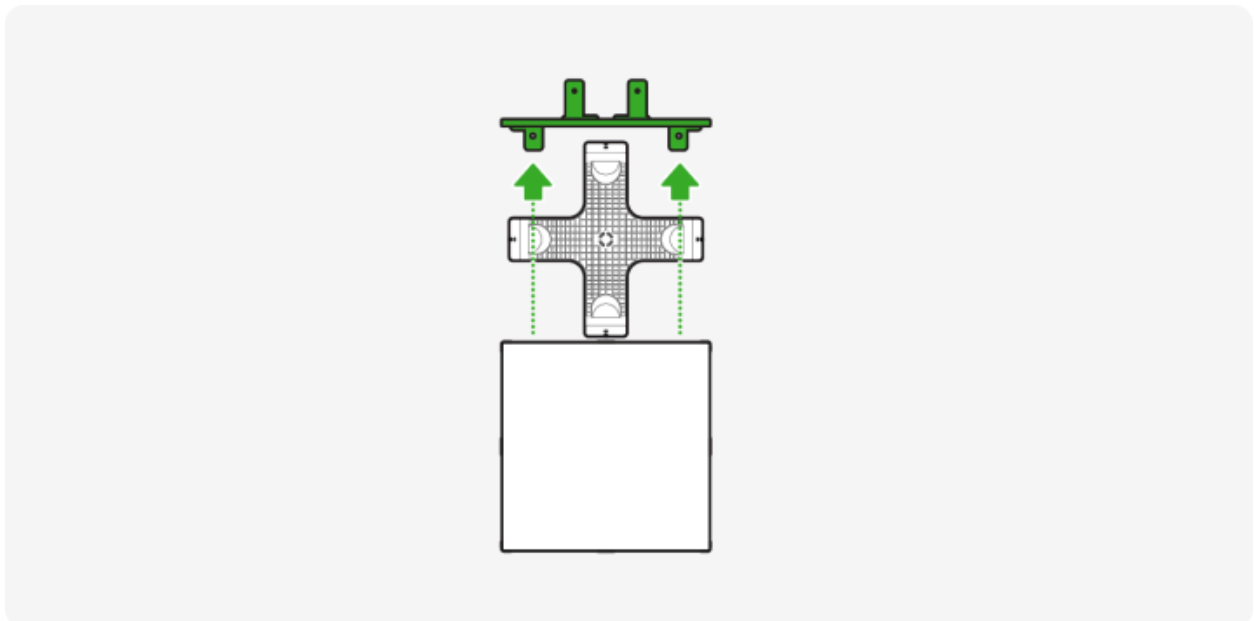
2. Slide the short prongs of the shelf into the top of the bottom panel.



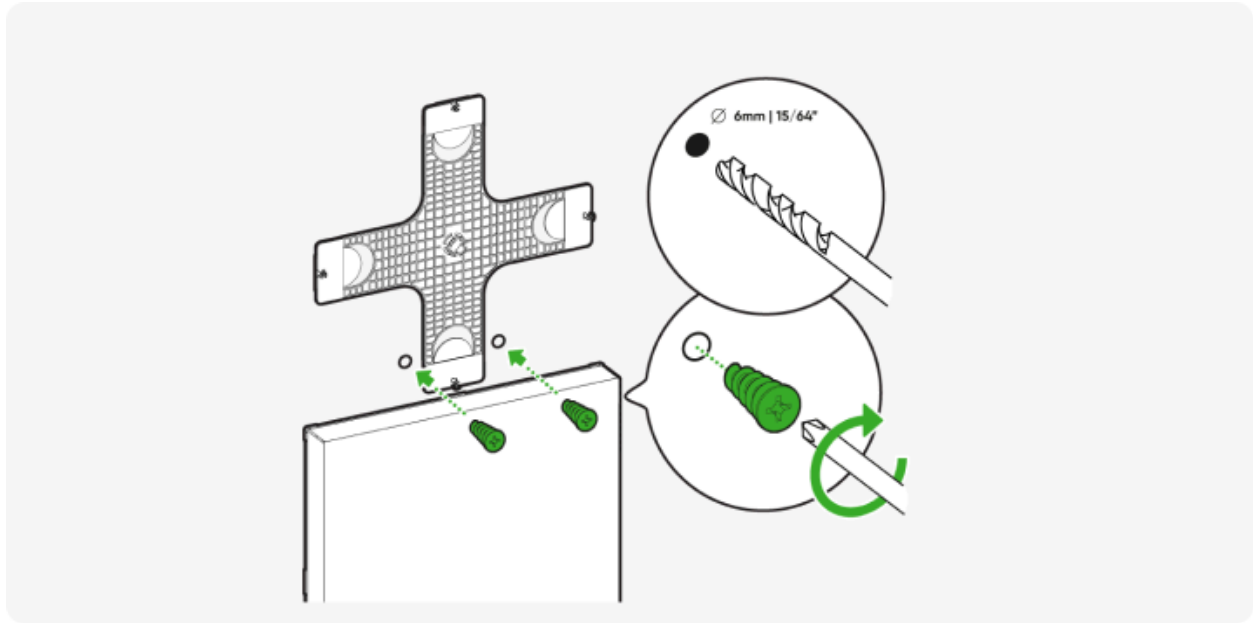
3. Use a pencil to mark the top two holes of the shelf – this is where the anchors will go.



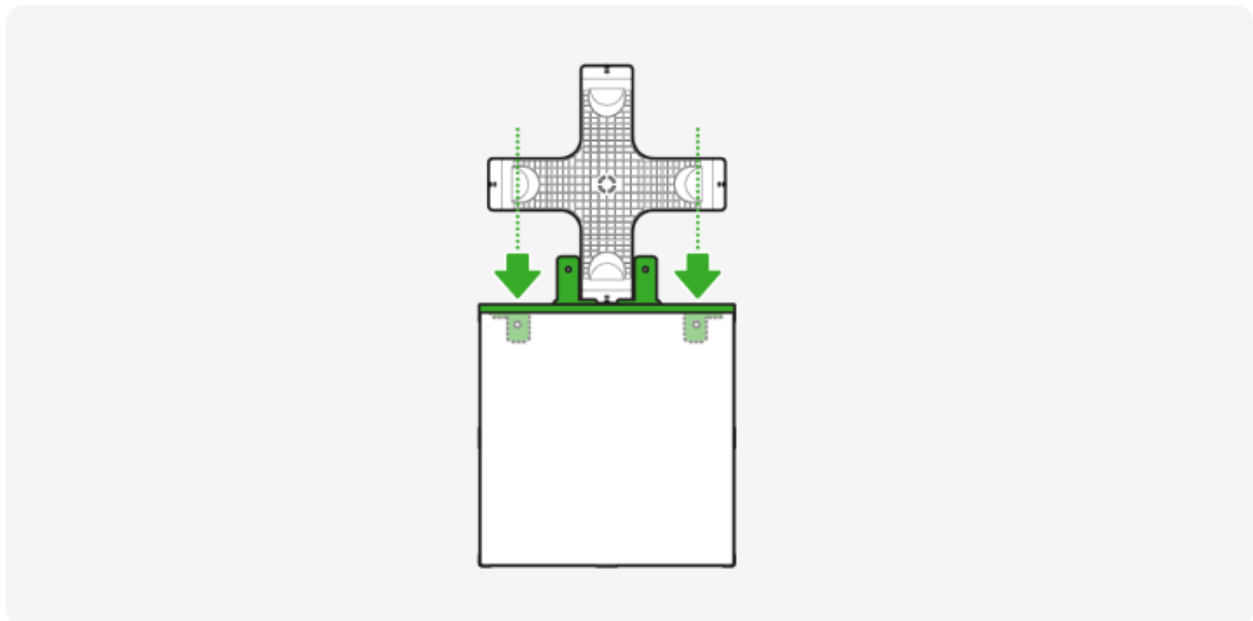
4. Slide the shelf out of the bottom panel.



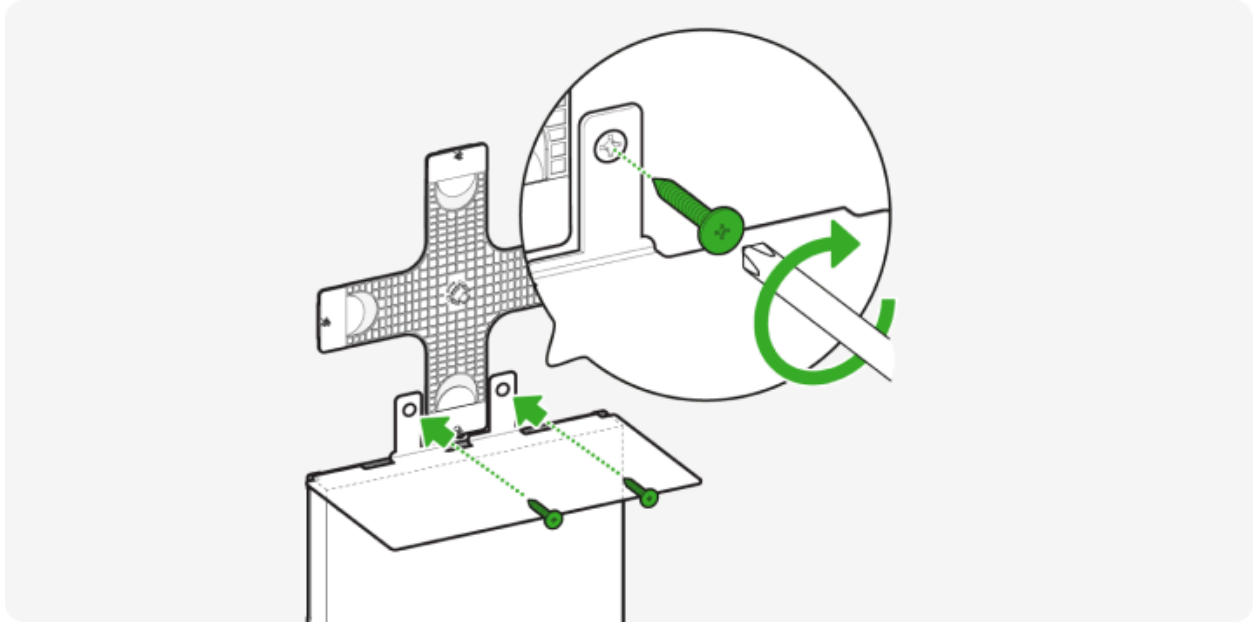
5. Drill holes into the marked areas on the wall.
6. Screw anchors into the drilled holes. For concrete walls, use the concrete anchors. For drywalls, use the drywall anchor. Ensure that the screws are driven in all the way so they do not interfere with your layout.



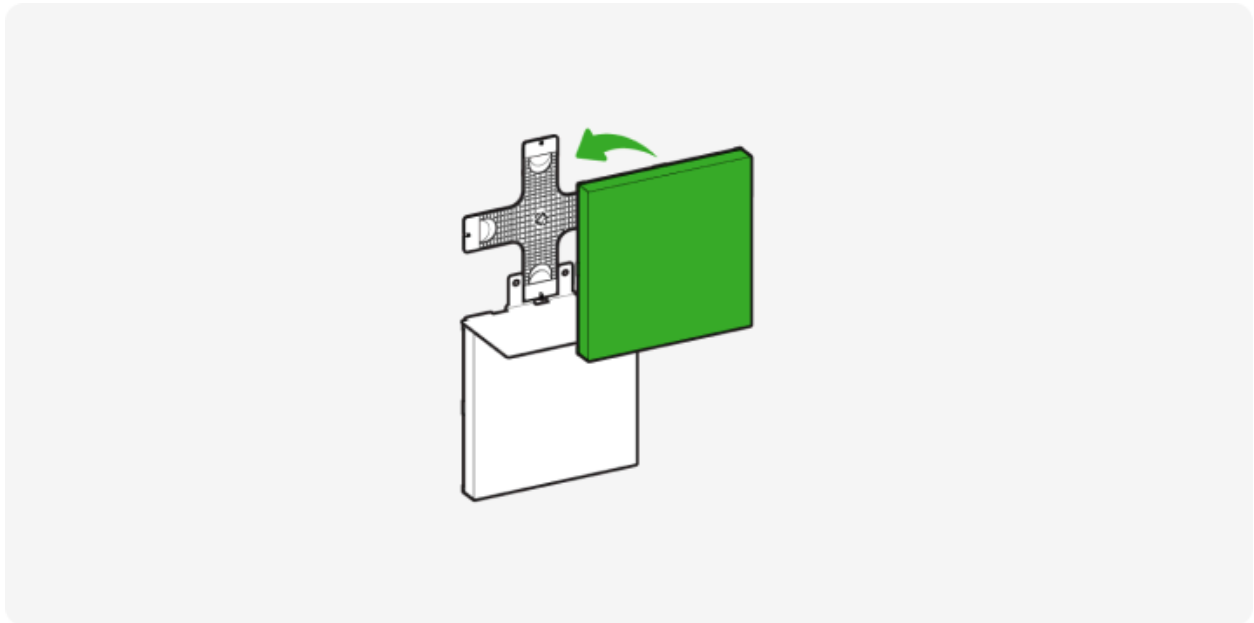
7. Slide the shelf back into the top of the bottom panel.



8. Drive the screws into the anchors, securing the shelf in place. Ensure that the screws are driven in all the way so they do not interfere with your layout.

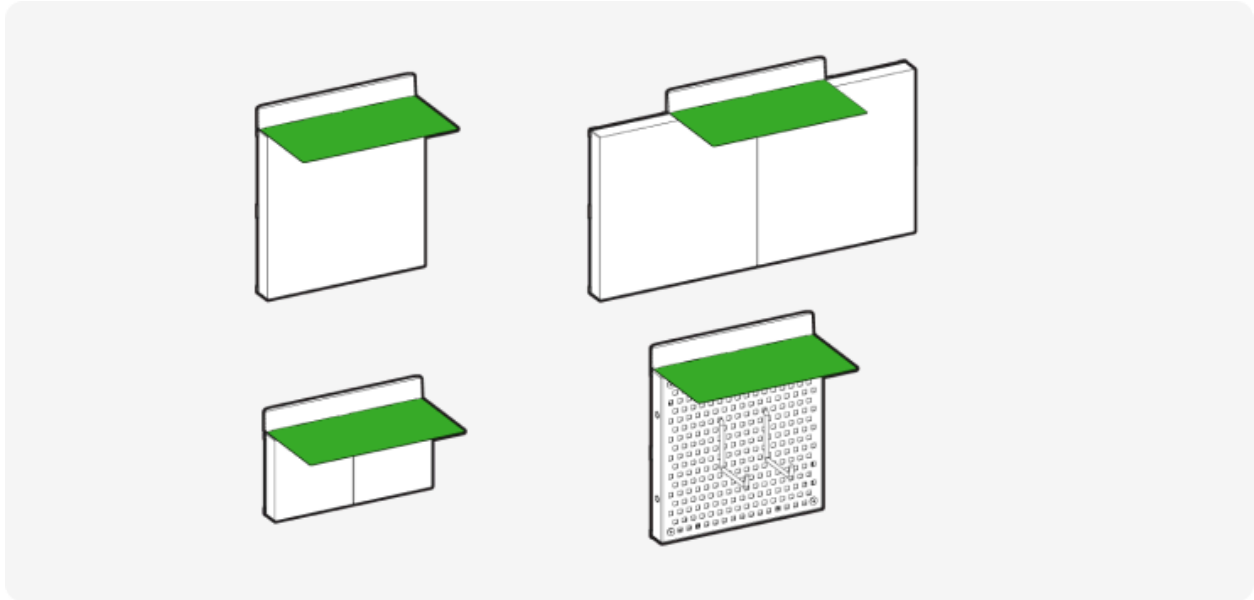


9. Reattach the top panel to the mounting plate.

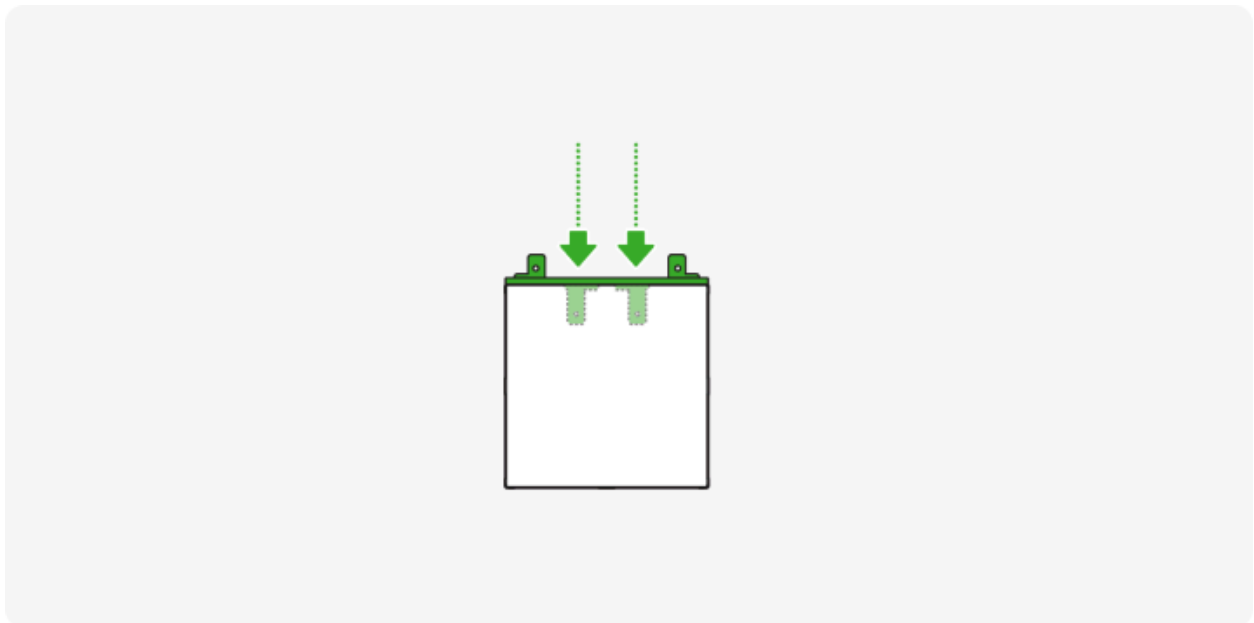


Shelf Installation Method C

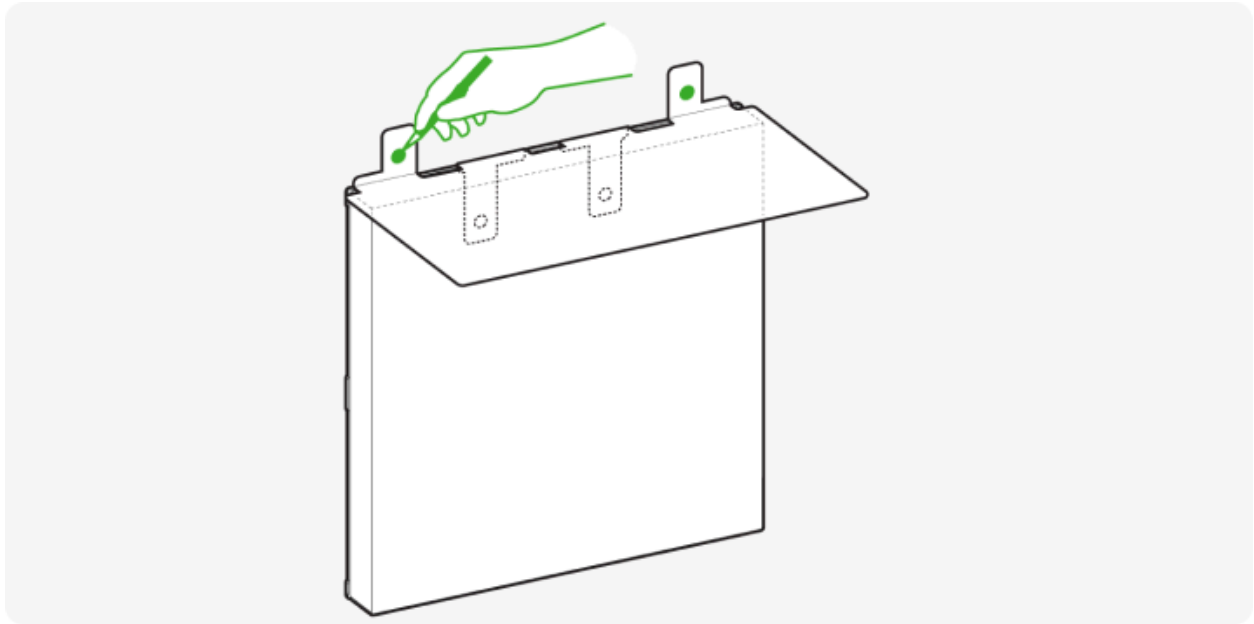
Method C: For shelf installations at the top of a layout. Use this method if no panels will be placed on top of your shelf.



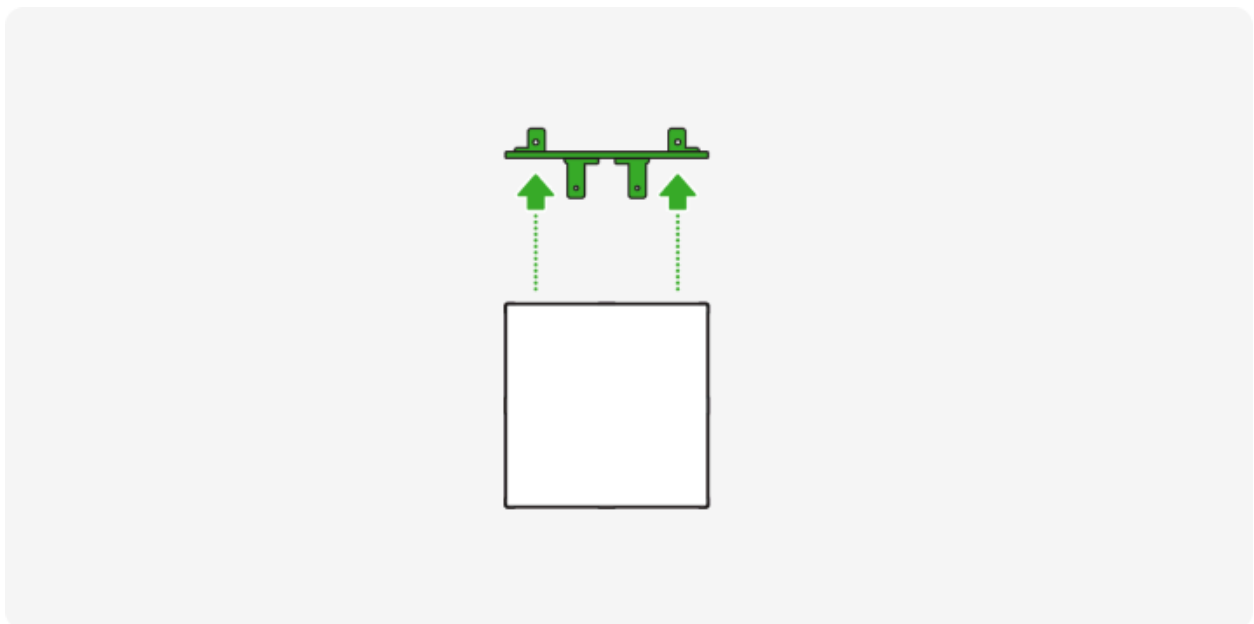
1. Slide the long prongs of the shelf into the top of the panel.



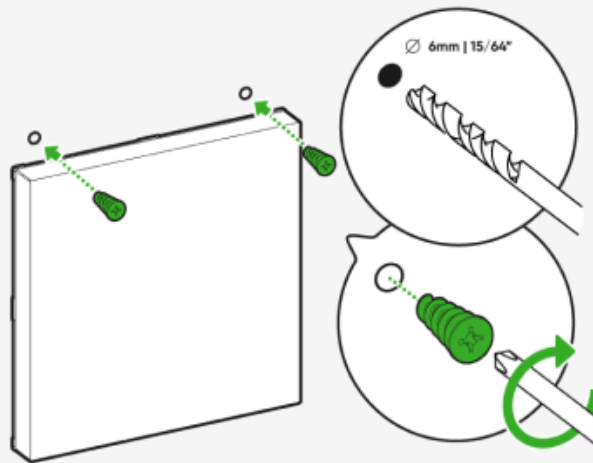
2. Use a pencil to mark the two top holes in the shelf - this is where the anchors will go.



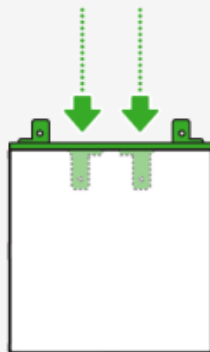
3. Slide the shelf out.



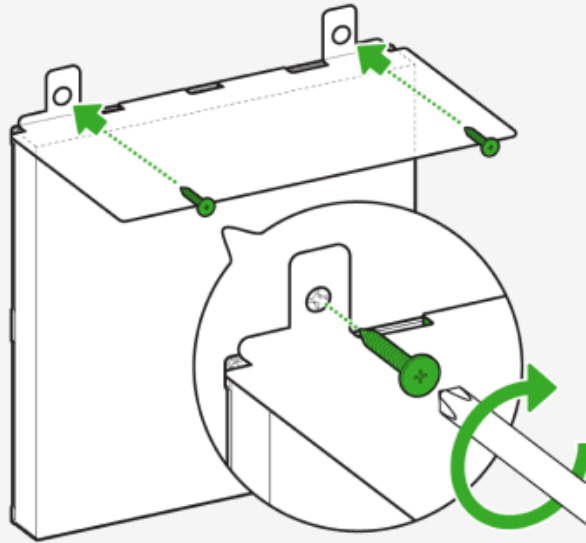
4. Drill holes into the marked areas on the wall.
5. Screw anchors into the drilled holes. For concrete walls, use the concrete anchors. For drywalls, use the drywall anchor.



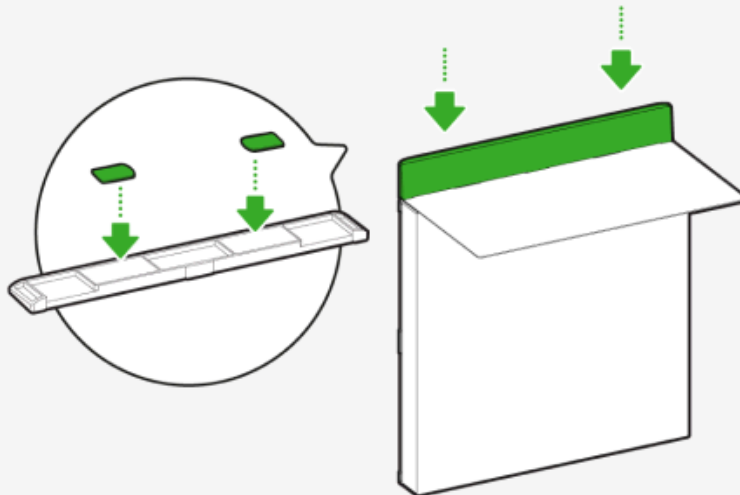
6. Slide the shelf back into the top of the panel.



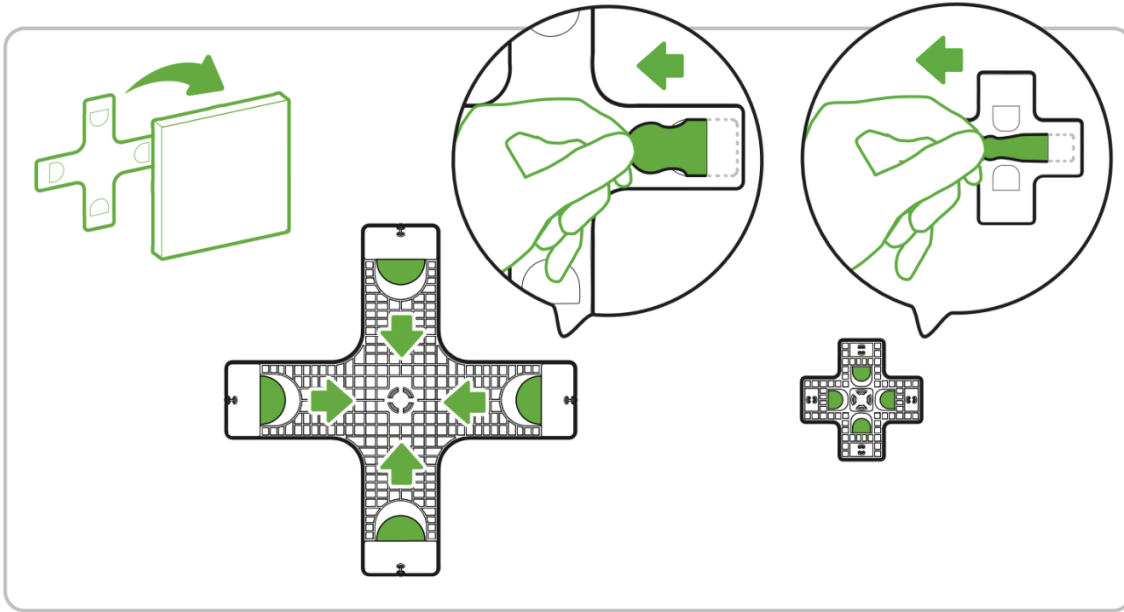
7. Drive the screws into the anchors, securing the shelf in place. Ensure that the screws are driven in all the way so they do not interfere with your layout.



8. **Optional:** Mount Shelf Cover. Add tape to the back of the shelf cover. Remove the protective liner from the tape and mount it over the shelf prongs.



06 | Uninstalling Panels



To uninstall your Blocks Panels, remove the panel, leaving the mounting plate on the wall. Pull the tape from under the tabs very slowly so the tape stretches and does not snap. The mounting plate will release from the wall once all tape has been removed

Pairing Your Panels for iOS

To ensure a smooth pairing process, make sure you have the following things ready.

YOUR DEVICE	2.4 GHZ WI-FI	PAIRING CODE
Requires iOS 15.4+, turn ON Bluetooth for pairing Note: iOS 16.5+ is required to pair with a Smart Home Ecosystem	2.4 GHZ Wi-Fi is required. 5 GHz networks are not compatible with Nanoleaf products.	A QR code and/or 8-digit code on your Quick Start Guide, on the back of the Controller, or on your Power Supply Unit.

1. Download and Open the Nanoleaf App

You can find the official Nanoleaf App in the Apple App Store. Make sure you have the latest version.

2. Pair your Blocks

2.1 On the Dashboard, tap the pencil icon in the top right corner.

2.2 Tap “Add Device +”

2.3 The app will automatically open up the pairing window.

2.4 Follow the instructions on the screen to either:

- Scan the QR code
- Enter in the 8-digit pairing code found on your Blocks Power Supply Unit, Controller, or Quick Start Guide/Welcome Card

2.5 Once pairing is complete, your Blocks panels should flash green.

2.6 Your Nanoleaf Blocks should now be ready to go on the Nanoleaf App!

Pairing Your Panels for Android

To ensure a smooth pairing process, please make sure you have the following things ready.

YOUR DEVICE	2.4 GHZ WI-FI	PAIRING CODE	CONTROLLER
Requires Android 9+, turn ON Bluetooth, and Google Play Services app version 22.48.14. Ensure your location settings are enabled on your device.	2.4 GHZ Wi-Fi is required. 5 GHz networks are not compatible with Nanoleaf products.	A QR code and/or 8-digit code on your Quick Start Guide, on the back of the Controller, or on your Power Supply Unit.	The controller is ready when the Status LED is solid white.

1. Download and Open the Nanoleaf App

You can find the official Nanoleaf App in the Google Play Store. Make sure you have the latest version.

2. Pair your Blocks

2.1 On the Dashboard, tap the pencil icon in the top right corner.

2.2 Tap “Add Device +”

2.3 Follow the instructions on the screen to either:

- Scan the QR code
- Manually enter the 8-digit pairing code.
 - Easily identify the device you’re pairing by using the “signal” icon (your device will flash), or by matching the Unique ID on your Blocks Controller with the last 4 digits of a device name on the app.




2.4 Once pairing is complete, your Blocks panels should flash green.

2.5 Your Nanoleaf Blocks should now be ready to go on the Nanoleaf App!

Controlling your Panels





Controller

The Controller is the brain of the Nanoleaf Blocks. The touch control buttons on the Controller provide convenient shortcuts to common commands. The Controller can be attached to any available linker slot in your layout.

	Single Press Turns lights ON/OFF
	Single Press Cycle through to next preset Scene
	Single Press Cycle through Rhythm Scenes
	Single Press Increase brightness by 10%
	Single Press Decrease brightness by 10%

Nanoleaf App

With the Nanoleaf App, you can turn your lighting on/off, control brightness, group lights by room, create your own multicolored Scenes or explore thousands of already made ones.

	Dashboard Control your rooms and devices. Click on a specific device to adjust brightness, change the Scene it's playing, or create your own Scene!
	Explore Find helpful information including tutorials, new device features, integrations, and learn about other Nanoleaf products, etc.
	Discover Find and download new Scenes created by the Nanoleaf community. Search up any word or phrase to get inspired by what others have created or have our Magic Scene generator create a color palette inspired by your search term.
	Schedules Automate your Scenes to turn on or off.

Nanoleaf Desktop App

With the Nanoleaf Desktop App, you can control your Blocks from a web browser on your computer. Create and download new Scenes right from your computer, or try the Screen Mirror feature. The Desktop App was designed to simplify the management of larger installations and offer control of many different layouts at once. [Download Desktop App](#)

Voice Control


You can control your Nanoleaf Blocks by voice in a few different ways if you connect it to a smart home ecosystem and Matter compatible hub.

Make sure to name your device something simple in the Nanoleaf/smart home ecosystem app. Use your smart home ecosystem's voice assistant to utilize voice control.

Hey Siri...	Okay Google...	Alexa...
"Turn [Device Name] on/off."	"Turn on [Device Name]."	"Turn on [Device Name]."
"Set [Device Name] to 10% brightness."	"Turn on/off the lights in [Room Name]."	"Turn off [Device Name]."
"Brighten/dim the lights."	"Turn on/off all my lights."	"Brighten/dim [Device Name]."
"Brighten/dim the lights to [%]."	"Turn off [Device Name]."	"Set [Device Name] to [%] brightness."
"Set [Device Name] to [Colour]."	"Brighten/dim [Device Name]."	"Set [Device Name] to [Colour]."
	"Brighten/dim all my lights."	
	"Set [Device Name] to [%]."	
	"Set [Device Name] to [Colour]."	

Nanoleaf Open API

A local network API designed to extend your product experience. Integrate your setup with third party devices and services and enable more granular control of the hardware. [Sign In](#)

To enable open API Pairing hold  for 10 seconds.

Problems & Solutions

Reset Options

This will reset the Wi-Fi and all saved pairing configurations. Your saved scenes will remain.

1. Press and hold the Power and brighten buttons together on the Controller for 10 seconds.
2. Let go once the Status LED starts flashing.
3. Wait for the Power button LED to remain on and steady.
4. On the Nanoleaf App, delete the previous device and re-pair it again.

Common Solutions

“I moved or changed my Wi-Fi network.”

Try a Wi-Fi Settings Reset

This will allow you to connect your Blocks to a new Wi-Fi network.

1. Plug your Blocks into a power source.
2. With the Power and the Brighten buttons on the Controller, press and alternate between them 5 times (10 presses total).
3. The Status LED will become a solid white.

“My Blocks are paired but unreachable.”

Try to Toggle your Wi-Fi

On your phone, toggle the Wi-Fi off, then on again.

Try to Power Cycle your Controller

Unplug your Controller from power, then plug it back in.

Try to Power Cycle your Router

Unplug your Router from power, then plug it back in.

Try to [Reset](#)

“I am not able to pair my Blocks.”

Check your Router Settings

1. On your phone, toggle the Wi-Fi off, then on again.
2. Ensure multicast, IGMP, UPnP (if available) are enabled on your router settings.

Try to [Reset](#)

“I don’t see my Blocks in the App for setup.”

Wi-Fi Troubleshooting

Plug your PSU into power. The Power button on the Controller will light up after 1 minute.

If your Status LED is **Solid White**, means your Blocks are ready to connect to your network.

1. Make sure your mobile device Wi-Fi is on.
2. Move your mobile device closer to your panels.
3. Toggle the Wi-Fi on your mobile device off, then on.

If your Status LED is **Flashing**, means Your Wi-Fi is configured, but the panels cannot connect to the target network.

1. Try to Power Cycle your Blocks (unplug your PSU from power, then plug it back in).
2. If your panels are paired on the Nanoleaf App, delete the device and re-pair them with the Standard Pairing Process.

If your Status LED is **Unlit**, means Your Wi-Fi is configured and connected to your router.

1. Make sure your mobile device is on the same network.
2. Toggle the Wi-Fi on your mobile device off, then on.

Placement Tips

The following tips can help your Nanoleaf Blocks achieve the best wireless range & network reception.

1. Place your Blocks in an open area where there are less obstructions, such as large pieces of furniture or walls.
2. Avoid placing your Blocks behind furniture or inside cabinets.
3. Don't place your Blocks in areas surrounded by metal surfaces on three or more sides. This can cause signal issues.
4. Try to place your Blocks at least 25 feet (8 meters) away from any microwave oven, 2.4 GHz cordless phone, Wi-Fi devices, or other source of interference.
5. Place your Blocks as close to your Wi-Fi home router as possible. For best performance, keep the distance below 65 feet (20 meters) and have no more than one wall in between.

FAQs

Q: How are these different from Nanoleaf Shapes and Nanoleaf Canvas?

A: Nanoleaf Blocks are different in a few ways:

1. Edge-to-edge evenly diffused lighting (Shapes have rounded corners and edges that do not light up, while Canvas has a slight pattern when lit up)
2. No touch reactivity
3. Some components such as the Light Pegboard and Shelf must be screw mounted (most of our light panels can be adhesive mounted)
4. It goes beyond statement lighting and offers new accessories that offer storage/display functionality!

Q: How are these different from Nanoleaf Skylight?

A: The main difference is in the use case! Skylight is hardwired ceiling product which is AC powered, while Blocks is primarily a plug-in wall product.

Q: How are Nanoleaf Blocks mounted to the wall?

A: You can mount Nanoleaf Blocks Squares, Small Squares & Textured Squares with the included double sided mounting tape on any smooth and flat surface. Nanoleaf Blocks Light Pegboards & Shelves must be screw-mounted using the included screws.

NOTE: Tape is NOT suitable for ceiling installations or textured, porous, or popcorn surfaces (ie. wallpaper or brick walls). Because Nanoleaf Blocks are also heavier and thicker, we do not suggest mounting them onto the ceiling with adhesive tape.

Q: Can I physically connect Nanoleaf Blocks with other Nanoleaf light panels?

A: Nanoleaf Blocks can be connected to Nanoleaf Shapes & Elements in a layout as they share the same type of rigid linkers. Note: Nanoleaf Blocks & Shapes do not share the same type of flex linkers. You can only connect them together using rigid linkers.

Q: Are Nanoleaf Blocks touch reactive?

A: Nanoleaf Blocks are not touch reactive.

Q: How much weight can the Pegboard/Shelves hold?

A: 1.5kg for Shelves and 3kg for Pegboard