



# FIBARO

HOME INTELLIGENCE

---

## SMART MODULES

SMART MODULE  
DOUBLE SMART MODULE

---



# INTRODUCTION

---

As a manufacturer of modern Smart Home solutions, we strive to constantly provide more and more perfect versions of our products. One of the flagship FIBARO devices was Relay Switch - withdrawn from our offer in February.

This versatile product provided comprehensive control solutions and was readily chosen by professional installers. Now, **FIBARO** is replacing Relay Switch device with a new family of SMART MODULES products - **Smart Module** and **Double Smart Module** - in which we have **improved security** and **expanded the possibilities of their application.**

## WHAT ARE SMART MODULES?

**Smart Module** and **Double Smart Module** are FIBARO micro modules that replace the previous generation of Relay Switch devices.

### Technical specifications:

- newer Z-Wave generation - improving range and security,
- dry contact (potential-free contacts) - universal application,
- no power measurement,
- additional possibilities compared to the previous generation, e.g. changing the orientation of inputs and outputs, launching 5 types of scenes,
- introduction of improvements for the installer, e.g. NO / NC mode.

The device is available with one and two relays.



**SMART MODULE**  
FGS-214



**DOUBLE SMART MODULE**  
FGS-224

## ONE DEVICE - MULTIPLE APPLICATIONS



### Lighting

Turning on the light depending on the time of day and motion detection.

SMART MODULE  
+ MOTION SENSOR



### Heating

Boiler control based on real heat demand.

SMART MODULE  
+ THE HEAT CONTROLLER



### Safety

Shut off the water or gas supply by controlling the solenoid valve.

FLOOD SENSOR / SMOKE SENSOR  
+ SMART MODULE + VALVE



### Entrance control

Gate control with FIBARO KeyFob.

SMART MODULE + KEYFOB  
+ ELEKTROKATCH



### Modern heating

Controlling multiple underfloor heating zones using a schedule.

SMART MODULE + UNDERFLOOR  
HEATING VALVE + TEMP. SENSOR



### Garage doors & gates

Opening the gate using the APP

SMART MODULE  
+ GATE CONTROLLER



### Watering the garden

Adjusting watering the garden basing on actual water demand.

SMART MODULE  
+ VALVE



### DC shutter blinds & shades

Opening and closing DC blinds based on the time of day.

SMART MODULE  
+ DC SHUTTER BLIND

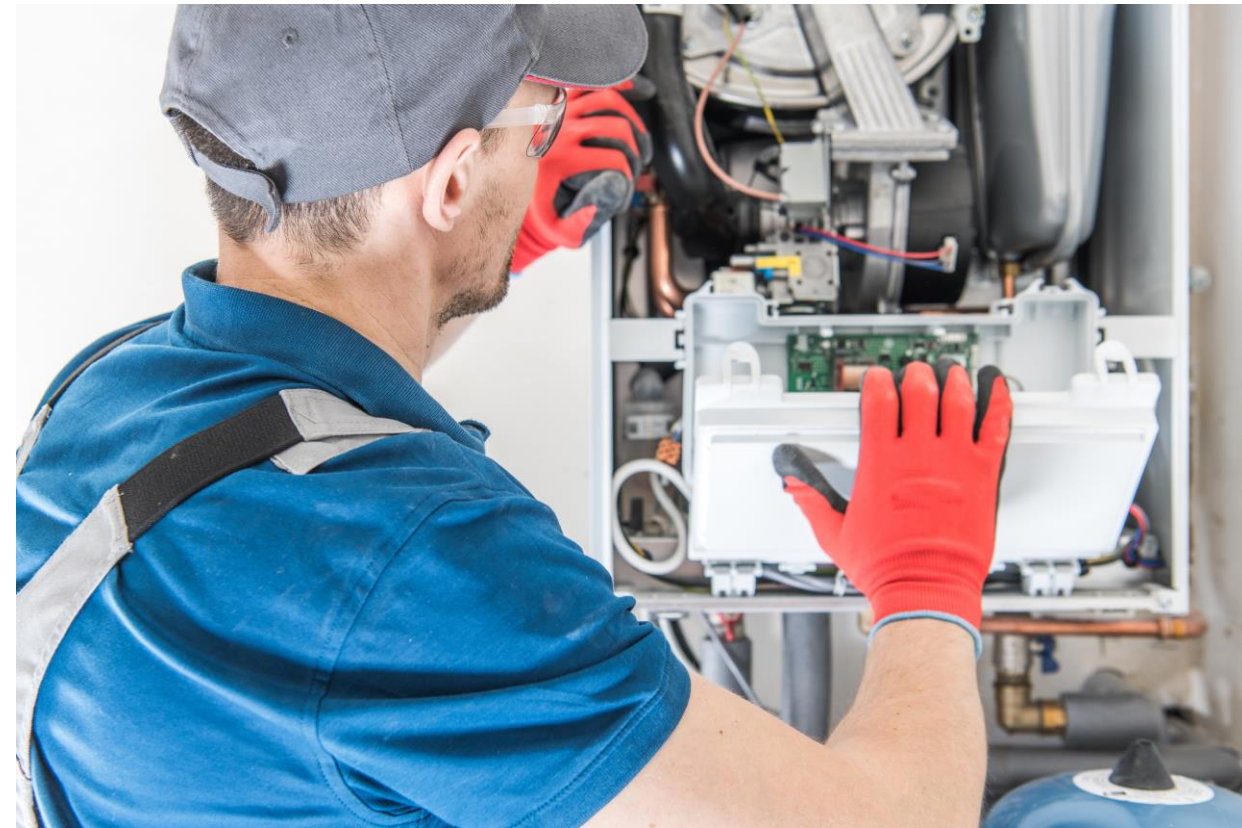


## SMART MODULE + THE HEAT CONTROLLER = NEW POSSIBILITIES

The FIBARO System allows you to control electric furnace thanks to the cooperation of HOME CENTER, THE HEAT CONTROLLER and SMART MODULE.

The intelligent algorithm built into FIBARO THE HEAT CONTROLLER sends information about the heat demand every time it detects that heating is inefficient. FIBARO HOME CENTER passing it to SMART MODULE will start the furnace.

To maximize savings, SMART MODULE will turn the furnace off whenever THE HEAT CONTROLLER reaches the target temperature.



FIBARO THE HEAT CONTROLLER v4.7

FIBARO HOME CENTER 2 / HOME CENTER LITE v4.590 (plugin *Warming Prioritizer*)

## VALUE PROPOSITION



### SAFETY

alarm system management

water cut-off

gas cut-off

stair, driveway and gutter heating control

remote gate control

emergency lighting

activating the alarm siren



### COMFORT

controlling the entrance and garage gate

boiler operation control

electric heating control

remote entrance management

temperature control

scheduled control

DC shutter blinds and shades control



### SAVINGS

zone control with underfloor water and electric heating

infrared heating mat control

boiler operation control

controlling garden watering based on actual water demand

scheduled control

control of heating stairs, driveway, gutters based on the actual temperature

## BENEFITS FOR THE USER



#1

### A sense of control over the environment

The ability to control other systems and devices at home. Operation of valves, electric locks, heating systems, input control and alarms.

#2

### A proven solution

A sophisticated device based on experience gathered for almost 10 years.

#3

### Quality and safety

High reliability and safe use supported by internal tests and tests in independent certification bodies.

## INSTALLER BENEFITS

#1

### An improved solution

Simplified configuration, additional operating modes, built-in mechanisms for easy installation.

#2

### The force of habits

Mechanics improved over the past years. Unchanged connection diagram, use of proven terminal strips.

#3

### Quality

Guarantee of high quality solutions for the customer. High reliability and security.





# BENEFITS FOR A DISTRIBUTOR



#1

## A proven solution

New devices that are a development of a well-functioning and proven concept.

#2

## Simple communication

New naming to facilitate communication of FIBARO solutions according to applications.

#3

## Trustworthy business with potential

Guaranteed stable sales while maintaining a favorable margin.

# SMART MODULES AND RELAY SWITCHES - DIFFERENCES

	SMART MODULES	RELAY SWITCHES	MEANING FOR THE INSTALLER	VALUE FOR THE CUSTOMER
TECHNOLOGY	Z-WAVE 5	Z-WAVE 3	<ul style="list-style-type: none"><li>▪ IMPROVED DEVICE RANGE</li><li>▪ EFFICIENT INCLUSION MECHANISM</li></ul>	<ul style="list-style-type: none"><li>▪ EASIER EXPANSION WITH NEW Z-WAVE DEVICES</li><li>▪ IMPROVED COMMUNICATION RELIABILITY</li><li>▪ IMPROVED RANGE</li></ul>
VERSATILITY	100 - 240VAC POWER SUPPLY AND 24-30VDC	110 - 240VAC POWER SUPPLY	APPLICATION IN LOW VOLTAGE CIRCUITS	POSSIBILITY TO OPERATE ENTRY AND GARAGE DOORS, HEATING SYSTEMS, SAFETY ETC.
APPLICATION WITH FIBARO SYSTEM	LAUNCH ANY SCENARIO FOR 5 CLICK TYPES	STARTING SCENARIOS FOR 1 CLICK TYPE	MORE VERSATILITY TO USE WITH A SMART HOME SYSTEM	UP TO 5 SCENARIOS CAN BE USED WITH ONE BUTTON
MODES OF OPERATION	<ul style="list-style-type: none"><li>▪ ON and OFF</li><li>▪ DELAYED OFF</li><li>▪ AUTOMATIC SWITCHING OFF AFTER A SPECIFIC TIME</li><li>▪ CYCLIC SWITCHING</li><li>▪ NO / NC MODES</li></ul>	<ul style="list-style-type: none"><li>▪ ON and OFF</li><li>▪ AUTOMATIC SWITCHING OFF AFTER A SPECIFIC TIME</li></ul>	MULTIPLE APPLICATIONS, e.g. IN THE WATERING OF THE GARDEN, WATER AND GAS CUTTING, FAN CONTROL, HEATING CONTROL	BETTER ADAPTATION TO THE USER'S NEEDS IN THE FIELD OF SAFETY AND HEATING CONTROL SYSTEMS

## SMART MODULES AND SMART IMPLANT

**FIBARO Smart Modules** complement each other with the **FIBARO Smart Implant** device.

The area of their application will depend primarily on the available power supply and load parameters.

---

### Smart Modules

---

FIBARO Smart Modules are used wherever it is necessary to control a current greater than 150mA.

- Z-Wave 5 + S2 + Smart Start
- one or two potential-free outputs
- 100-240 VAC and 24-30 VDC power supply
- load current:
  - 6.5A in single version
  - 6A per channel, 9.5A completely in double version

---

### Smart Implant

---

FIBARO Smart Implant works great in alarm and measuring systems, and wherever the miniaturization of actuators is crucial.

- Z-Wave 5 + S2 + Smart Start
- two potential-free outputs and two potential-free inputs
- 9-30 VDC power supply
- load current 150mA
- voltage at 30VDC / 20VAC outputs
- possibility of connecting additional humidity or temperature sensors

A blue-tinted photograph of a technician wearing a white hard hat and a dark long-sleeved shirt, working on an open electrical control panel. The panel contains various components like circuit breakers, meters, and a dense network of wires. The technician's hands are visible, interacting with the equipment. Overlaid on the center of the image is the text 'TECHNICAL SPECIFICATIONS' in a bold, white, sans-serif font, flanked by two horizontal white lines.

# TECHNICAL SPECIFICATIONS





## FIBARO SMART MODULE

FGS-214

### TECHNICAL DATA

Power Source	100-240V~50/60Hz or 24-30VDC
Rated load current (resistive loads only):	6.5A
Operating temperature	0°C - 35°C
For installation in boxes	Ø >= 50mm, depth >= 60mm
Radio protocol	Z-Wave (500 series chip)
Radio frequency	868.4 or 869.8 MHz EU 921.4 or 919.8 MHz ANZ
Range	up to 40m (131 ft) (depending on building structure)
Outside dimensions (L x W x H)	42.5mm x 38.25mm x 20.3mm
Compliance with EU directives	RoHS 2011/65/EU RED 2014/53/EU 2015/863

### PACKAGING GIFT PACK

Weight	0.061 kg
Length	6.5 cm
Width	6.6 cm
Height	4.6 cm
Pieces	1

### PACKAGING INNER CARTON

Weight	2 kg
Length	34.0 cm
Width	21.0 cm
Height	10.5 cm
Pieces	30

## TECHNICAL DATA

Power Source	100-240V~50/60Hz or 24-30VDC
Rated load current (resistive loads only):	6A per channel, 9.5A overall
Operating temperature	0°C - 35°C
For installation in boxes	Ø >= 50mm, depth >= 60mm
Radio protocol	Z-Wave (500 series chip)
Radio frequency	868.4 or 869.8 MHz EU 921.4 or 919.8 MHz ANZ
Range	up to 40m (131 ft) (depending on building structure)
Outside dimensions (L x W x H)	42.5mm x 38.25mm x 20.3mm
Compliance with EU directives	RoHS 2011/65/EU RED 2014/53/EU 2015/863



## FIBARO DOUBLE SMART MODULE

FGS-224

### PACKAGING GIFT PACK

Weight	0.061 kg
Length	6.5 cm
Width	6.6 cm
Height	4.6 cm
Pieces	1

### PACKAGING INNER CARTON

Weight	2 kg
Length	34.0 cm
Width	21.0 cm
Height	10.5 cm
Pieces	30



# FIBARO MODULES COMPARISON

	DIMMER	SWITCHES	SMART IMPLANT	SMART MODULES	RGBW CONTROLLER	ROLLER SHUTTER
APPLICATIONS	<ul style="list-style-type: none"> <li>LIGHTING DIMMABLE 230VAC</li> </ul>	<ul style="list-style-type: none"> <li>230VAC LIGHTING - ON / OFF</li> <li>CONTROLLING ANY 230VAC LOADS</li> </ul>	<ul style="list-style-type: none"> <li>ALARM SYSTEM MANAGEMENT</li> <li>WORKING WITH BINARY DETECTORS (movement, presence, gas, soil moisture, etc.)</li> <li>WORK WITH 0-10V CONVERTERS (wind, temperature, humidity etc.)</li> <li>WORK WITH TEMPERATURE OR HUMIDITY SENSORS</li> </ul>	<ul style="list-style-type: none"> <li>ENTRY GATES</li> <li>GARAGE DOORS</li> <li>HEATING ACTUATORS</li> <li>SAFETY VALVES</li> <li>DC ROLLER SHUTTER MOTORS</li> <li>ELECTROCATCHES</li> </ul>	<ul style="list-style-type: none"> <li>12VDC LIGHTING</li> <li>RGB 12 / 24VDC LIGHTING</li> <li>RGBW 12 / 24DC LIGHTING</li> <li>0-10V CONVERTERS</li> </ul>	<ul style="list-style-type: none"> <li>230VAC ROLLER SHUTTER MOTORS</li> </ul>
AREAS OF APPLICATIONS	LIGHTING	LIGHTING	SAFETY & SECURITY	CLIMATE SECURITY GATES GARDEN	MOOD	ROLLER BLINDS
POWER SUPPLY VOLTAGE	110-230VAC, 50/60Hz	100-240VAC, 50/60Hz	9-30VDC	100-240VAC 50/60Hz or 24VDC	12/24VDC	100-240VAC, 50/60Hz
OUTPUT LOAD	0.25-1.1A	<ul style="list-style-type: none"> <li>up to 6.5A / channel in version FGS-223 and 10A in total</li> <li>up to 8A in version FGS-213</li> </ul>	up to 150mA	<ul style="list-style-type: none"> <li>up to 6A / channel in version FGS-224 and 9.5A in total</li> <li>up to 6.5A in version FGS-214</li> </ul>	up to 6A per channel or up to 12A in total	<ul style="list-style-type: none"> <li>up to 4.2A for resistive loads</li> <li>up to 1.7A for inductive loads</li> </ul>
ACTIVE POWER [W] AND ELECTRICAL ENERGY MEASUREMENTS [kWh]	YES	YES	NO	NO	YES	YES





**FIBARO**