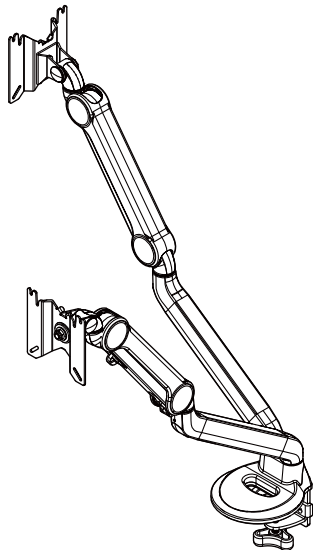




# Corsair Dual-Arm Stand

## User Manual



CLAMP SCREWS ARE RATED AT 83 INCH- POUNDS OF TORQUE.  
PLEASE USE ALLEN WRENCH PROVIDED IN HARDWARE PACK TO FASTEN SCREWS  
SNUG FOR INSTALLATION.

•In accordance with our policy of constant improvement, we reserve the right to alter specifications  
of products shown.

PN: 49-002645-AB

20220906(E-C)

Before assembly please spend some time reading this and follow the procedures step by step. Some panels are viewed differently from the detail drawing below. This is for extra clarity. Do not discard any of the packaging until you have checked all the parts and tools. If you are missing any of the parts, please contact Corsair Customer Support.

Web: [corsair.com](https://corsair.com)

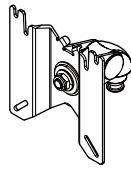
Phone: (888) 222-4346

Warranty: [corsair.com/support/warranty](https://corsair.com/support/warranty)

Support: [support.corsair.com](https://support.corsair.com)

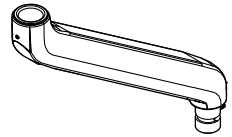
### Parts and Tools Check List

01



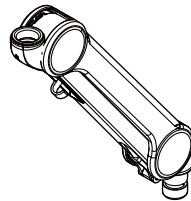
X2

03



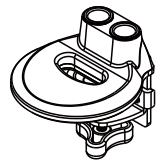
X2

02



X2

04



X1

05



X1

07



(5mm) X1

09



M4\*8 X2

06



M4\*15 X8

08



(4mm) X1

10



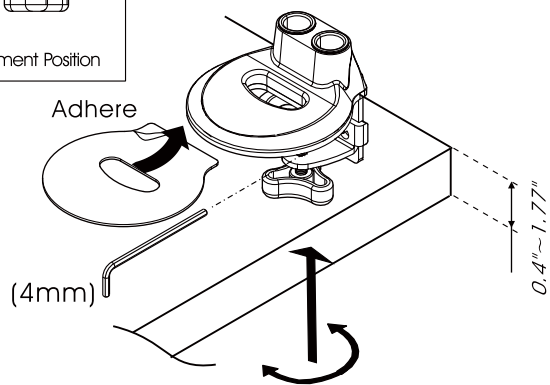
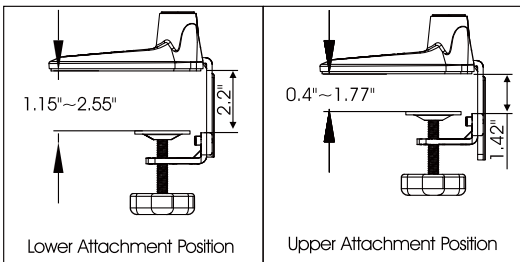
(2mm) X1

## Assembly Guide

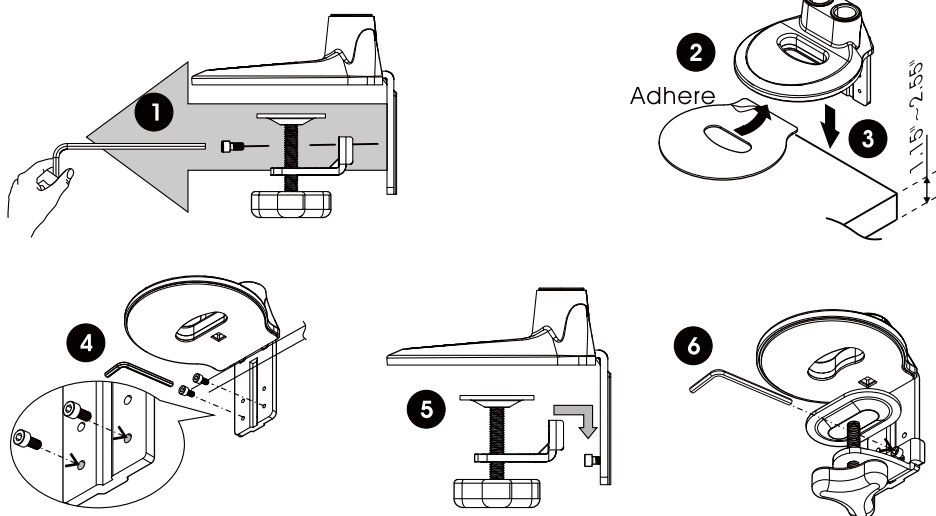
### Step 1

Adhere the pad to the base of the clamp.

Fits desk thicknesses 0.4"~2.55", then clamp the base to the desk.



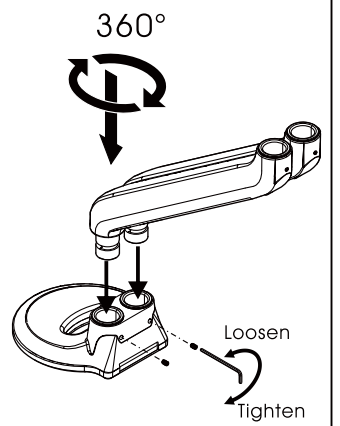
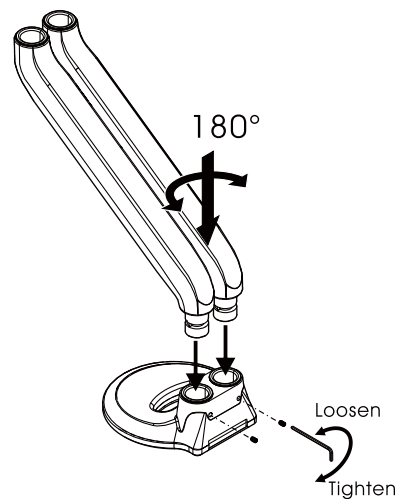
### Lower Attachment Position



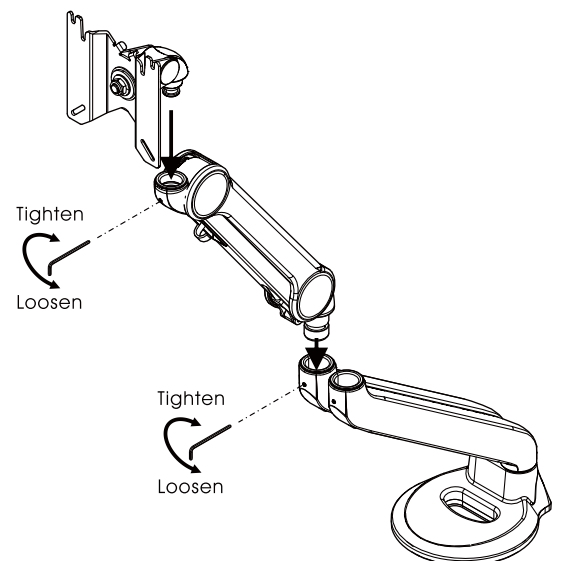
### Step 2

To achieve **180°** Lock-Out function:  
Fully tighten the screw to the base  
with 2mm Allen Key, then back out  
one full turn.

To achieve **360°** Lock-Out function:  
**Turn the arm to the opposite side of  
the base**, and fully tighten the screw  
to the base with 2mm Allen Key, then  
back out one full turn.

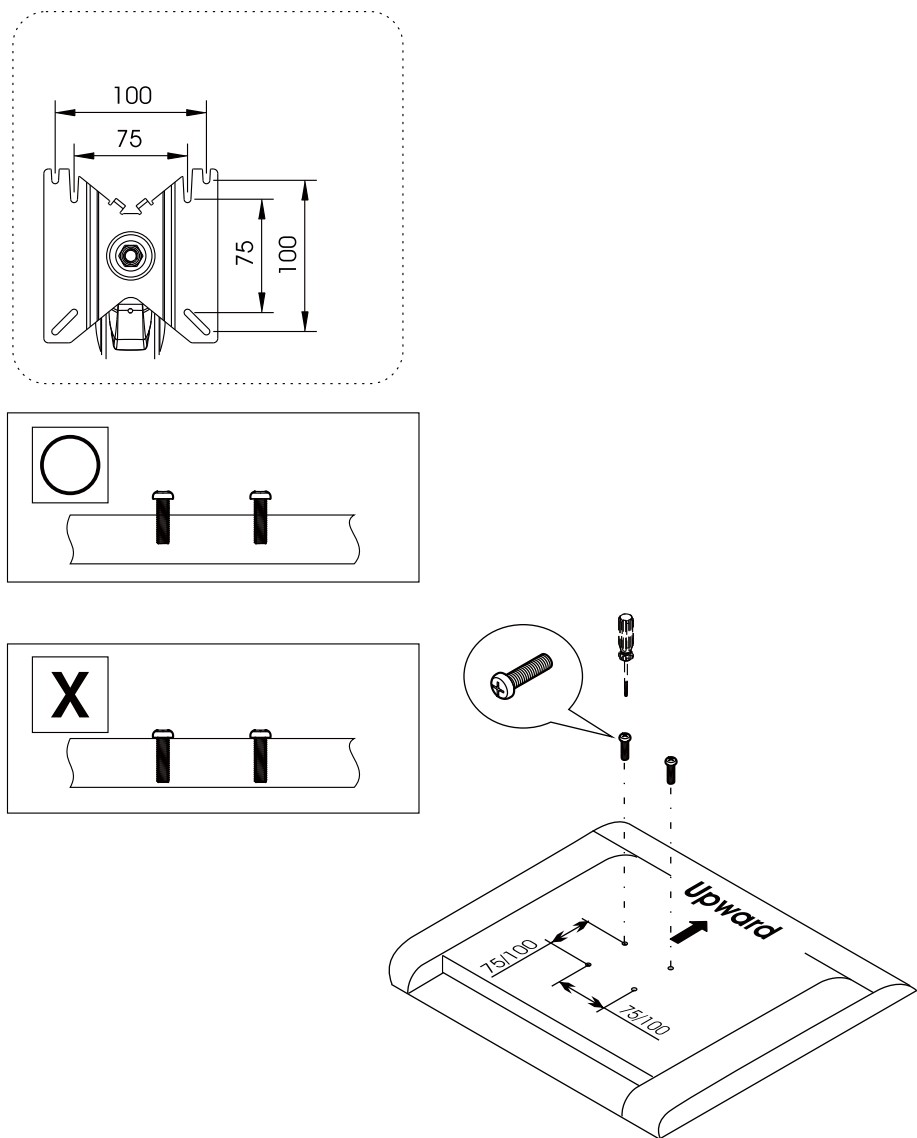


Fasten the screw with 2mm Allen Key, and adjust the tightness of rotation  
according to your demand.



### Step 3

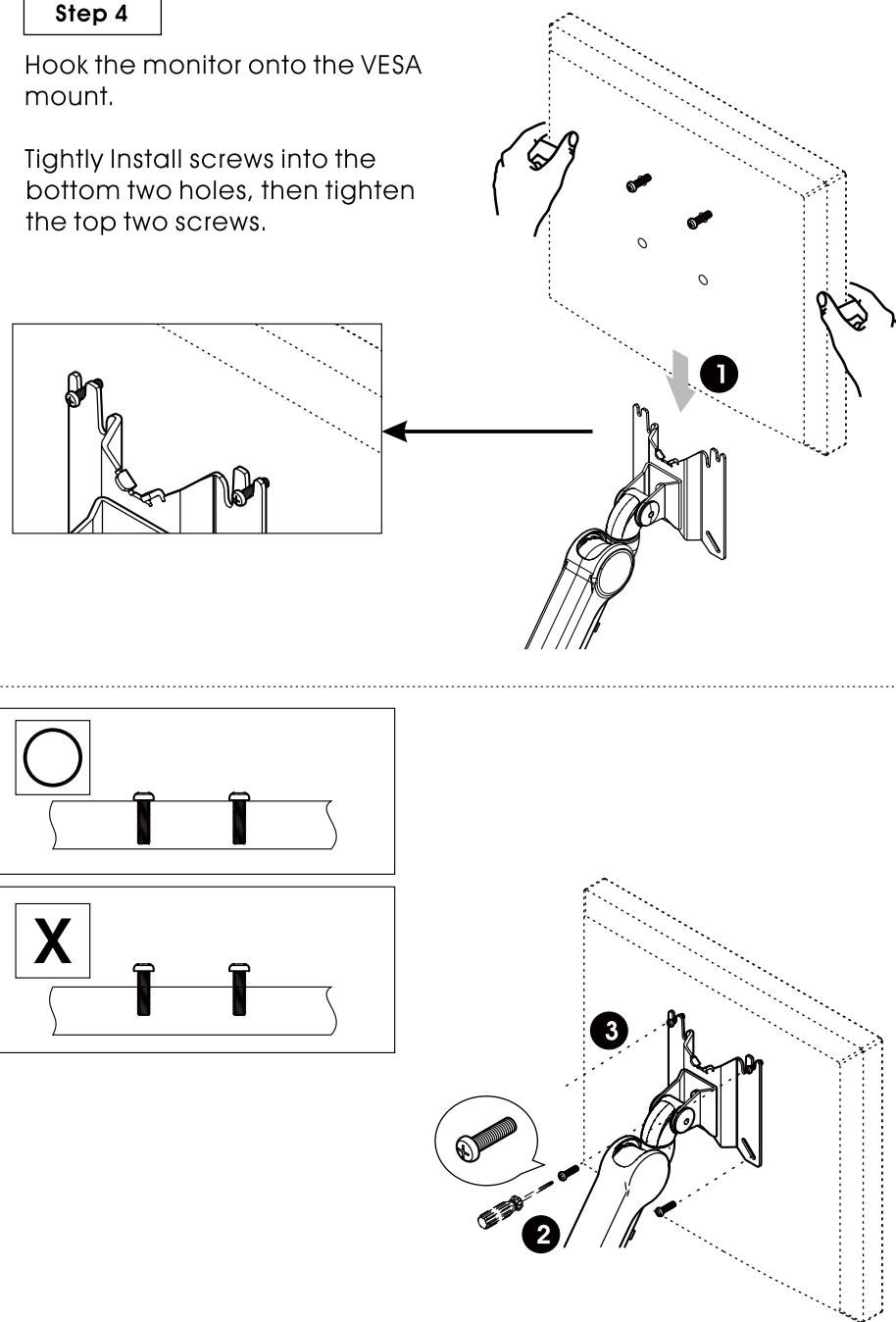
Attach the screws ( Do not fully tighten) to the top two holes on the back of the monitor.



### Step 4

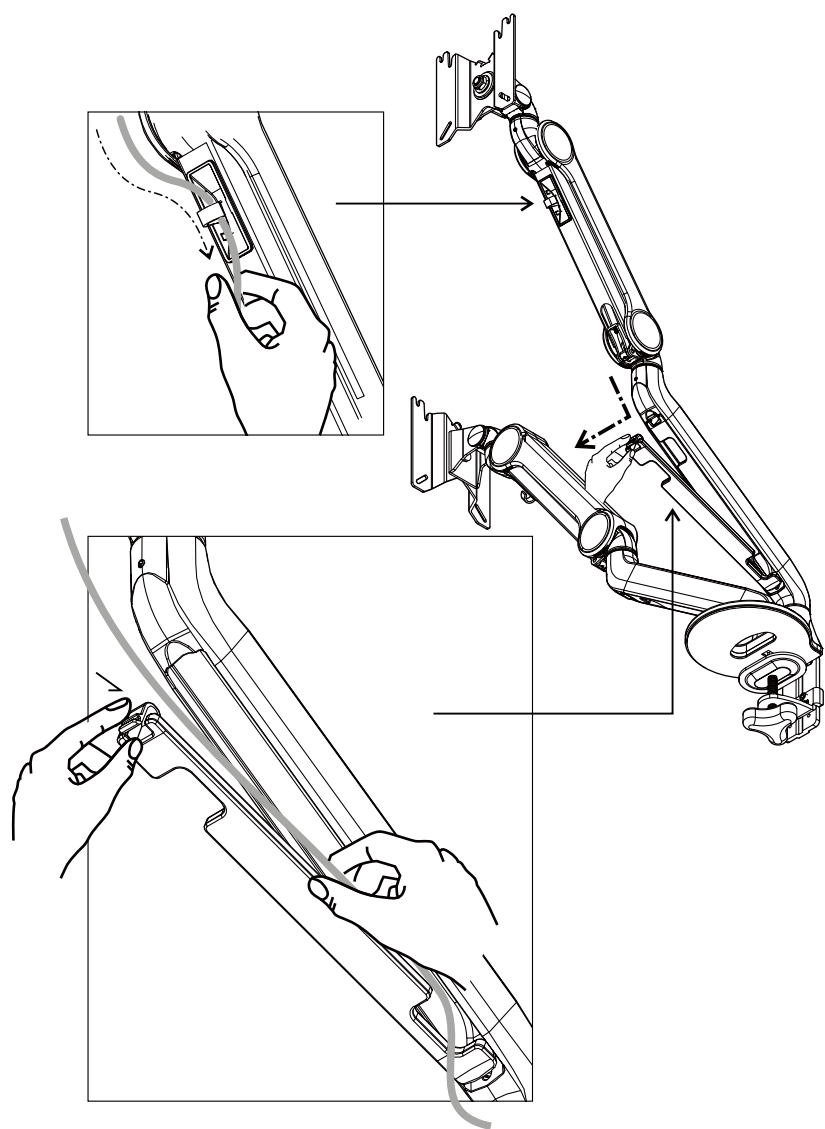
Hook the monitor onto the VESA mount.

Tightly Install screws into the bottom two holes, then tighten the top two screws.



### Step 5

#### Cable management



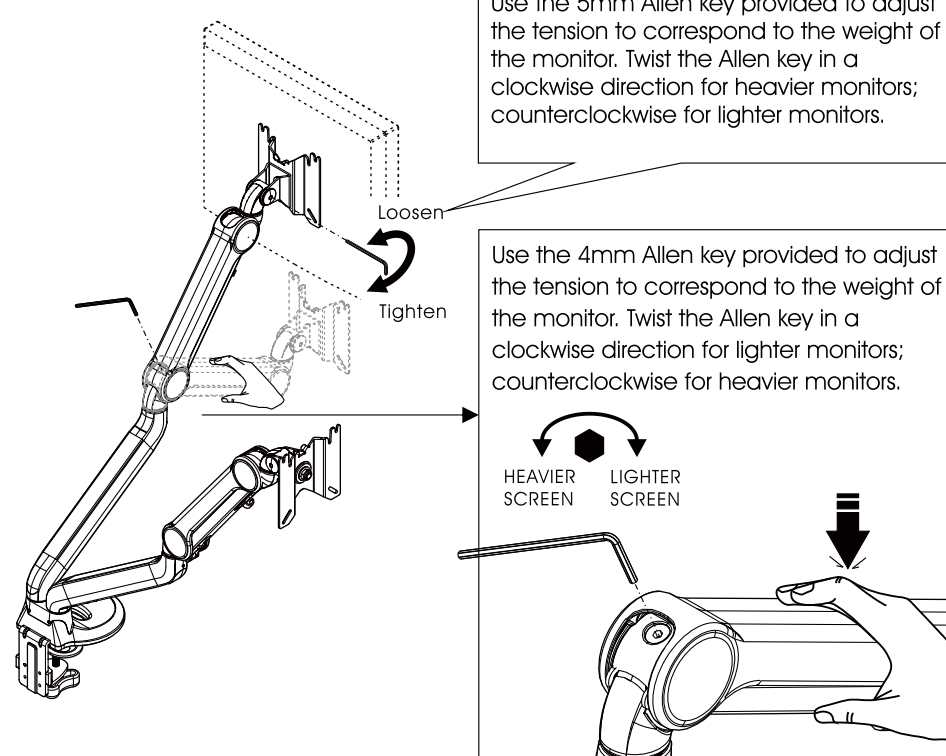
#### Tension Adjustment

##### Caution:

Support arm while adjusting tension.

##### Adjustment:

Use the 5mm Allen key provided to adjust the tension to correspond to the weight of the monitor. Twist the Allen key in a clockwise direction for heavier monitors; counterclockwise for lighter monitors.



##### Loading:(Single Arm)

4.4 ~ 19.8 lbs (2~9 kg)

- Product loading capacities are based on monitors' center of gravity less than 1 3/16" from the end of the VESA interface.
- Loading capacity could be reduced if monitor size is greater than 26" or depth is greater than 2 11/64".
- All product specifications in catalogs are subject to change without notice.