



23" Home Entertainment Monitor

FORIS® FS2331



Shining the spotlight on entertainment



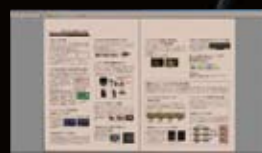
Games



Cinema



Digital Photos



Documents
and eBooks

Games, cinema, digital photos, ebooks...

The monitor with an impressive repertoire.

Gaming and Cinema

Clearer and Sharper Images for Gaming

Selecting the Game preset mode activates two EIZO features called “Power Resolution” and “Power Gamma.”



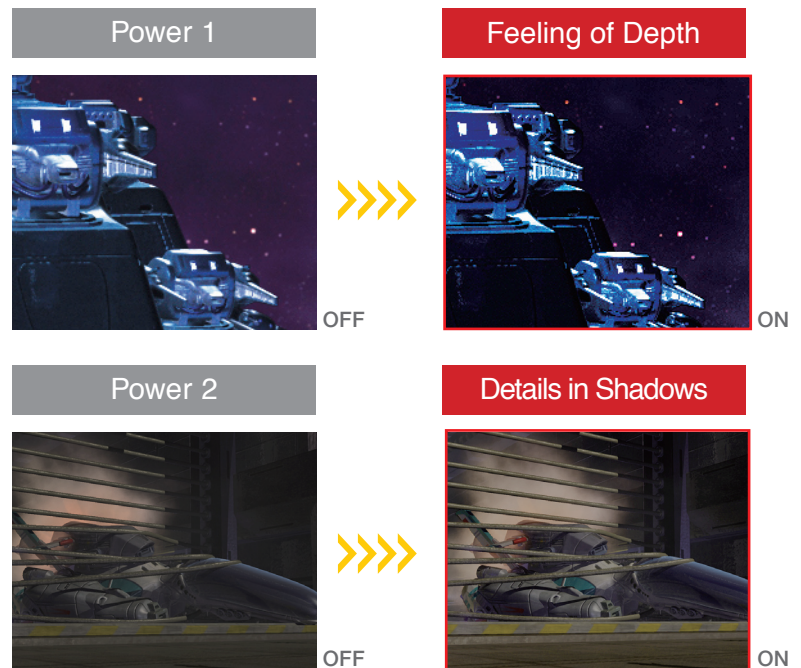
[Power Resolution]

Power Resolution makes the details in both low and high resolution games and animated images look clearer and sharper. It comes with three adjustment stages.

[Power Gamma]

This feature applies a gamma curve to games and other animated images that amplifies the feeling of contrast to make them look more three dimensional. Power Gamma has two settings – “Power 1” which sharpens midtones and “Power 2” which increases contrast in the low tones for better visibility in dark areas.

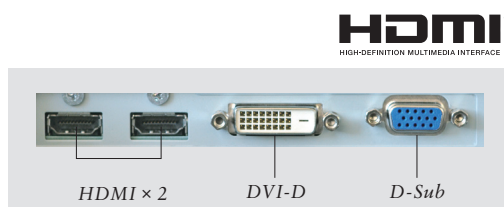
Power Gamma



© 2007 IREM SOFTWARE ENGINEERING INC. All rights reserved.

HDMI, DVI-D, and D-Sub Inputs

Dual HDMI inputs are included for full HD connectivity with audio-visual devices such as gaming consoles, Blu-ray disc players, and TV tuners. DVI-D and D-Sub inputs allow connection to PCs with digital and analog graphics boards respectively.



Full HD Resolution

The 1920 x 1080 native resolution displays pixel-by-pixel all the content of full high-definition video sources such as Blu-ray discs and many of today's games without any black bars across the top and bottom of the screen.

Cinema Mode for Enjoying Videos

This preset mode brings out the detail in dark tones so dimly lit scenes are displayed with greater clarity.

10,000:1 Dynamic Contrast Ratio

A ContrastEnhancer adjusts the brightness of images to their ideal levels in real time. The resulting dynamic contrast ratio of 10,000:1 ensures the monitor consistently produces deep blacks and vivid colors with moving images.



Input Lag of Less than One Frame

The input lag or the difference between the time a signal is input into the monitor and then shown on the screen is less than one frame. This is approximately 1/60th of a second, so gamers see the action as it happens and react immediately.

Overdrive Circuit for Faster Response Time

An overdrive circuit is included to reduce gray-to-gray response time to 7 ms and ensure that moving images look clean and sharp with a minimum ghosting. This function has Standard and Enhanced modes. It can also be turned off if preferred.



Digital Photos

Simple Color Matching with EIZO EasyPIX

The EIZO EasyPIX color matching tool is ideal for digital SLR camera users looking to match colors between their monitors and photo prints. With the EIZO EasyPIX software you can match the monitor's color and brightness with that of the photo paper and then create a monitor profile with the bundled EX1 color sensor. The profile can be shared with image retouching software to ensure accurate results when printing. (Mac OS and HDMI inputs not supported)



Non-Glare Screen with Wide Viewing Angles

The FORIS FS2331 uses a VA (vertical alignment) panel with wide 178° viewing angles. Contrast and hue changes are minimal even when viewing the screen at an angle. The screen is non-glare to minimize reflection and resulting eye fatigue.



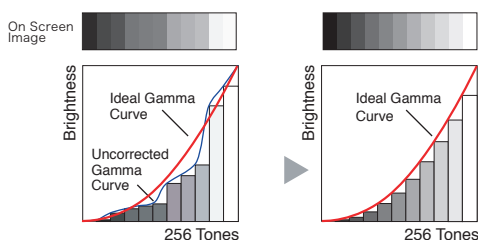
Panel with narrow viewing angles



Panel with wide viewing angles

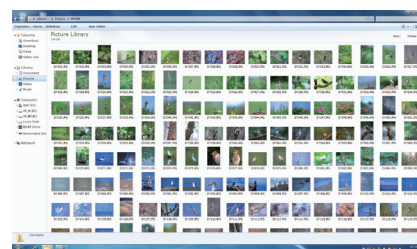
10-Bit Gamma Correction

This technology ensures smooth, accurate color tones by converting the 8-bit RGB (red, green, blue) signal data from the PC to 10-bits, assigning the ideal gamma values, then returning the data to 8-bit format for display.



23" High Resolution Screen

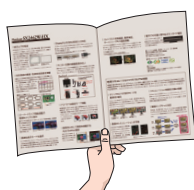
This 2-megapixel, 23-inch screen offers ample space for displaying your thumbnails and then expanding them for viewing or retouching.



Digital Documents and eBooks

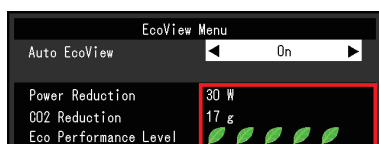
Paper Mode That Simulates Printed Paper

Paper mode makes reading digital documents and ebooks more comfortable by adjusting the monitor's brightness, contrast ratio, and color temperature to simulate the look of printed paper.



Energy Efficiency Gauge

A gauge called "EcoView Index" indicates the level of power savings and equivalent amount of CO₂ reduction compared to using the monitor without Auto EcoView activated.



Optimized Brightness

An ambient brightness sensor called "Auto EcoView" that detects changes in the ambient brightness and signals the backlight to adjust the screen brightness accordingly so it is never too dark or too bright.



Sensor



HDCP Support

Both the DVI-D and HDMI connectors support high-bandwidth digital content protection (HDCP) for viewing of content from HDCP-equipped devices.

Preset Modes for Optimum Viewing

In addition to Game, Cinema, and Paper modes, User modes for user-determined settings as well as an sRGB mode are also included. Toggling between modes is done manually with the remote control or automatically by assigning a mode to a particular application with the bundled ScreenManager Pro for LCD software (Windows 7 and Vista compatible).

New Cabinet Design

The FORIS FS2331 debuts a new cabinet design that features a long, narrow imprint that runs from side to side across the lower front bezel. The imprint is for affixing a red, blue, or gray color stripe so you can personalize the appearance of the monitor. The color stripes are included.



Remote Control

A card-style remote control which offers full control of the OSD menu plus one-touch access to screen size, volume, and PC/HDMI input selection.

Internal Speakers and Headphone Jack

Dual internal 0.5-watt speakers give the FS2331 audio capability. A headphone jack is conveniently positioned on the side of the monitor.



EIZO Screen Slicer

This is a free software utility that lets you more effectively use your screen through partitioning. Simply drop your windows into configurable partitioned areas and they will be aligned instantly.



Customer Assurance

A five-year warranty offers a long service life, and compliance with leading industry standards such as TCO Display 5.1 and TUV Ergonomics ensures a better working environment.



EIZO NANA O CORPORATION

153 Shimokashiwano, Hakusan, Ishikawa 924-8566 Japan
Phone +81-76-277-6792 Fax: +81-76-277-6793
www.eizo.com

FORIS® FS2331	PC Input	AV Input
Panel Size	23" / 58 cm (584 mm diagonal)	
Active Display Size (H × V)	509.8 × 286.7 mm	
Panel Type	VA (with overdrive circuit)	
Viewing Angles (H, V)	178°, 178° (at contrast ratio of 10:1)	
Brightness	300 cd/m²	
Contrast	3000:1 (10000:1 with ContrastEnhancer)	
Response Time (Typical)	Gray-to-gray: 7 ms, black-white-black: 25 ms	
Native Resolution	1920 × 1080 (16: 9 aspect ratio)	
Pixel Pitch	0.2655 × 0.2655 mm	
Display Colors	16.77 million from a palette of 1.06 billion	
Look-Up Table	10 bits per color	
Cabinet Color	Black	
Dot Clock	Analog: 148.5 MHz, Digital: 148.5 MHz	
Analog Scanning Frequency (H, V)	31 – 81 kHz, 55 – 76 Hz	–
Digital Scanning Frequency (H, V)	31 – 68 kHz, 59 – 61 Hz (VGA Text 69 – 71 Hz)	15 – 68 kHz, 49 – 68 Hz
Video Input Terminals	D-Sub mini 15 pin, DVI-D 24 pin (with HDCP), HDMI × 2	HDMI × 2
Audio Input Terminals	3.5 mm stereo jack × 1, HDMI × 2	HDMI × 2
Audio Output Terminals	3.5 mm headphone jack	
Speakers:	0.5 W + 0.5 W (stereo)	
Plug & Play	VESA DDC 2B	
Power Requirements	AC 100 – 120 V / 200 – 240 V, 50 / 60 Hz	
Power Consumption	24 W (typical) 45 W (maximum)	
Power Save Mode	Less than 1 W	
Tilt / Swivel / Pivot	20° Up, 5° Down / – / –	
Dimensions (W × H × D)	With Stand 549 × 403 × 212 mm Without Stand 549 × 393 × 58 mm	
Net Weight	With Stand 6.9 kg Without Stand 6.1 kg	
Preset Modes	User1, User2, sRGB, Paper, Game, Cinema, Auto Fine Contrast¹	
EcoView Settings	Auto EcoView, EcoView Index	
Screen Adjustment	Clock, Phase, Position, Resolution, Screen (Auto), Range (Auto)	–
Screen Size	Normal, Enlarge, Full Screen	Auto, Normal, Letterbox, Enlarge, Full Screen, OverScan On / Off
Color Adjustment	Brightness, Black Level, Contrast, Gamma, Temperature, Saturation, Hue, Gain, ContrastEnhancer, Power Resolution, Overdrive, Reset	
Power Management	Power Save (VESA DPM and DVI DMPM), Off Timer	
Sound	Volume, Mute, Sound Level, Power Save, Source (HDMI)	
Other Settings	Product Information (name, serial number, resolution, operating time, etc.), OSD Menu Settings, HDMI Color Space, Adjustment Lock, DDC/CI Lock, Languages (English, French, German, Italian, Japanese, Simplified and Traditional Chinese, Spanish, Swedish), Power Indicator, Reset	
Certifications and Standards	TCO Displays 5.1, EPEAT Silver (US), TÜV/Ergonomics (including ISO 9241-307), TÜV/GS, c-Tick, CE, CB, cTUVus, FCC-B, Canadian ICES-003-B, TÜV/S, VCCI-B, EPA Energy Star, RoHS, WEEE	
Supplied Accessories	AC power cord, signal cable (DVI-D – DVI-D), audio cable, EIZO LCD Utility Disk (PDF user's manual, ScreenManager Pro for LCD [DDC/CI]², EIZO ScreenSlicer software), color sheets (red, blue, and gray), setup guide, 4 screws for mount option, remote control with battery, warranty card	
Warranty	Five Years³	

¹ Bundled ScreenManager Pro for LCD is necessary to activate Auto Fine Contrast. Support for those functions varies with the graphics board used. ² ScreenManager Pro for LCD is compatible with the Microsoft Windows 7 and Vista operating systems only. ³ The usage time is limited to 30,000 hours or less, and the warranty period of the LCD panel is limited to three years from the date of purchase. With current LCD technology, a panel may contain a limited number of missing or flickering pixels.

© 2010 Eizo Nanao Corporation

All product names are trademarks or registered trademarks of their respective companies. FORIS and EIZO are registered trademarks of Eizo Nanao Corporation. Specifications are subject to change without notice.