

# iProtection™

from OtterBox is superior protection for your favorite Apple devices. iProtection is the result of innovative engineering and precision design for ideal Form, Fit and Function.





# iProtection<sup>TM</sup> *for the*

- 6<sup>th</sup> grader in class
- Business executive on the move
- Surveyor in the field
- Firefighter navigating to a building
- Mom and kids using apps

**OfferBox delivers superior protection for your new iPad, no matter how you use it.**

# iProtection™ *for* The new iPad & iPad 2

## FIT

Precision design of the Defender Series case ensures all features and functions of the iPad are accessible with the case on. In addition this case is compatible with both the new iPad and new iPad 2.

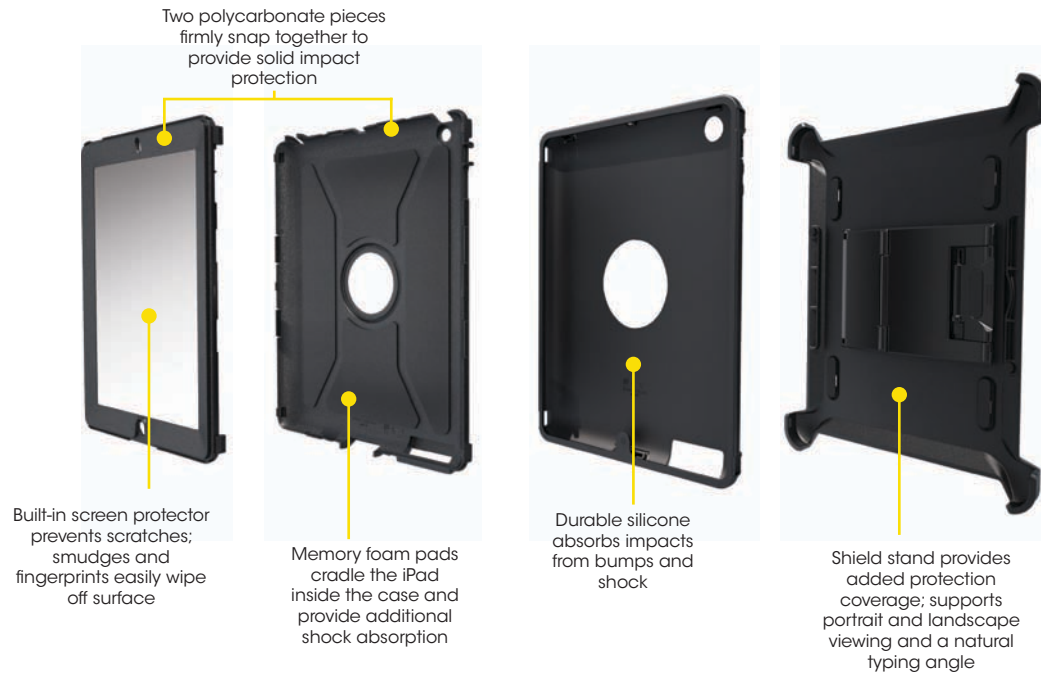




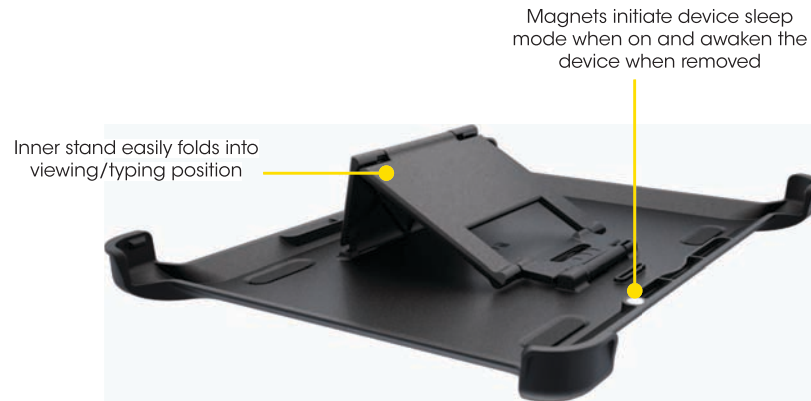
# iProtection™ *for the* iPad 2&3

## FORM

At OtterBox our design begins with the device. Thorough discovery of the iPad and its functions are taken into account as we develop and refine our design. From the initial concept designs our industrial designers create to the final product drawings our engineers deliver, every aspect of the iPad is given careful consideration to ensure we create the most usable and protective solution possible.



# iProtection™ *for the* iPad 2&3



## FUNCTION

This case ensures ideal usability and portability of the iPad with the case on as well as integrates additional features that enhance the user experience.

©2012 Otter Products, LLC. All rights reserved.  
The OtterBox name and OtterBox trademarks are the property of Otter Products, LLC, registered in the U.S. and other countries. All other trademarks are the property of their respective owners.







DEFENDER SERIES *for the*

## New iPad & iPad 2

APL2-IPADD-20-E4OTR

### FEATURES

- **SCREEN PROTECTION:** Built-in screen protector prevents scratches; smudges and fingerprints easily wipe off surface
- **OUTER LAYER:** Durable silicone absorbs bump and shock
- **INNER LAYER:** Two polycarbonate pieces firmly snap together to provide solid impact protection
- Memory foam pads cradle the iPad inside the case and provide additional shock absorption
- **SHIELD STAND:** Supports viewing in portrait or landscape mode and accommodates a natural typing angle
- Integrated shield stand fits on both front and back of case

# iProtection™

### FORM

The design for our latest Defender Series case for the iPad is inspired by the device itself. Our engineers and industrial designers carefully considered all aspects of the device to accommodate the ergonomics and natural use of every feature and function. Styling and textures in combination with high quality materials create a solid protective solution.

### FIT

Our three-layer protective case employs an improved design that is easy to install and remove. The two polycarbonate pieces firmly snap together and the silicone installs easily over the hard shell fitting snugly in place. The built-in screen protector fits flush and flat on top of the screen to prevent scratches and wear on the touch screen. In addition, smudges and fingerprints are easy to clean off. Port covers protect from dust and debris while allowing easy access for jacks and connectors.

### FUNCTION

All features and functions of the iPad are accessible and work with the case on. The shield stand acts as an additional protective cover when on the front or back and does double duty as a stand. The stand has a natural typing angle for getting work done and accommodates viewing videos and apps in either landscape or portrait mode. Magnets in the shield initiate device sleep mode when on and awaken the device when removed, conserving battery power. Highly portable, this case provides superior protection when and where you need it.

### SPECS

**COLOURS:**  Black

**WEIGHT:** 15.84 oz / 449.06 g

**DIMENSIONS:** 9.90 in x 7.73 in x 0.72 in  
260.55 mm x 205.13 mm x 18.36 mm

