

EVGA Z170 Classified 4-Way

PART NUMBER: **151-SS-E179** **INTRO**



The EVGA Z170 Classified is engineered from the ground up to be the best overclocking motherboard on the planet. Featuring a next generation Intel Z170 Express Chipset with DDR4 3200MHz+ memory support, this motherboard is built to perform. Two SATA Express ports, up to eight SATA 6G ports, two USB 3.1 and two M.2 ports provide robust storage and I/O options, and with support for NVIDIA 4-Way SLI® Technology, you can pair up to four NVIDIA graphics cards for insane gaming performance.

KEY SPECS

- Supports Intel® Core™ 6th Generation Processor Family for LGA Socket 1151
- 300% Increased Gold Content
- Intel® Z170 Chipset
- Enthusiast Layout Supporting 4-Way SLI®, 3-Way SLI®, and 2-Way SLI®
- 4 DIMM Dual-Channel DDR4 3200MHz+ (64GB)
- PCI Express® 3.0 Ready
- 2 USB 2.0 ports (two rear panel)
- 8 USB 3.0 Ports (six rear panel, two onboard)
- 2 USB 3.1 Ports (two onboard)
- 1 HDMI Port
- 1 DisplayPort 1.2 Port
- 8 SATA 6G Ports (2 SATA Express)
- 2 M.2 (Key M/E) Up to 32Gbps (M)
- 2 Intel Gigabit Ethernet Port (10/100/1000)
- Creative Sound Core3D Quad-Core Audio Processor + Optical
- E-ATX Form Factor

DESIGN DETAILS

Supported CPUs - Intel® 6th Generation Socket 1151 Processors
Socket Type - LGA 1151
PCH - Intel® Z170

DIMM QTY - 4 DIMM Slots
Memory Type - DDR4 Up to 3200MHz+
Memory Capacity - 64GB

SATA 6Gb/s Ports/Controller - 6 / Intel® Z170 PCH - 2 / Marvell 9220
SATA Express - 2 / Intel® Z170 PCH (Shared with SATA)
RAID Support - RAID 0, 1, 5 and 10

USB 2.0 Ports/Controller - 2 / Intel® Z170 PCH
USB 3.0 Ports/Controller - 8 / Intel® Z170 PCH
USB 3.1 Ports/Controller - 2 / ASMedia ASM1142

Network Speed - 10/1000/1000
Network Ports/Controller - 2 / Intel® i219/i210 Gigabit Ethernet PHY

Audio - 6 Channel HD
Audio Controller - Creative Sound Core3D Quad-Core Audio Processor + Optical

PCI-E Slot Arrangement - 1x16, 2x16, 3x8, 4x8
PCI-E x16 Mechanical Slots - 5
PCI-E x4 Mechanical Slots - 1
M.2 / 1x Key M (Up to 32Gbps)
M.2 / 1x Key E

BIOS Type - Full UEFI with mouse/keyboard control
Software - EVGA E-LEET X Tuning Utility

Fan Headers - 7 / 4-Pin PWM

DIMENSIONS

- Width: 10.375in - 263.5mm
- Length: 12in - 304.8mm
- Form Factor: E-ATX

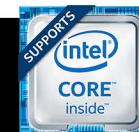
ACCESSORIES

- EVGA Driver Installation Disc
- Rear Case I/O Panel
- Rear Case I/O Cover
- 1 Probe-It Cable
- 2 SATA 6G Data Cables
- 2-way SLI Bridge
- 2 Port USB 3.0 Bracket
- Manual



PRODUCT WARRANTY

This product is covered under EVGA's 3 year warranty which covers parts and labor. Further warranty extension is available upon registration within 30 days of purchase. For more details please visit www.evga.com/warranty



EVGA Z170 Classified 4-Way

PART NUMBER: **151-SS-E179** **FEATURES**

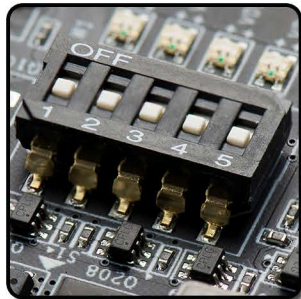
FULL UEFI GUI BIOS INTERFACE

Focused on functionality



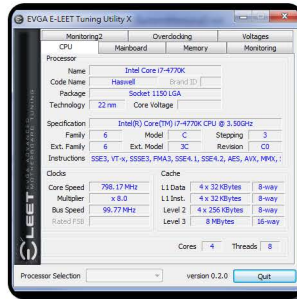
PCI-E DISABLE SWITCH

Quickly and easily troubleshoot!



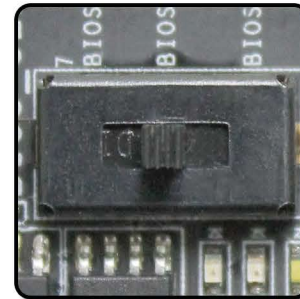
E-LEET X TUNING UTILITY

Adjust your overclocking in 0.5.



TRIPLE BIOS SUPPORT

Use 3 separate profiles!



RIGHT ANGLED 24 PIN

Improved cable management



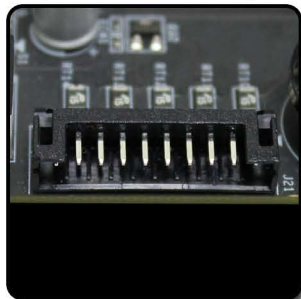
HIGHER GOLD CONTENT

Lower inductance, better power delivery!



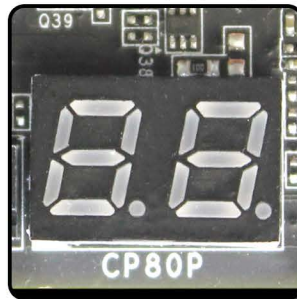
EZ VOLTAGE READ POINTS

Easy read dedicated read points



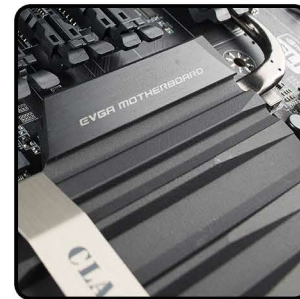
ONBOARD CPU TEMP MONITOR

Monitor CPU temps quickly & easily



PASSIVE CHIPSET HEATSINK

No fans, lower noise, longer lifespan



DUAL 8 PIN CPU POWER

Optional 8 pin provides up to 600w



8 PHASE PWM

Cleanest variable power switching



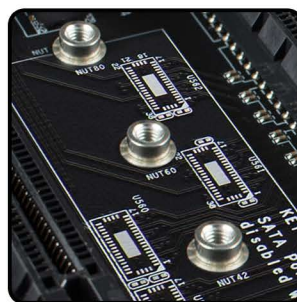
8 LAYER PCB

Improved overclock stability and PCB cooling



M.2 SLOT

Next generation form factor



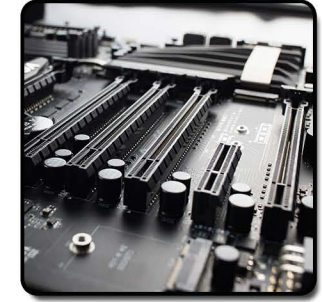
ONBOARD POWER

Reset and CMOS Reset Buttons – Power at your fingertips



4-WAY SLI

Engineered to handle the most demanding video loads



PRODUCT WARRANTY

This product is covered under EVGA's 3 year warranty which covers parts and labor. Further warranty extension is available upon registration within 30 days of purchase. For more details please visit www.evga.com/warranty

