

msi®



MOTHERBOARD

B150M PRO-DH



PRO Series

Making your life easier is our business

The PRO Series motherboards fit in any PC. Quality you can trust with top performance and clever business solutions are key aspects of these motherboards. Make your life easier and boost your business with the super stable, reliable and long-lasting PRO Series motherboards.



a
Built
for
Small
Business



SBA SUPPORT



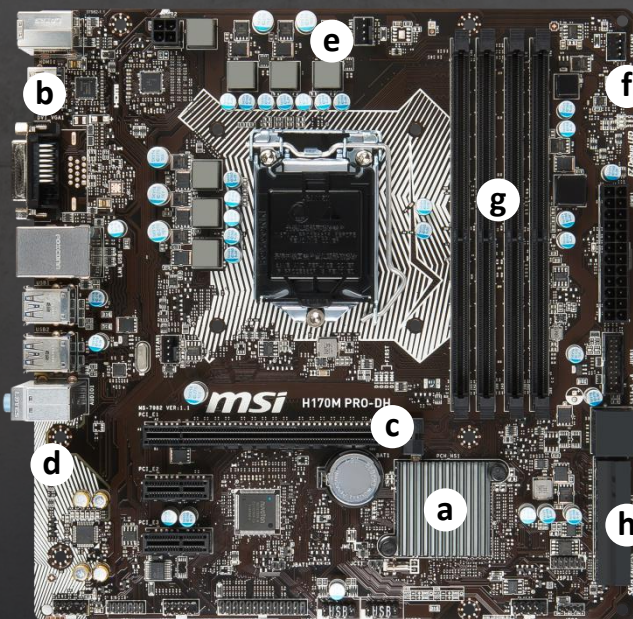
MILITARY CLASS 4

e
Power
&
Stability

b
4096
X
2160



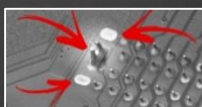
4K SUPPORT



EZ DEBUG LED

f
Easy
Trouble-
shooting

c
35%
Stronger



VGA ARMOR



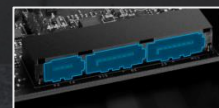
DDR4 BOOST

g
Speed-
up
Memory

d
8-channel
7.1 HD



AUDIO BOOST



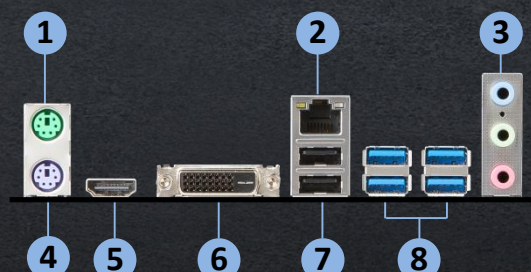
SATA EXPRESS

h
High-
Speed
Storage

SPECIFICATIONS

CPU support	6th Gen Intel® Core™ / Pentium® / Celeron® processors
CPU socket	LGA 1151
Chipset	Intel® B150 Chipset
Graphics interface	1 * PCI-E 3.0 x16
Display interface	HDMI, DVI – Requires Processor Graphics
Memory support	4 DIMMs, Dual Channel DDR4-2133 MHz
Expansion slots	2 * PCI-E x1
SATA	6 * SATA 6 Gb/s (2 x ports from SATA Express port)
USB	6 * USB 3.1 Gen1, 6 * USB 2.0
LAN	Realtek® Gigabit Ethernet
Audio	8-channel(7.1) HD Audio with Audio Boost
Others	COM / LPT pin header

I/O OVERVIEW



- | | |
|---------------------|-----------------------|
| 1. Mouse port | 5. HDMI port |
| 2. LAN port | 6. DVI port |
| 3. Audio connectors | 7. USB 2.0 ports |
| 4. Keyboard port | 8. USB 3.1 Gen1 ports |