

Product Brief

- A-Style : Home Cloud
- Supports 4th Gen Intel® Core™ i7 / i5 / i3 / Xeon® / Pentium® / Celeron® in LGA1150 Package
- Supports Intel® Small Business Advantage 2.0
- All Solid Capacitor design
- Supports Dual Channel DDR3 1600
- 1 x PCIe 3.0 x16, 1 PCIe 2.0 x16
- Supports AMD Quad CrossFireX, CrossFireX
- Multi-VGA Output Options : DVI-D, D-Sub, HDMI
- Qualcomm Atheros Gigabit LAN
- 7.1 CH HD Audio with Content Protection (Realtek ALC892 Audio Codec)
- 4 x SATA3, 2 x SATA2, 4 x USB 3.0, 8 x USB 2.0
- Supports A-Tuning, XFast 555, Easy Driver Installer, FAN-Tastic Tuning, USB Key



Detail Specification

Platform	<ul style="list-style-type: none"> - Micro ATX Form Factor - All Solid Capacitor design
A-Style	- Home Cloud
CPU	<ul style="list-style-type: none"> - Supports 4th Generation Intel® Core™ i7 / i5 / i3 / Xeon® / Pentium® / Celeron® in LGA1150 Package - 4 Power Phase Design - Supports Intel® Turbo Boost 2.0 Technology
Chipset	<ul style="list-style-type: none"> - Intel® B85 - Supports Intel® Small Business Advantage 2.0
Memory	<ul style="list-style-type: none"> - Dual Channel DDR3 memory technology - 2 x DDR3 DIMM slots - Supports DDR3 1600/1333/1066 non-ECC, un-buffered memory - Max. capacity of system memory: 16GB - Supports Intel® Extreme Memory Profile (XMP) 1.3 / 1.2
Expansion Slot	<ul style="list-style-type: none"> - 1 x PCI Express 3.0 x16 slot (PCIe1: x16 mode) - 1 x PCI Express 2.0 x16 slot (PCIe2: x4 mode) - 2 x PCI slots - Supports AMD Quad CrossFireX™ and CrossFireX™
Graphics	<ul style="list-style-type: none"> * Intel® HD Graphics Built-in Visuals and the VGA outputs can be supported only with processors which are GPU integrated. - Supports Intel® HD Graphics Built-in Visuals : Intel® Quick Sync Video with AVC, MVC (S3D) and MPEG-2 Full HW Encode1, Intel® InTru™ 3D, Intel® Clear Video HD Technology, Intel® Insider™, Intel® HD Graphics 4400/4600 - Pixel Shader 5.0, DirectX 11.1 - Max. shared memory 1792MB - Three VGA Output options: D-Sub, DVI-D and HDMI - Supports Triple Monitors - Supports HDMI Technology with max. resolution up to 1920x1200 @ 60Hz - Supports DVI-D with max. resolution up to 1920x1200 @ 60Hz - Supports D-Sub with max. resolution up to 1920x1200 @ 60Hz - Supports Auto Lip Sync, Deep Color (12bpc), xvYCC and HBR (High Bit Rate Audio) with HDMI (Compliant HDMI monitor is required) - Supports HDCP function with DVI-D and HDMI ports - Supports Full HD 1080p Blu-ray (BD) playback with DVI-D and HDMI ports
Audio	<ul style="list-style-type: none"> - 7.1 CH HD Audio with Content Protection (Realtek ALC892 Audio Codec) - Premium Blu-ray audio support
LAN	<ul style="list-style-type: none"> - PCIe x1 Gigabit LAN 10/100/1000 Mb/s - Qualcomm® Atheros® AR8171 - Supports Qualcomm® Atheros® Security Wake On Internet Technology - Supports Wake-On-LAN - Supports Energy Efficient Ethernet 802.3az - Supports PXE
Rear Panel I/O	<ul style="list-style-type: none"> - 1 x PS/2 Mouse/Keyboard Port - 1 x D-Sub Port - 1 x DVI-D Port - 1 x HDMI Port - 1 x Optical SPDIF Out Port - 4 x USB 2.0 Ports - 2 x USB 3.0 Ports - 1 x RJ-45 LAN Port with LED (ACT/LINK LED and SPEED LED) - HD Audio Jack: Rear Speaker / Central / Bass / Line in / Front Speaker / Microphone

Storage	<ul style="list-style-type: none"> - 4 x SATA3 6.0 Gb/s connectors, support NCQ, AHCI and Hot Plug - 2 x SATA2 3.0 Gb/s connectors, support NCQ, AHCI and Hot Plug
Connector	<ul style="list-style-type: none"> - 1 x IR header - 1 x Print Port header - 1 x COM port header - 1 x Chassis Intrusion header - 1 x TPM header - 2 x CPU Fan connectors (1 x 4-pin, 1 x 3-pin) - 2 x Chassis Fan connectors (1 x 4-pin, 1 x 3-pin) - 1 x Power Fan connector (3-pin) - 1 x 24 pin ATX power connector - 1 x 8 pin 12V power connector - 1 x Front panel audio connector - 1 x SPDIF Out connector - 2 x USB 2.0 headers (support 4 USB 2.0 ports) - 1 x USB 3.0 header (supports 2 USB 3.0 ports)
BIOS Feature	<ul style="list-style-type: none"> - 64Mb AMI UEFI Legal BIOS with Multilingual GUI support - ACPI 1.1 Compliance Wake Up Events - SMBIOS 2.3.1 Support - CPU, DRAM, PCH 1.05V, PCH 1.5V Voltage Multi-adjustment
Support CD	<ul style="list-style-type: none"> - Drivers, Utilities, AntiVirus Software (Trial Version), CyberLink MediaEspresso 6.5 Trial, Google Chrome Browser and Toolbar, Start8
Unique Feature	<ul style="list-style-type: none"> - ASRock A-Tuning - ASRock Instant Flash - ASRock APP Charger - ASRock XFast USB - ASRock XFast LAN - ASRock XFast RAM - ASRock Crashless BIOS - ASRock OMG (Online Management Guard) - ASRock Internet Flash - ASRock System Browser - ASRock UEFI Tech Service - ASRock Dehumidifier Function - ASRock Easy Driver Installer - ASRock Interactive UEFI - ASRock Fast Boot - ASRock Restart to UEFI - ASRock On/Off Play Technology - ASRock USB Key - ASRock FAN-Tastic Tuning - Hybrid Booster: <ul style="list-style-type: none"> - ASRock U-COP - Boot Failure Guard (B.F.G.) - Good Night LED
Hardware Monitor	<ul style="list-style-type: none"> - CPU/Chassis Temperature Sensing - CPU/Chassis/Power Fan Tachometer - CPU/Chassis Quiet Fan (Allow Chassis Fan Speed Auto-Adjust by CPU Temperature) - CPU/Chassis Fan Multi-Speed Control - CASE OPEN detection - Voltage Monitoring: +12V, +5V, +3.3V, CPU Vcore
OS	- Microsoft® Windows® 8 / 8 64-bit / 7 / 7 64-bit compliant
Certifications	<ul style="list-style-type: none"> - FCC, CE, WHQL - ErP/EuP Ready (ErP/EuP ready power supply is required)
Accessories	<ul style="list-style-type: none"> - Quick Installation Guide, Support CD, I/O Shield - 2 x SATA Data Cables




Home Cloud



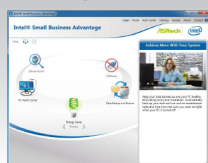
QUALCOMM
POWERED

This motherboard supports Security Wake On Internet Technology with the onboard Qualcomm® Atheros® LAN, so you can connect with your PC from anywhere in the world. You will be able to power your PC on or turn it off, monitor and take control of it remotely with another smartphone, tablet or computer.



Supports
Intel® Small
Business
Advantage

Intel® Small Business Advantage 2.0



Intel® SBA 2.0 with Next Generation Intel® Core® is a unique, out-of-the-box solution that delivers:

- An easy-to-use interface
- Relevant security and productivity applications
- Free and easy customization

SECURITY



Software Monitor



Data Backup
& Restore



USB Blocker

PRODUCTIVITY



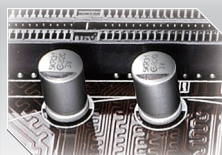
PC Health Center



Energy Saver



All Solid Caps



All the capacitors on this board are built with 100% all solid capacitors. With these solid caps, ASRock motherboards are allowed to perform more stably and ensure longer lifetime.



A-Tuning



A-Tuning is ASRock's multi purpose software suite with a new interface, more new features and improved utilities, including XFast RAM, OC Tweaker and a whole lot more.



Triple Monitor

This motherboard supports Triple-Monitor. You may choose up to three display interfaces to connect monitors and use them simultaneously.



XFast 555

ASRock's unique XFast 555 technology (XFast RAM, XFast LAN and XFast USB) allows users to experience 5 times performance boost in terms of system performance, LAN speed and USB transfer speed.



FAN-Tastic
Tuning

Configure different fan speeds for respective temperatures using the graph. The fans will automatically shift to the next speed level when the assigned temperature is met.



Easy Driver
Installer

For users that don't have an optical disk drive to install the drivers from our support CD, Easy Driver Installer is a handy tool in the UEFI that installs the LAN driver to your system via an USB storage device, then downloads and installs the other required drivers automatically.



USB Key

Just plug in the USB Key and let your computer log in to windows automatically without having to type your username and password!



UEFI Tech Service

Contact ASRock Tech Service by sending a support request form from the UEFI setup utility if you are having trouble with your PC.



With ASRock's exclusive Fast Boot technology, it takes less than 1.5 seconds* to logon to Windows 8 from a cold boot. No more waiting! The speedy boot will completely change your user experience and behavior.

*The boot time may vary with a different configuration.



ASRock "Restart to UEFI" technology is designed for those requiring frequent UEFI access. It allows users to easily enter the UEFI SETUP automatically when turning on the PC next time.



ASRock OMG technology allows you to establish an internet curfew or restrict internet access at specified times. Administrators are able to schedule the starting and ending hours of internet access granted to other users.



Users may prevent motherboard damages due to dampness by enabling "Dehumidifier Function". When enabling Dehumidifier Function, the computer will power on automatically to dehumidify the system after entering S4/S5 state.